

Gender and Racial Composition of
Connecticut State Boards
and Commissions

2011 Report



Compiled by the Office of
Secretary of the State
Denise W. Merrill

May 14, 2012

TABLE OF CONTENTS

Statistical Report

Introduction.....	1
Reporting Requirements and Data Collection.....	2
Biennial Change in Aggregate Appointed Membership.....	6
Biennial Change in Appointed Membership on Individual Reporting Bodies.....	10
Historical Change 1999-2011.....	13

Appendix A

Connecticut General Statutes, Section 4-9b

Appendix B

Table of Reporting State Boards, Commissions, Committees and Councils

Appendix C

Table of Reporting Board and Commission Enabling Authorities and Contact Information

Appendix D

Table of Boards and Commissions Reported as Inactive, Defunct, Not yet Organized, or Status Unknown

Appendix E

Table of Non- or Late-Responding Boards and Commissions

INTRODUCTION

Since 1993, Connecticut law has required state boards, commissions, committees and councils having at least one member appointed by the Governor, or by a member of the General Assembly, to biennially submit reports to the Secretary of the State documenting the gender and racial composition of their membership. Appointing authorities for the reporting state boards and commissions, including agency heads and other non-legislative and non-gubernatorial appointing authorities, are required by the same law to consider gender and race when making their appointments. Additionally, the law requires the Secretary of the State to receive and maintain the biennially-filed gender and racial composition reports as public records. Appendix A of this report reproduces the full text of the law, *Connecticut General Statutes* Section 4-9b.

In order to facilitate public access to the data provided in the biennial gender and racial composition reports of state boards and commissions, the Secretary of the State voluntarily publishes a statistical report of that data every two years. This year's report presents data submitted in 2011 by 175 state boards, commissions, committees and councils. Appendix B provides a transcription of the data submitted.

The functions performed by the 175 reporting boards and commissions vary greatly. Some direct professional and occupational licensing programs, others have quasi-judicial responsibilities, and some provide advisory assistance to state agencies. Readers can review the law that creates a board or commission—its enabling authority—for more information on the purpose of a particular entity. Appendix C provides a table of the reporting boards and commissions and their enabling authorities.

REPORTING REQUIREMENTS AND DATA COLLECTION

Statutory Reporting Requirements

Connecticut General Statutes (CGS) Section 4-9b requires appointing authorities to consider gender and race when making their appointments to certain state appointive bodies. Specifically, appointing authorities are to “make a good faith effort to ensure that, to the extent possible, the membership, except the ex-officio membership, of each state appointive board, commission, committee and council having members appointed by the Governor or appointed by members of the General Assembly is qualified and closely reflects the gender and racial diversity of the state.”¹ The chairpersons of those boards and commissions must biennially file a report with the Secretary of the State documenting their appointive membership’s gender and racial composition. By law, the Secretary of the State must receive and maintain the gender and racial composition biennial reports as public records.

In order to facilitate public access to the data provided by the reporting boards and commissions, the Secretary voluntarily publishes a statistical summary of the data every two years.

Data Collection

In August 2011, in order to help state boards and commissions comply with the reporting requirement of CGS Section 4-9b, the Office of the Secretary of the State mailed report forms to 250 entities identified as likely candidates for filing gender and racial composition reports.² Reminder forms were mailed in November 2011 to entities that had not responded.

As of December 31, 2011, reports or responses were filed for 210 appointive bodies—a return rate of 84%.³ Thirty-five (35) of the 210 were reported as one of the following: (a) no longer in existence; (b) not required to file; (c) not yet organized; (d) operating

¹ See Appendix A for the full text of CGS Section 4-9b.

² Boards and commissions having at least one membership position directly appointed by the governor or by a member of the legislature are required to file gender and racial composition reports under CGS Section 4-9b. The Office of the Secretary of the State conducts a search of state statutes and executive orders in order to identify boards and commissions that appear to be required to file.

³ Reports for three additional entities were received after the December 31, 2011 cutoff date. Including those three entities in the calculation raises the response rate to 85%. See Appendix E for the names of late-reporting and non-responding boards and commissions.

status not known; or (e) inactive and having vacancies in all appointed membership positions.⁴ An additional board reported the gender and racial composition of its members was unknown.⁵ Because no appointed member data was available for these thirty-six (36) entities, they are *not* included in the statistics presented in this report.

Appendix E lists forty (40) late or non-responding boards and commissions. Three (3) entities reported late, after the the December 31, 2011 cutoff date and no response was received from thirty-seven (37) appointive bodies. It is likely that some of the thirty-seven (37) are no longer in existence, even though they are still listed in the *Connecticut General Statutes* or in gubernatorial executive orders. Authorizing statutes and executive orders for boards and commissions that have ceased to actually function may be candidates for repeal.

Data Presentation

This report transcribes data submitted by 175 state boards, commissions, committees and councils that were reported as being required to file a gender and racial composition report and as either 1) active and having at least one appointed member, or 2) inactive but currently having at least one appointed member. The responses are listed in Appendix B.

Sixty-six (66) of the 175 boards and commissions reported having ex-officio members. Ex-officio members are excluded from the diversity requirements of CGS Section 4-9b. Therefore, they are not included in the data presented in this report.⁶

⁴ See Appendix D for a list of the boards and commissions that were reported as one of the following: no longer in existence (defunct); not yet organized; unknown operating status; or inactive with vacancies for all appointed membership positions.

⁵ The State Board of Examiners of Environmental Professionals report indicates the gender and racial composition of the board's membership is unknown.

⁶ Because CGS Section 4-9b excludes ex-officio membership positions from its diversity provisions, those positions are *not* included in the statistics presented in this report. The statistics presented in this report pertain only to the *appointed* membership of the reporting state boards and commissions. There were 247 ex-officio members (or their designees) serving on the reporting bodies. The term "ex-officio" means "by virtue of office." Ex-officio members are not specifically appointed to a board or commission by the governor, a member of the legislature or some other appointing authority. Ex-officio members serve on a board or commission by virtue of some other office they hold (such as the office of "state agency commissioner"). Ex-officio members can be either voting or non-voting members of a board or commission. They are often able to designate a person to serve full or part-time in their place. For reporting purposes, designees of ex-officio members serving more than 50% of the time in place of the designating ex-officio member were reported as the ex-officio member.

Excluding vacancies and alternates, the individual appointed membership size of the 175 appointive bodies ranged from one to thirty-nine (39). The aggregate appointed membership numbered 1,806. There were 344 vacancies reported on the 175 appointive bodies.

Data Limitations

It should be noted that the data presented in this report provides a time-sensitive view of the gender and racial composition of the appointed membership for the reporting boards and commissions—a “snapshot” of their composition at the time their reports were filed. Resignations, new appointments, or the filling of vacancies may have since changed the appointed membership composition of some of the listed boards and commissions.

It should also be noted that it is not possible to definitively characterize the appointment practices of any particular appointing authority based upon the information collected by law and transcribed in this report. While the governor and legislative leadership are appointing authorities for some of the positions on the listed boards and commissions, many of the reporting bodies have members appointed by state agency commissioners or other non-legislative and non-gubernatorial appointing authorities.⁷

Finally, it should be noted that while comparing the reported data to U.S. Census Bureau data can provide useful information about diversity in the appointed membership of the reporting state boards and commissions, CGS Section 4-9b does not require the appointed membership of state boards and commissions to exactly mirror Connecticut population statistics. In addition, U.S. Census reporting categories do not exactly correspond to Connecticut’s affirmative action reporting categories, which impairs direct comparisons.⁸

Terminology

Race/Sex Categories

CGS Section 4-9b requires state boards and commissions to submit data using the “race/sex” group terminology prescribed by the affirmative action regulations of the

⁷ While the leadership of the General Assembly makes most *legislative* appointments to the reporting boards and commissions, legislative committee chairs also make some.

Connecticut Commission on Human Rights and Opportunities (CHRO). Therefore, the figures, tables and narrative in this report use that terminology as well.

The eight CHRO affirmative action race/sex group categories are as follows: white male, white female, black male, black female, Hispanic male, Hispanic female, other male and other female.

Given that the term “Hispanic” does not refer to race but to ethnicity and is intended to refer to all persons of Hispanic/Latino origin regardless of race, the eight terms should be understood to mean the following: black male (not Hispanic), black female (not Hispanic), Hispanic male (of any race), Hispanic female (of any race), white male (not Hispanic), white female, (not Hispanic), other male (not Hispanic), and other female (not Hispanic).

U.S. Census Data Comparison

The tables and figures in this report compare the data provided by state boards and commissions to population statistics for the *nearest corresponding* U.S. Census categories. Therefore, the CHRO reporting category “white (not Hispanic)” is compared to the U.S. Census category “White alone (Not of Hispanic or Latino Origin).” The reporting category “Black (not Hispanic)” is compared to the Census category “Black or African American alone (Not of Hispanic or Latino Origin).” The reporting category “Hispanic (of any race)” is compared to the Census category, “Total (Hispanic or Latino Origin).” And the reporting category “other (not Hispanic)” is compared to the aggregate of the following Census categories for persons not of Hispanic or Latino origin: “American Indian and Alaskan Native alone,” “Asian alone,” “Native Hawaiian and Other Pacific Islander alone,” and persons of two or more races.

⁸ See “Terminology” below for more information on the subject of reporting categories.

BIENNIAL CHANGE IN AGGREGATE APPOINTED MEMBERSHIP

Comparing the composition of the aggregate appointed membership of the 175 state boards and commissions to state population statistics provides one way to assess diversity.⁹ The figures and narrative below provide some of those comparisons.

Gender

Representation of women in the aggregate appointed membership of the reporting state boards and commissions increased 4.2% (1.6 percentage points) from 2009 to 2011.¹⁰ In 2011, women comprised 40.1% of the aggregate appointed membership of the reporting state boards and commissions compared to 38.5% in 2009.

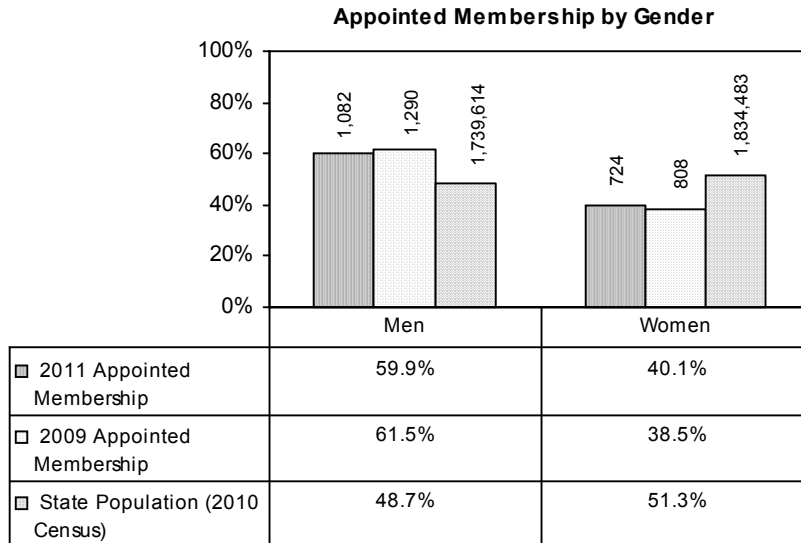
However, representation of women in the aggregate appointed membership for 2011 was 11.2 percentage points below the percentage of women in the state's general population; in other words, 22% less than expected based upon the representation of women in the state's general population.¹¹ See Figure 1 below.

⁹ While comparisons to state population statistics are useful for reviewing diversity on the reporting state boards and commissions, it should be noted that CGS Section 4-9b does not require the aggregate appointed membership of the boards and commissions to exactly mirror those statistics.

¹⁰ The percent increase in representation of women between 2009 and 2011 is calculated as follows: $((2011 \text{ percentage representation value} / 2009 \text{ percentage representation value}) - 1) * 100$. See Meyer, Philip, *Precision Journalism: A Reporter's Introduction to Social Science Methods*, Rowman & Littlefield, 2002, p. 41.

¹¹ Population statistics for 2010 used throughout this report are taken from the following tables at U.S. Census Bureau, American Fact Finder, <http://factfinder2.census.gov>, downloaded 1/30/2012, for geography Connecticut: DP-1, Profile of General Population and Housing Characteristics; PCT12I, Sex by Age (White Alone, Not Hispanic or Latino); P12H, Sex by Age (Hispanic or Latino); PCT12K, Sex by Age (American Indian and Alaska Native Alone, Not Hispanic or Latino); PCT12L, Sex by Age (Asian Alone, Not Hispanic or Latino); PCT12M, Sex by Age (Native Hawaiian and Other Pacific Islander Alone, Not Hispanic or Latino); PCT12N, Sex by Age (Some Other Race Alone, Not Hispanic or Latino); PCT12O, Sex by Age (Two or More Races, Not Hispanic or Latino).

Figure 1



Race/Ethnicity

Between 2009 and 2011, all non-white racial/ethnic groups saw an increase in their percentage representation in the aggregate appointed membership of the 175 reporting bodies. Whites continued to be overrepresented, as in previous reporting periods, but their representation decreased 3.6 percentage points (4%) from 2009.

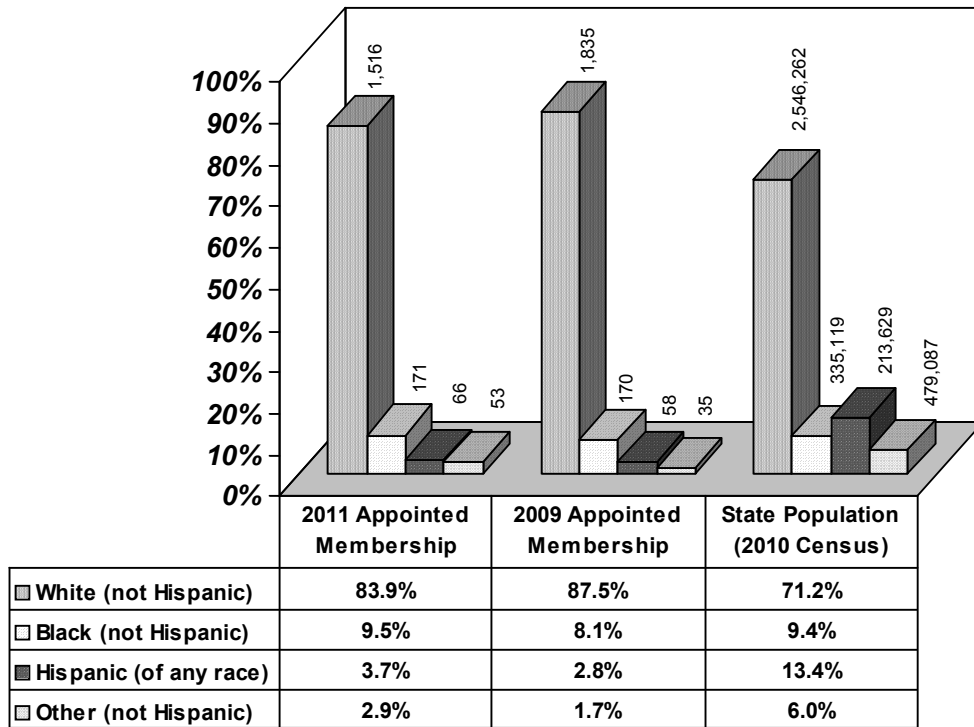
Percentage representation of African-Americans increased 17.3% (1.4 percentage points) between 2009 and 2011, percentage representation of Latinos increased 32.1% (0.9 percentage points), and percentage representation of other racial/ethnic minority groups increased 70% (1.2 percentage points).

In 2011, for the first time since 1993 when gender and racial composition data for appointed state boards and commissions was first reported to the Secretary of the State, representation of African-Americans reached parity with their representation in the state’s general population. However, other minority race groups and Latinos remained significantly underrepresented in comparison to their numbers in the state’s general population. See Figure 2 below.¹²

¹² CGS Section 4-9b requires state boards and commissions to biennially report their gender and racial composition to the secretary of the state using “race/sex” group terminology as defined in the affirmative action regulations of Connecticut’s Commission on Human Rights and Opportunities (CHRO). The

Figure 2

Appointed Membership by Race and Hispanic Ethnicity



Race/Ethnicity by Gender

In 2011, non-Latino white men remained the most significantly overrepresented group in the aggregate appointed membership of the 175 reporting state boards and commissions; although, their percentage representation in the aggregate appointed membership did decline in 2011, as it did in 2009.

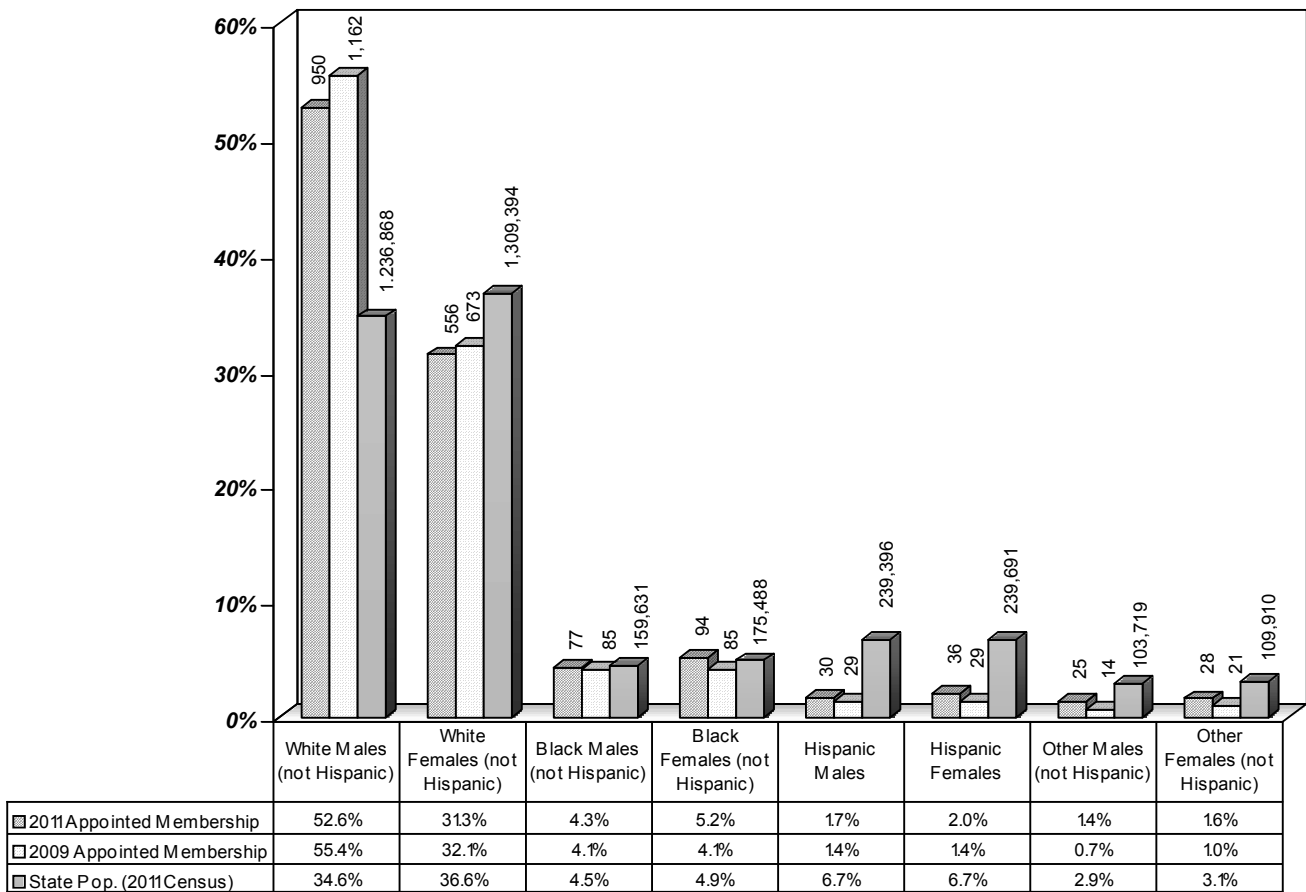
Percentage representation of all minority race/sex groups, except non-Hispanic white females, increased in the aggregate appointed membership of the reporting state boards and commissions between 2009 and 2011. Nevertheless, all minority race/sex groups, except non-Hispanic black females, remained underrepresented in the aggregate

required CHRO reporting categories are: white male, white female, black male, black female, Hispanic male, Hispanic female, other male and other female. The term “Hispanic” refers to ethnicity and includes all persons of Hispanic or Latino origin regardless of race. The term “other” includes persons of Asian, Native American, Native Alaskan, Native Hawaiian and Other Pacific Islander origin, persons of more than one race, and all other individuals who do not self-identify as being white, black or of Hispanic origin.

appointed membership in comparison to their representation in Connecticut's general population. See Figure 3.

Figure 3

Appointed Membership by Race/Sex Category



BIENNIAL CHANGE ON INDIVIDUAL REPORTING BODIES

Reviewing the composition of the appointed membership for each of the 175 state boards and commissions that reported in 2011 is another way to assess diversity and change. The tables and narrative below provide a general review of change between 2009 and 2011.

Gender Composition

Despite their greater than 50% share in the state's general population, women comprised less than 50% of appointees on most (68.6%) of the reporting state boards and commissions in 2011. In contrast, men, who comprise less than 50% of the state's general population, accounted for 50% or more of appointees on 74.3% of the reporting bodies.

In 2011, women were not represented at all in the appointed membership of 13.7% of reporting state boards and commissions; a 1.6 percentage point (10%) decrease from the 2009 figure of 15.3%. See Table 1.

Table 1

GENDER Representation on Individual Reporting Bodies			
2011 APPOINTED MEMBERSHIP			
	Number of Reporting Bodies N=175		
	Not Represented	Represented at any level	Represented at 50% or more
MEN	7 (4.0%)	168 (96.0%)	130 (74.3%)
WOMEN	24 (13.7%)	151 (86.3%)	55 (31.4%)
2009 APPOINTED MEMBERSHIP			
	Number of Reporting Bodies N=209		
	Not Represented	Represented at any level	Represented at 50% or more
MEN	8 (3.8%)	201 (96.2%)	154 (73.7%)
WOMEN	32 (15.3%)	177 (84.7%)	62 (29.7%)

Racial and Ethnic Composition

Between 2009 and 2011, there was a small increase in the percentage of reporting bodies having appointees from a single race/ethnicity group (54.3% in 2011 versus 53.1%

in 2009, which corresponds to a 2.3% increase (1.2 percentage points)). There was also a small increase in the percentage of boards and commissions having appointees from three or four race/ethnicity groups. Almost seventeen percent (16.6%) had appointees from three or four race/ethnicity groups in 2011; in 2009 that percentage was 15.3%. This represents an 8.5% increase from 2009 to 2011 (1.3 percentage points). See Table 2.

In 2011, there was a 1.5% decrease (0.8 percentage points) in the percentage of state boards and commissions having only white appointees. Ninety (90) out of 175 reporting bodies (51.4%) had only white appointed members in 2011. In 2009, 109 out of 209 reporting bodies (52.2%) had only white appointed members.

Table 2

RACE and HISPANIC ETHNICITY CATEGORY Representation on Individual Reporting Bodies				
	2011 APPOINTED MEMBERSHIP		2009 APPOINTED MEMBERSHIP	
Number of Race/Ethnicity Categories Represented	Number of Reporting Bodies N=175	Percent	Number of Reporting Bodies N=209	Percent
1	95	54.3%	111	53.1%
2	49	28.0%	66	31.6%
3	25	14.3%	29	13.9%
4	4	2.3%	3	1.4%

In 2011, as in 2009, virtually all of the boards and commissions (97%) reported having at least one non-Hispanic white appointee. There was a 5.5% increase (2 percentage points) in the percentage of boards and commissions having at least one non-Hispanic black appointee; no change in the percentage having at least one Hispanic appointee of any race; and a 20% increase (2 percentage points) in the percentage having at least one non-Hispanic appointee from a racial group classified as Other. See Table 3.

Table 3

NUMBER OF REPORTING BODIES WITH AT LEAST ONE APPOINTED MEMBER FROM SPECIFIC RACE/ETHNICITY CATEGORIES				
	White (Not Hispanic)	Black (Not Hispanic)	Hispanic (Of any race)	Other (Not Hispanic)
2011 N=175	170 (97%)	66 (38%)	33 (19%)	21 (12%)
2009 N=209	205 (98%)	75 (36%)	39 (19%)	20 (10%)

Race/Ethnicity/Gender Category Composition

The percentage of state boards and commissions having appointees from at least four of the eight race/ethnicity/gender categories increased 15% (2.5 percentage points) between 2009 and 2011. However, in 2011, more than eighty percent (81.1%) of reporting boards and commissions had appointees from three or fewer of the reporting categories. That figure is 2.7 percentage points (3%) less than the 2009 figure of 83.8%. See Table 4.

Table 4

RACE/SEX Group Diversity on Individual Reporting Bodies				
	2011 Appointed Membership		2009 Appointed Membership	
Number of Race/Sex Groups Represented	Number of Reporting Bodies N=175	Percent	Number of Reporting Bodies N=209	Percent
1	24	13.7%	29	13.9%
2	78	44.6%	94	45.0%
3	40	22.8%	52	24.9%
4	18	10.3%	19	9.1%
5	10	5.7%	11	5.3%
6	3	1.7%	2	1.0%
7	1	0.6%	2	1.0%
8	1	0.6%	0	—

In 2011, there was little change in the distribution of appointed members from the eight race/sex categories on the reporting boards and commissions. Non-Hispanic black men and women, non-Hispanic white women, Hispanic women, and non-Hispanic Other men served on a larger percentage of state boards and commissions in 2011 than in 2009. In 2011, non-Hispanic white males served on a smaller percentage of boards and commissions than in 2009. There was no change from 2009 to 2011 in the percentage of state boards and commissions having at least one Hispanic male appointee or one non-Hispanic Other female appointee. See Table 5.

Table 5

NUMBER OF REPORTING BODIES WITH AT LEAST ONE APPOINTED MEMBER FROM SPECIFIC RACE/ETHNICITY CATEGORIES BY GENDER					
		White (Not Hispanic)	Black (Not Hispanic)	Hispanic (Of any race)	Other (Not Hispanic)
2011 N=175	MALES	161 (92%)	40 (23%)	18 (10%)	17 (10%)
	FEMALES	144 (82%)	47 (27%)	21 (12%)	9 (5%)
2009 N=209	MALES	194 (93%)	46 (22%)	21 (10%)	13 (6%)
	FEMALES	169 (81%)	53 (25%)	24 (11%)	10 (5%)

HISTORICAL CHANGE 1999-2011

Change in Aggregate Appointed Membership

It is possible to review the gender and racial composition of the aggregate appointed membership of reporting state boards and commissions from 1999 to 2011.¹³ This data is presented in Tables 6, 7 and 8 below.¹⁴

One consistent trend since 1999 is the very slowly decreasing percentage of males—most particularly non-Hispanic white males—in the aggregate appointed membership, and the increasing percentage of female appointees. See Tables 6 and 8.

In 2011, percentage representation of non-Hispanic black men and women in the aggregate appointed membership was higher than for any prior reporting period since 1999. See Tables 7 and 8.

In 2011, percentage representation of Hispanic men and women in the aggregate appointed membership reached their highest levels since 1999, although Latinos remained underrepresented compared to their numbers in the state's general population. See Tables 7 and 8.

In 2011, percentage representation of non-Hispanic white females decreased from higher levels in 2005, 2007 and 2009. See Table 8.

Table 6

Gender Composition of Aggregate Appointed Membership, 1999-2011		
Year	Men	Women
1999	65.7%	34.3%
2001	65.5%	34.5%
2003	64.7%	35.5%
2005	63.4%	36.6%
2007	63.0%	37.0%
2009	61.5%	38.5%
2011	59.9%	40.1%

¹³ It is only possible to make historical comparisons of the composition of the appointed membership from 1999 forward. Although gender and racial composition data for state boards and commissions has been filed with the Secretary of the State since 1993, report forms used prior to 1999 did not distinguish between appointed and ex-officio membership positions. Ex-officio membership positions are not included in the diversity provision of CGS Section 4-9b.

¹⁴ Statistics for 1999 through 2011 are taken from the gender and racial composition reports submitted to the Office of the Secretary of the State by state boards and commissions.

Table 7

Racial/Ethnic Composition of Aggregate Appointed Membership, 1999-2011				
Year	WHITE (Not Hispanic)	BLACK (Not Hispanic)	HISPANIC (Of any race)	OTHER (Not Hispanic)
1999	89.4%	6.6%	2.7%	1.3%
2001	88.6%	7.1%	2.9%	1.4%
2003	88.4%	7.2%	3.1%	1.3%
2005	89.0%	6.7%	3.1%	1.2%
2007	88.3%	7.4%	3.2%	1.1%
2009	87.5%	8.1%	2.8%	1.7%
2011	83.9%	9.5%	3.7%	2.9%

Table 8

Racial, Ethnic, and Gender Category Composition of Aggregate Appointed Membership, 1999-2011								
	Racial/Ethnic/Gender Group							
Reporting Year	White Males (not Hispanic)	White Females (not Hispanic)	Black Males (not Hispanic)	Black Females (not Hispanic)	Hispanic Males (of any race)	Hispanic Females (of any race)	Other Males (not Hispanic)	Other Females (not Hispanic)
1999	60.2%	29.2%	3.1%	3.5%	1.4%	1.3%	1.1%	0.3%
2001	59.3%	29.3%	3.9%	3.2%	1.4%	1.5%	1.0%	0.4%
2003	58.7%	29.7%	3.6%	3.6%	1.4%	1.7%	0.9%	0.4%
2005	57.5%	31.5%	3.4%	3.3%	1.5%	1.7%	1.0%	0.2%
2007	56.8%	31.5%	4.0%	3.4%	1.6%	1.5%	0.6%	0.5%
2009	55.4%	32.1%	4.1%	4.1%	1.4%	1.4%	0.7%	1.0%
2011	52.6%	31.3%	4.3%	5.2%	1.7%	2.0%	1.4%	1.6%

Between 1999 and 2011, proportional underrepresentation of women and African American appointees on the reporting appointive bodies decreased. Women were underrepresented in the aggregate appointed membership by 33.4% in 1999 and by 21.8% in 2011. For African Americans, proportional underrepresentation decreased from 23.3% to overrepresentation by 1.1% during the same time period.

Between 1999 and 2011, representation of persons of Hispanic origin and persons belonging to groups categorized as Other (not Hispanic), did not keep pace with their general population growth. Proportional underrepresentation of Hispanic/Latino appointees increased from 68.2% in 1999 to 72.4% in 2011. Proportional underrepresentation of Hispanic/Latino appointees was higher in the 2009 reporting period at 76.7%. Proportional underrepresentation increased slightly for Other (not Hispanic) appointees: from 50% underrepresentation in 1999 to 51.7% in 2011. Proportional underrepresentation of persons belonging to groups categorized as Other was higher in the 2009 and 2005 reporting periods.

Between 1999 and 2011, proportional overrepresentation of non-Hispanic whites increased from 11.5% to 17.8%, and proportional overrepresentation of men decreased from 35.5% to 23.0%. See Table 9.

Table 9

Relative Disparity Between Representation in Aggregate Appointed Membership of State Boards and Commissions and State Population, 1999-2011¹⁵												
	1999			2005			2009			2011		
	% Mem.	% Pop.	Disparity (%)*	% Mem.	% Pop.	Disparity (%)*	% Mem.	% Pop.	Disparity (%)*	% Mem.	% Pop.	Disparity (%)*
Gender												
Women	34.3	51.5	-33.4	36.6	51.5	-28.9	38.5	51.2	-24.8	40.1	51.3	-21.8
Men	65.7	48.5	+35.5	63.4	48.5	+30.7	61.5	48.8	+26.0	59.9	48.7	+23.0
Race												
White (not Hispanic)	89.4	80.2	+11.5	89.0	75.8	+17.4	87.5	73.8	+18.6	83.9	71.2	+17.8
Black (not Hispanic)	6.6	8.6	-23.3	6.7	9.1	-26.4	8.1	9.3	-12.9	9.5	9.4	+1.1
Hispanic (of any race)	2.7	8.5	-68.2	3.1	10.6	-70.8	2.8	12.0	-76.7	3.7	13.4	-72.4
Other (not Hispanic)	1.3	2.6	-50.0	1.2	4.4	-72.7	1.7	4.8	-64.6	2.9	6.0	-51.7

* In the percentage disparity column, a plus sign (+) indicates overrepresentation in the aggregate appointed membership and a minus sign (-) indicates underrepresentation in comparison to the group's representation in the state's general population.

Change in Individual Appointed Memberships

Additional information regarding diversity and change between 1999 and 2011 in the appointed membership on individual reporting state boards and commissions is presented in Tables 10, 11 and 12 below.

¹⁵Relative disparity measures the percentage by which the number of appointees from a given category falls short of their numbers in the state's general population. It is calculated by subtracting the the percentage of appointees in the aggregate membership from their percentage representation in the state's general population, dividing the difference by their percentage representation in the state's general population, and multiplying by 100. Population statistics for 1999 column are compiled from Table ST-99-43, Population Estimates for States by Age, Race, Sex and Hispanic Origin: July 1, 1999. Population Estimates Program, Population Division, U.S. Census Bureau. Internet Release Date: August 30, 2000. Population statistics for the 2005 column are 2004 estimates taken from Table SC-EST2004-03-09-Table 3: Annual Estimates of the Population by Sex, Race and Hispanic or Latino Origin for Connecticut: April 1, 2000 to July 1, 2004. Source: Population Division, U.S. Census Bureau. Release Date: August 11, 2005. Population statistics for 2009 column are 2008 estimates taken from "Table 3: Annual Estimates of the Population by

Representation of Women

Since 1999 there has been some increase in representation of women on individual reporting bodies. Between 1999 and 2011, the percentage of reporting bodies having no female appointees decreased 23% (4.1 percentage points). During the same time period, the percentage of reporting boards and commissions having at least one female appointee increased 5% (4.1 percentage points). Also between 1999 and 2011, there was an 87% increase (14.6 percentage points) in the percentage of reporting bodies having women represented in the appointed membership in numbers equal to or greater than their percentage representation in the state's general population. See Table 10.

Table 10

Change in Female Representation in Appointed Membership on Individual Reporting Bodies 1999 - 2011			
Year (N = Number of reporting bodies)	Number / Percent of Reporting Bodies		
	No female appointed members	At least one female appointed member	50% or more of appointed membership female
1999 N = 202	36 (17.8%)	166 (82.2 %)	34 (16.8%)
2001 N = 204	38 (18.6%)	166 (81.4%)	53 (26.0%)
2003 N = 201	41 (20.4%)	160 (79.6%)	54 (26.9%)
2005 N = 189	28 (14.8%)	161 (85.2%)	58 (30.7%)
2007 N = 207	28 (13.5%)	179 (86.5 %)	67 (32.5%)
2009 N=209	32 (15.3%)	177 (84.7%)	62 (29.7%)
2011 N=175	24 (13.7%)	151 (86.3%)	55 (31.4%)

Race/Ethnicity Group Diversity

In 2011, as in 1999, the appointed memberships of more than half of the reporting state boards and commissions were comprised *entirely* of non-Hispanic whites. Between 1999 and 2011, there was a 9.8% decrease (5.6 percentage points) in reporting bodies having only non-Latino white appointees; 51.4% of reporting boards and commissions in 2011 versus 57.0% in 1999. Between 2003, when the percentage of reporting bodies

Sex, Race and Hispanic or Latino Origin for Connecticut: April 1, 2000 to July 1, 2008 (SC-EST2008-03-09).” Source: Population Division, U.S. Census Bureau. Release Date: May 14, 2009.

having only non-Latino white appointees reached a height of 60.2%, and 2011, there was a 14.6% decrease (8.8 percentage points). See Table 11.

Table 11

Representation of Non-Hispanic Whites in Appointed Membership on Individual Reporting Bodies 1999 - 2011		
Year (N = Number of reporting bodies)	Reporting bodies having only non-Hispanic white appointed members	Percentage
1999 N=202	115	57.0%
2001 N=204	120	58.5%
2003 N=201	121	60.2%
2005 N=189	106	56.1%
2007 N=207	113	54.6%
2009 N=209	109	52.1%
2011 N=175	90	51.4%

There has been little change since 1999 in the distribution of appointed members from minority race/ethnicity groups on the reporting state boards and commissions, although all were serving on a larger percentage of boards and commissions in 2011 than in 1999.

For each reporting period between 1999 and 2011 almost all boards and commissions indicated having at least one non-Hispanic white appointee. During the same period, an average of 35% of reporting state boards and commissions indicated having at least one non-Hispanic black appointee; an average of 18% indicated having at least one Latino appointee; and an average of 8% had at least one appointed member from a minority group categorized as Other. Representation of non-Latino Others doubled between 1999 and 2011, from 6% of reporting boards and commissions to 12%. See Table 12 below.

Table 12

Number of Reporting Bodies Having At Least One Appointed Member from the Specified Race/Ethnic Group 1999-2011				
Year (N = Number of reporting bodies)	White (not Hispanic)	Black (not Hispanic)	Hispanic (of any race)	Other (not Hispanic)
1999 N=202	199 (99%)	70 (35%)	31 (15%)	13 (6%)
2001 N=204	202 (99%)	70 (34%)	32 (16%)	15 (7%)
2003 N=201	199 (99%)	63 (31%)	33 (16%)	15 (7%)
2005 N=189	187 (99%)	64 (34%)	41 (22%)	16 (8%)
2007 N=207	203 (98%)	72 (35%)	44 (21%)	15 (7%)
2009 N=209	205 (98%)	75 (36%)	39 (19%)	20 (10%)
2011 N=175	170 (97%)	66 (38%)	33 (19%)	21 (12%)

APPENDIX A

From the *Connecticut General Statutes*, Revised to January 1, 2011

Sec. 4-9b. Membership of boards, commissions, committees and councils: Qualifications, gender and racial diversity required considerations. Report. Right of action. (a) Appointing authorities, in cooperation with one another, shall make a good faith effort to ensure that, to the extent possible, the membership, except the ex-officio membership, of each state appointive board, commission, committee and council having members appointed by the Governor or appointed by members of the General Assembly is qualified and closely reflects the gender and racial diversity of the state. If there are multiple appointing authorities for a board, commission, committee or council, the appointing authorities shall inform each other of their appointees or planned appointees in order to facilitate compliance with this section.

(b) The executive officer or chairperson of each state appointive board, commission, committee and council having members appointed by the Governor or appointed by members of the General Assembly, except committees whose membership consists solely of members of the General Assembly, shall report in writing to the Secretary of the State on or after September first, but not later than October 1, 1993, and biennially thereafter, (1) the number of members of such body and (2) the composition of the body according to the term "race/sex", as defined in the regulations of the Commission on Human Rights and Opportunities. Such report shall not include the names of the individual members of the board, commission, committee or council. The Secretary of the State shall receive and maintain the reports submitted pursuant to this subsection as public records.

(c) No provision of this section shall (1) prohibit an individual from completing a term as a member of a state appointive board, commission, committee or council being served on July 2, 1993, or (2) create a private right of action.

APPENDIX B

Table of Reporting State Boards, Commissions, Committees and Councils

Gender and Racial Composition of Appointed Membership of Connecticut State Boards, Commissions, Committees and Councils

Compiled by the Office of Secretary of the State Denise Merrill

2011 BIENNIAL REPORT DATA													
BOARD, COMMISSION, COMMITTEE OR COUNCIL	TOTAL MEMBERS		Vacancies	Appointed Members GENDER		Appointed Members RACE							
	Ex-Officio or Designees	Appointed Members		Men	Women	WHITE		BLACK		HISPANIC		OTHER	
						Men	Women	Men	Women	Men	Women	Men	Women
Child Day Care Council	5	16	1	1	15	0	11	0	3	1	1	0	0
Child Support Guidelines, Commission for	7	3	1	1	2	1	1	0	1	0	0	0	0
Children and Families, State Advisory Council on	2	11	8	0	11	0	9	0	2	0	0	0	0
Children, Commission on	9	16	5	9	7	6	7	2	0	0	0	1	0
Children's Behavioral Health Advisory Committee	0	27	3	7	20	6	17	1	3	0	0	0	0
Children's Trust Fund Council	3	10	5	2	8	2	8	0	0	0	0	0	0
Chiropractic Examiners, State Board of	0	6	0	3	3	2	2	1	1	0	0	0	0
Mediation and Arbitration, Board of	0	6	0	6	0	6	0	0	0	0	0	0	0
Medical Examining Board, Connecticut	0	14	1	12	2	12	2	0	0	0	0	0	0
Medicolegal Investigations, Commission on	1	7	1	5	2	5	2	0	0	0	0	0	0
Mental Health and Addiction Services, Board of	8	10	0	10	0	9	0	0	0	1	0	0	0
Metro North New Haven Rail Commuter Council	3	14	2	11	3	11	3	0	0	0	0	0	0
Metropolitan District for the County of Hartford, Board of Commissioners	0	29	0	27	2	21	1	4	1	2	0	0	0
Milk Regulation Board	2	7	0	5	2	5	2	0	0	0	0	0	0
Mobile Manufactured Home Advisory Council	0	13	2	9	4	9	4	0	0	0	0	0	0
Municipal Finance Advisory Commission	0	7	0	5	2	5	2	0	0	0	0	0	0
National and Community Service, Connecticut Commission on	1	17	7	6	11	3	9	2	1	0	1	1	0
Native American Heritage Advisory Council	0	9	2	1	8	0	0	0	0	0	0	1	8
Natural Heritage, Open Space and Watershed Land Acquisition Review Board	0	16	0	11	5	11	5	0	0	0	0	0	0
Clean Energy Finance and Investment Authority Board of Directors	3	7	1	5	2	4	1	0	1	0	0	1	0

Gender and Racial Composition of Appointed Membership of Connecticut State Boards, Commissions, Committees and Councils

Compiled by the Office of Secretary of the State Denise Merrill

2011 BIENNIAL REPORT DATA													
BOARD, COMMISSION, COMMITTEE OR COUNCIL	TOTAL MEMBERS		Vacancies	Appointed Members GENDER		Appointed Members RACE							
	Ex-Officio or Designees	Appointed Members		Men	Women	WHITE		BLACK		HISPANIC		OTHER	
						Men	Women	Men	Women	Men	Women	Men	Women
Electrologists, Board of Examiners of	0	5	0	0	5	0	5	0	0	0	0	0	0
Elevator Installation, Repair and Maintenance Board	0	5	3	5	0	5	0	0	0	0	0	0	0
Embalmers and Funeral Directors, Connecticut Board of Examiners of	0	4	1	4	0	4	0	0	0	0	0	0	0
Emergency Medical Services Advisory Board	0	39	2	28	11	27	10	1	1	0	0	0	0
Emergency Response Commission, Connecticut	9	7	2	6	1	6	1	0	0	0	0	0	0
Employee Misclassification Advisory Board	0	2	4	2	0	2	0	0	0	0	0	0	0
Employees' Review Board	0	5	2	4	1	4	1	0	0	0	0	0	0
Employment and Training Commission, Connecticut	4	24	0	19	5	16	4	3	0	0	1	0	0
Employment Security Board of Review	0	1	1	0	1	0	1	0	0	0	0	0	0
Employment Security Division Advisory Board to the Labor Commissioner	0	9	0	7	2	7	1	0	1	0	0	0	0
Environmental Quality, Council on	0	8	1	4	4	4	4	0	0	0	0	0	0
Equine Advisory Council	1	7	0	0	7	0	7	0	0	0	0	0	0
Ethics Advisory Board, Citizen's	0	8	1	7	1	6	1	1	0	0	0	0	0
Family Support Council	0	20	7	3	17	3	15	0	2	0	0	0	0
Farm Wine Development Council	1	8	0	8	0	8	0	0	0	0	0	0	0
Farmland Preservation Advisory Board	0	11	1	9	2	9	2	0	0	0	0	0	0
Finance Advisory Committee	0	9	0	5	4	5	1	0	3	0	0	0	0
Fire Marshal Training Council	0	9	3	7	2	7	2	0	0	0	0	0	0
Fire Prevention and Control, Commission on	2	10	2	9	1	9	1	0	0	0	0	0	0
Fire Protection Sprinkler Systems Board	0	8	1	8	0	7	0	0	0	1	0	0	0
Firearms Permit Examiners, Board of	0	6	1	6	0	6	0	0	0	0	0	0	0
Five Mile River Commission	0	4	0	4	0	4	0	0	0	0	0	0	0
Food Policy Council, Connecticut	0	11	0	5	6	4	6	1	0	0	0	0	0

Gender and Racial Composition of Appointed Membership of Connecticut State Boards, Commissions, Committees and Councils

Compiled by the Office of Secretary of the State Denise Merrill

2011 BIENNIAL REPORT DATA													
BOARD, COMMISSION, COMMITTEE OR COUNCIL	TOTAL MEMBERS		Vacancies	Appointed Members GENDER		Appointed Members RACE							
	Ex-Officio or Designees	Appointed Members		Men	Women	WHITE		BLACK		HISPANIC		OTHER	
						Men	Women	Men	Women	Men	Women	Men	Women
Forest Practices Advisory Board	1	8	1	7	1	7	1	0	0	0	0	0	0
Freedom of Information Commission	0	5	4	3	2	3	2	0	0	0	0	0	0
Gaming Policy Board	1	4	1	3	1	3	1	0	0	0	0	0	0
Greater Hartford Flood Commission	0	5	2	5	0	4	0	1	0	0	0	0	0
Greenways Council, Connecticut	2	9	0	5	4	5	3	0	0	0	1	0	0
Gubernatorial Incapacity, Council on	5	4	0	2	2	2	2	0	0	0	0	0	0
Head Start Funds Advisory Committee	3	5	4	1	4	1	4	0	0	0	0	0	0
Health Equity, Commission on	1	28	2	12	16	2	6	8	6	1	3	1	1
Highway Work Zone Safety Advisory Council	6	3	0	1	2	1	2	0	0	0	0	0	0
Historic Preservation Council	0	3	8	3	0	3	0	0	0	0	0	0	0
Historic Preservation, Connecticut Trust for, Board of Trustees	0	33	0	21	12	18	9	1	3	1	0	1	0
Historical Records Advisory Board, State	0	19	0	11	8	10	8	1	0	0	0	0	0
Homeopathic Medical Examining Board, Connecticut	0	4	1	3	1	2	1	0	0	0	0	1	0
Housing Matters, Citizens Advisory Council for	0	10	36	9	1	7	0	2	1	0	0	0	0
Human Rights & Opportunities, Commission on	0	7	2	3	4	3	1	0	2	0	1	0	0
Independent Living Council, Inc, Connecticut State	7	9	7	4	5	4	5	0	0	0	0	0	0
Insurance and Risk Management Board, State	1	10	1	5	5	5	4	0	1	0	0	0	0
Intergovernmental Relations, Connecticut Advisory Commission on	8	10	6	7	3	7	3	0	0	0	0	0	0
Invasive Plants Council	0	9	0	8	1	8	1	0	0	0	0	0	0
Investment Advisory Council	1	11	0	9	2	9	2	0	0	0	0	0	0
Judicial Review Council	0	11	4	8	3	6	2	2	1	0	0	0	0
Judicial Selection Commission	0	12	0	10	2	8	2	2	0	0	0	0	0

Gender and Racial Composition of Appointed Membership of Connecticut State Boards, Commissions, Committees and Councils

Compiled by the Office of Secretary of the State Denise Merrill

2011 BIENNIAL REPORT DATA													
BOARD, COMMISSION, COMMITTEE OR COUNCIL	TOTAL MEMBERS		Vacancies	Appointed Members GENDER		Appointed Members RACE							
	Ex-Officio or Designees	Appointed Members		Men	Women	WHITE		BLACK		HISPANIC		OTHER	
						Men	Women	Men	Women	Men	Women	Men	Women
Uniform Legislation, Commission on	0	8	0	7	1	7	1	0	0	0	0	0	0
Univ. of Connecticut Health Center Finance Corp., Board of Directors	3	2	0	2	0	2	0	0	0	0	0	0	0
University of Connecticut, Board of Trustees for	6	14	1	10	4	9	3	1	0	0	1	0	0
Veterinary Medicine, Connecticut Board of	0	5	0	3	2	2	2	0	0	1	0	0	0
Whiting Forensic Division Advisory Board	3	7	2	6	1	5	1	0	0	0	0	1	0
Women, Permanent Commission on the Status of	0	15	6	0	15	0	10	0	4	0	1	0	0
Workers' Compensation Commission	0	16	0	11	5	9	4	1	1	1	0	0	0
Workers' Compensation Commission, Advisory Board of the	0	8	0	7	1	7	1	0	0	0	0	0	0
Youth Policy Council	0	18	0	11	7	7	6	1	0	3	1	0	0
Totals:	247	1,806	344	1,082	724	950	566	77	94	30	36	25	28

APPENDIX C

Table of Enabling Authorities and Contact Information

**Supplemental Information for Reporting Bodies Listed in
Gender and Racial Composition of Connecticut State Boards and Commissions
2011 Report**

Compiled by the Office of Secretary of the State Denise Merrill

Board, Commission, Committee or Council	Enabling Authority*	Mailing Address	Telephone
Academic Awards, Board for State	CGS 10a-143	55 Paul J. Manafort Drive New Britain CT 06053-2150	(860) 832-3875
Accountancy, State Board of	CGS 20-280	30 Trinity St. Hartford CT 06106	(860) 509-6180
Adoption Review Board	CGS 45a-763	186 Newington Rd West Hartford CT 06110	(860) 231-2442
Adoption Subsidy Review Board	CGS 17a-117(c)	c/o Commissioner, DCF 505 Hudson St Hartford CT 06106	(860) 550-6461
African-American Affairs Commission	CGS 2-121	State Capitol, Room 509 Hartford CT 06106-1591	(860) 240-0258
Aging, Commission on	CGS 17b-420	State Capitol, Room 509 Hartford CT 06106	(860) 240-5206
Agricultural Experiment Station Board of Control	CGS 22-79	PO Box 1106 New Haven CT 06504	2039748440
Allied Health Workforce Policy Board, Connecticut	CGS 4-124dd	c/o DECD One Constitution Plaza Hartford CT 06106	(860) 258-4304
Apprenticeship Council, Connecticut State	CGS 31-22n	c/o Dept. of Labor 200 Folly Brook Blvd. Wethersfield CT 06109-1114	(860) 263-6505
Asian Pacific American Affairs Commission	CGS 2-122	18-20 Trinity St, Rm 202 Hartford CT 06106	(860) 209-4726
Barbers, Hairdressers and Cosmeticians, Connecticut Examining Board for	CGS 20-235a	c/o DPH, Public Health Hearing Office 410 Capitol Ave MS# 13PHO Hartford CT 06134-0308	(860) 509-7648
Bicycle and Pedestrian Advisory Board, Connecticut	CGS 13b-13a	c/o DOT 2800 Berlin Turnpike Newington CT 06131-7546	(860) 594-2149
Birth-to-Three Coordinating Council, State Interagency	CGS 17a-248b	c/o DDS, CT Birth to Three System 460 Capitol Ave Hartford CT 06106	(860) 418-8716
Blind, Board of Directors, Education and Services for the	CGS 10-293	Bureau of Rehabilitative Services, BESB Program 184 Windsor Ave Windsor CT 06095	(860) 602-4160
Boxing Commission, Connecticut	CGS 29-143i	c/o DESPP 1111 Country Club Rd Middletown CT 06457-9294	(860) 274-3102
Building Code Training Council	CGS 29-251b	c/o State Building Inspector 1111 Country Club Rd Middletown CT 06457-9294	(860) 685-8217

* Abbreviations for “Enabling Authority” column are as follows: CFR = *Code of Federal Regulations*; CGS = *Connecticut General Statutes*; Exec. Order = Executive Order of the Governor; HR = House Resolution (U.S. Congress); PA = Public Act of the Connecticut General Assembly; SA = Special Act of the Connecticut General Assembly; USC = *United States Code*.

See page 13 for information about access to enabling authority text.

**Supplemental Information for Reporting Bodies Listed in
Gender and Racial Composition of Connecticut State Boards and Commissions
2011 Report**

Compiled by the Office of Secretary of the State Denise Merrill

Board, Commission, Committee or Council	Enabling Authority*	Mailing Address	Telephone
Camp Harkness Advisory Committee	CGS 17a-217a	c/o Director, Camp Harkness 301 Great Neck Rd Waterford CT 06385	(860) 841-1665
Capitol Child Development Center Advisory Committee	SA 87-78 and incorporation	c/o Office of Legislative Management Legislative Office Bldg. Room 5100 Hartford CT 06106	(860) 240-8633
Capitol Preservation and Restoration, State Commission on	CGS 4b-60	Legislative Office Bldg Room 5100 Hartford CT 06106	(860) 240-0100
Chemical Innovations Institute Board of Directors	CGS 22a-903	c/o Division Occupational and Environmental Medicine University of Connecticut Health Center 270 Farmington Ave.; MC-6210 Farmington CT 06030-6210	(860) 679-4720
Child Day Care Council	CGS 17b-748	c/o DSS, Office of the Commissioner 25 Sigourney St Hartford CT 06106-5033	(860) 424-5006
Child Support Guidelines, Commission for	CGS 46b-215a	c/o DSS, Director of Child Support 25 Sigourney St, 10th Flr Hartford CT 06106	(860) 424-5269
Children and Families, State Advisory Council on	CGS 17a-4	c/o Commissioner's Office, DCF 505 Hudson St Hartford CT 06106	(860) 550-6304
Children, Commission on	CGS 46a-126	18-20 Trinity St Hartford CT 06106	(860) 240-0078
Children's Behavioral Health Advisory Committee	CGS 17a-4a	c/o DCF, Behavioral Health and Medicine 505 Hudson St, 8th Floor Hartford CT 06106	(860) 832-5511
Children's Trust Fund Council	CGS 17a-50(b)	c/o DSS 25 Sigourney St. 10th Floor Hartford CT 06106	(860) 424-5623
Chiropractic Examiners, State Board of	CGS 20-25	c/o DPH, Public Health Hearing Office 410 Capitol Ave MS#13PHO Hartford CT 06134-0308	(860) 509-7648
Clean Energy Finance and Investment Authority Board of Directors	PA 11-80, Section 99	865 Brook Street Rocky Hill CT 06067	(860) 257-2170
Code Training and Education Board of Control	CGS 29-251c(b), PA 51, Sec. 90	c/o Commissioner of Construction Services 165 Capitol Ave Hartford CT 06106	(860) 685-8217

* Abbreviations for "Enabling Authority" column are as follows: CFR = *Code of Federal Regulations*; CGS = *Connecticut General Statutes*; Exec. Order = Executive Order of the Governor; HR = House Resolution (U.S. Congress); PA = Public Act of the Connecticut General Assembly; SA = Special Act of the Connecticut General Assembly; USC = *United States Code*.

See page 13 for information about access to enabling authority text.

**Supplemental Information for Reporting Bodies Listed in
Gender and Racial Composition of Connecticut State Boards and Commissions
2011 Report**

Compiled by the Office of Secretary of the State Denise Merrill

Board, Commission, Committee or Council	Enabling Authority*	Mailing Address	Telephone
Community Economic Development Fund Foundation Board of Directors	CGS 8-240k, 8-240l	c/o Community Economic Development Fund 965 East Main St. Meriden CT 06450	(203) 235-2333 Ext. 2080
Community-Technical Colleges, Board of Trustees	CGS 10a-71	61 Woodland St Hartford CT 06105	(860) 244-7602
Computer-Assisted Mass Appraisal Systems Advisory Board	CGS 12-62f(f)	c/o OPM Attn: David LeVasseur, Intergovernmental Policy Division 450 Capitol Ave Hartford CT 06106-1308	(860) 418-6221
Connecticut Humanities Council Inc., Board of Directors	Incorporation and 20 USC 956(f)(2)(B)	c/o Stuart L. Parnes, Executive Director 37 Broad St Middletown CT 06457	(860) 685-2260
Connecticut Maritime Commission	CGS 13b-51a	c/o DOT, Aviation and Ports Leasing Attn: Charles Beck, Transportation Maritime Manager 2800 Berlin Turnpike Newington CT 06131	(860) 594-2550
Connecticut Milk Promotion Board	CGS 22-137a	c/o Commissioner, DoAG 165 Capitol Ave Hartford CT 06106	(860) 713-2552
Connecticut Valley Hospital Advisory Council	CGS 17a-471a(b)	c/o Connecticut Valley Hospital P.O. Box 351 Silver Street Middletown CT 06457	(860) 262-6110
Consulting & Research Projects Compliance Monitoring Committee, UConn	CGS 1-84(r)(3)	c/o UConn Faculty Consulting Office, Dr. Sally Reis Gulley Hall Unit 2086 352 Mansfield Rd. Storrs CT 06269-2086	(860) 486-6796
Crane Operators, Examining Board for	CGS 29-222	1111 Country Club Rd Middletown CT 06457-9294	(860) 685-8223
Criminal Justice Commission	CGS 51-275a	c/o Chief State's Attorney Office 300 Corporate Place Rocky Hill CT 06067	(860) 258-5850
Culture and Tourism, Advisory Committee	CGS 10-393, PA 11-48	One Constitution Plaza, 2nd Flr Hartford CT 06103	(860) 256-2727
Deaf and Hearing Impaired, State Commission on the	CGS 46a-28	PO Box 330730 67 Prospect Ave. 3rd. Flr. West Hartford CT 06133	(860) 231-8756
Dental Commission, State	CGS 20-103a	c/o DPH, Public Health Hearing Office 410 Capitol Ave MS# 13PHO Hartford CT 06134-0308	(860) 509-7648

* Abbreviations for "Enabling Authority" column are as follows: CFR = *Code of Federal Regulations*; CGS = *Connecticut General Statutes*; Exec. Order = Executive Order of the Governor; HR = House Resolution (U.S. Congress); PA = Public Act of the Connecticut General Assembly; SA = Special Act of the Connecticut General Assembly; USC = *United States Code*.

See page 13 for information about access to enabling authority text.

**Supplemental Information for Reporting Bodies Listed in
Gender and Racial Composition of Connecticut State Boards and Commissions
2011 Report**

Compiled by the Office of Secretary of the State Denise Merrill

Board, Commission, Committee or Council	Enabling Authority*	Mailing Address	Telephone
Developmental Disabilities, State Council on	42 USC 15025	460 Capitol Ave Hartford CT 06106	(860) 418-6157
Developmental Services, Council on	CGS 17a-270	c/o DDS, Commissioner's Office 460 Capitol Ave. Hartford CT 06106	(860) 418-6157
Disabilities, Fatality Review Board for	Exec. Order 25 (Rowland, 2002)	c/o Office of P & A for Persons with Disabilities 60-B Weston St Hartford CT 06120-1551	(860) 297-4307
E 9-1-1 Commission	CGS 28-29a	c/o DESPP, OSET 1111 Country Club Rd Middletown CT 06457	(860) 685-8127
Education, State Board of	CGS 10-1	165 Capitol Ave Hartford CT 06106	(860) 713-6510
Elections Enforcement Commission, State	CGS 9-7a	18-20 Trinity St. Hartford CT 06106	(860) 256-2922
Electrical Work Board	CGS 20-331	c/o DCP 165 Capitol Ave. Rm 110 Hartford CT 06106	(860) 869-0560
Electrologists, Board of Examiners of	CGS 20-268	c/o DPH, Public Health Hearing Office 410 Capitol Ave. MS#13PHO Hartford CT 06134-0308	(860) 509-7648
Elevator Installation, Repair and Maintenance Board	CGS 20-331	c/o DCP, Occupational & Professional Licensing 165 Capitol Ave Hartford CT 06106	(860) 209-1545
Embalmers and Funeral Directors, Connecticut Board of Examiners of	CGS 20-208	c/o DPH, Public Health Hearing Office 410 Capitol Ave. MS13PHO Hartford CT 06134-0308	(860) 509-7648
Emergency Medical Services Advisory Board	CGS 19a-178a	c/o Dept of Public Health 410 Capitol Ave, MS#12EMS Hartford CT 06134-0308	(860) 714-5549
Emergency Response Commission, Connecticut	CGS 22a-601	c/o DEEP 79 Elm St. Hartford CT 06106-5127	(203) 265-8205
Employee Misclassification Advisory Board	CGS 31-57i	c/o Commissioner, DOL 200 Folly Brook Blvd Wethersfield CT 06109	(860) 263-6505
Employees' Review Board	CGS 5-201(a)	165 Capitol Ave 5th Floor South Hartford CT 06106	(860) 649-9129
Employment and Training Commission, Connecticut	CGS 31-3h, 31-3i	c/o Rina Bakalar, Exec. Director OWC DOL 200 Folly Brook Boulevard Wethersfield CT 06109	(860) 263-6523

* Abbreviations for "Enabling Authority" column are as follows: CFR = *Code of Federal Regulations*; CGS = *Connecticut General Statutes*; Exec. Order = Executive Order of the Governor; HR = House Resolution (U.S. Congress); PA = Public Act of the Connecticut General Assembly; SA = Special Act of the Connecticut General Assembly; USC = *United States Code*.

See page 13 for information about access to enabling authority text.

**Supplemental Information for Reporting Bodies Listed in
Gender and Racial Composition of Connecticut State Boards and Commissions
2011 Report**

Compiled by the Office of Secretary of the State Denise Merrill

Board, Commission, Committee or Council	Enabling Authority*	Mailing Address	Telephone
Employment Security Board of Review	CGS 31-237c	c/o DOL, Board of Review/Appeals Division 38 Wolcott Hill Rd. Wethersfield Ct 06109	(860) 263-6968
Employment Security Division Advisory Board to the Labor Commissioner	CGS 31-250a	c/o DOL 200 Folly Brook Blvd Wethersfield CT 06109	(860) 263-6760
Environmental Quality, Council on	CGS 22a-11	79 Elm St 6th Flr Hartford CT 06106	(860) 424-4000
Equine Advisory Council	CGS 23-10d	c/o Commissioner, DEEP 79 Elm St Hartford CT 06106	(860) 684-6583
Ethics Advisory Board, Citizen's	CGS 1-80	c/o Office of State Ethics 18-20 Trinity St. Hartford CT 06106	(860) 263-2401
Family Support Council	CGS 17a-219c	c/o Commissioner, DDS 460 Capitol Ave Hartford CT 06106	(203) 556-7317
Farm Wine Development Council	CGS 22-26c	c/o Commissioner, DoAG 165 Capitol Ave Hartford CT 06106	(860) 713-2552
Farmland Preservation Advisory Board	CGS 22-26ll	c/o DoAg, Farmland Preservation Program Attn: J. Joseph Dippel, Director 165 Capitol Ave Hartford CT 06106	(860) 713-2511
Finance Advisory Committee	CGS 4-93	c/o OPM 450 Capitol Ave MS 55 SEC Hartford CT 06106	(860) 418-6272
Fire Marshal Training Council	CGS 29-298a	c/o Dept of Construction Services 165 Capitol Ave Hartford CT 06106	(860) 685-8152
Fire Prevention and Control, Commission on	CGS 7-323k	Connecticut Fire Academy 34 Perimeter Rd. Windsor Locks CT 06096-1069	(860) 627-6363 Ext. 230
Fire Protection Sprinkler Systems Board	CGS 20-331	c/o DCP 165 Capitol Ave. Rm 110 Hartford CT 06106	(203) 634-1948
Firearms Permit Examiners, Board of	CGS 29-32b	c/o Office of Governmental Accountability 505 Hudson St., 5th Floor Hartford CT 06106	(860) 566-7072
Five Mile River Commission	CGS 15-26a	PO Box 119 Rowayton CT 06853	(203) 866-4050

* Abbreviations for "Enabling Authority" column are as follows: CFR = *Code of Federal Regulations*; CGS = *Connecticut General Statutes*; Exec. Order = Executive Order of the Governor; HR = House Resolution (U.S. Congress); PA = Public Act of the Connecticut General Assembly; SA = Special Act of the Connecticut General Assembly; USC = *United States Code*.

See page 13 for information about access to enabling authority text.

**Supplemental Information for Reporting Bodies Listed in
Gender and Racial Composition of Connecticut State Boards and Commissions
2011 Report**

Compiled by the Office of Secretary of the State Denise Merrill

Board, Commission, Committee or Council	Enabling Authority*	Mailing Address	Telephone
Food Policy Council, Connecticut	CGS 22-456	c/o Commissioner of Agriculture 165 Capitol Ave Hartford CT 06106	(860) 486-1783
Forest Practices Advisory Board	CGS 23-65g	c/o DEEP, State Forester 79 Elm St. Hartford CT 06106	(860) 424-3631
Freedom of Information Commission	CGS 1-205(a)	18-20 Trinity St. Hartford CT 06106	(860) 566-5682
Gaming Policy Board	CGS 12-557d	c/o DCP, Gaming Division 555 Russell Rd. Newington CT 06111	(860) 594-0502
Greater Hartford Flood Commission	SA 72 (1955 Nov. Special Session); SA 292 (1957)	525 Main St. Hartford CT 06106	(860) 757-9975
Greenways Council, Connecticut	CGS 23-102	c/o DEEP 79 Elm St. Hartford CT 06106	(860) 424-3578
Gubernatorial Incapacity, Council on	CGS 3-1a and State Constitution Amendments Article 22	c/o Hon. Chase T. Rogers, Chief Justice of the Supreme Court 231 Capitol Ave Hartford CT 06106	(860) 706-5280
Head Start Funds Advisory Committee	CGS 10-16n(c)	c/o Dept of Education Bureau of Early Childhood 165 Capitol Avenue Hartford CT 06106	(860) 713-6771
Health Equity, Commission on	CGS 38a-1051	c/o Office of the Health Care Advocate PO Box 1543 Hartford CT 06144	(860) 297-3847
Highway Work Zone Safety Advisory Council	CGS 14-212e	c/o Commissioner, DOT 2800 Berlin Tnpk Newington CT 06131-7546	(860) 594-2667
Historic Preservation Council	CGS 10-409	c/o State Historic Preservation Office DECD One Constitution Plaza, 2nd Floor Hartford CT 06103	(860) 256-2754
Historic Preservation, Connecticut Trust for, Board of Trustees	SA 75-93 sec. 3, SA 85-42	940 Whitney Ave Hamden CT 06517-4002	(203) 562-6312
Historical Records Advisory Board, State	36 CFR 1206.41	c/o Connecticut State Library Attn: State Archivist 231 Capitol Ave. Hartford CT 06106	(860) 757-6511

* Abbreviations for “Enabling Authority” column are as follows: CFR = *Code of Federal Regulations*; CGS = *Connecticut General Statutes*; Exec. Order = Executive Order of the Governor; HR = House Resolution (U.S. Congress); PA = Public Act of the Connecticut General Assembly; SA = Special Act of the Connecticut General Assembly; USC = *United States Code*.

See page 13 for information about access to enabling authority text.

**Supplemental Information for Reporting Bodies Listed in
Gender and Racial Composition of Connecticut State Boards and Commissions
2011 Report**

Compiled by the Office of Secretary of the State Denise Merrill

Board, Commission, Committee or Council	Enabling Authority*	Mailing Address	Telephone
Homeopathic Medical Examining Board, Connecticut	CGS 20-8	c/o DPH, Public Health Hearing Office 410 Capitol Ave. MS#13PHO Hartford CT 06134-0308	(860) 509-7648
Housing Matters, Citizens Advisory Council for	CGS 47a-71a	c/o Raphael L. Podolsky 104 Beacon St Hartford CT 06105	(860) 836-6355
Human Rights & Opportunities, Commission on	CGS 46a-52	c/o CHRO 25 Sigourney St. Hartford CT 06106	(860) 241-4866
Independent Living Council, Inc, Connecticut State	CGS 17b-615; 29 USC 796d, Incorporation	151 New Park Ave Stes121 and 123 Hartford CT 06106	(860) 523-0126
Insurance and Risk Management Board, State	CGS 4a-19	c/o DAS 165 Capitol Ave., Rm 277 Hartford CT 06106	(860) 713-5224
Intergovernmental Relations, Connecticut Advisory Commission on	CGS 2-79a	c/o OPM 450 Capitol Ave, MS #54 ORG Hartford CT 06106	(860) 519-8003
Invasive Plants Council	CGS 22a-381	c/o DEEP, Commissioner 79 Elm St Hartford CT 06106	(860) 424-3487
Investment Advisory Council	CGS 3-13b	c/o Treasurer's Office 55 Elm St. Hartford CT 06106	(212) 634-1186
Judicial Review Council	CGS 51-51k	505 Hudson St. Hartford CT 06106	(860) 566-5424
Judicial Selection Commission	CGS 51-44a	165 Capitol Ave Room 241 Hartford CT 06106	(860) 713-5300
Juvenile Jurisdiction Policy and Operations Coordinating Council	PA 11-51, Section 34	c/o Hon. Toni E. Walker Legislative Office Building, Room 2700 Hartford CT 06106-1591	(860) 240-0394
Juvenile Justice Advisory Committee	42 USC 5633	c/o OPM 450 Capitol Ave MS # 52CJP Hartford CT 06106-1379	(860) 418-6316
Labor Relations, Connecticut State Board of	CGS 31-102	38 Wolcott Hill Road Wethersfield CT 06109	(860) 263-6860
Latino and Puerto Rican Affairs Commission	CGS 2-120	18-20 Trinity St Hartford CT 06106	(860) 240-0097
Liquor Control Commission	CGS 30-2	c/o DCP 165 Capitol Ave. Hartford CT 06106	(860) 713-6050

* Abbreviations for “Enabling Authority” column are as follows: CFR = *Code of Federal Regulations*; CGS = *Connecticut General Statutes*; Exec. Order = Executive Order of the Governor; HR = House Resolution (U.S. Congress); PA = Public Act of the Connecticut General Assembly; SA = Special Act of the Connecticut General Assembly; USC = *United States Code*.

See page 13 for information about access to enabling authority text.

**Supplemental Information for Reporting Bodies Listed in
Gender and Racial Composition of Connecticut State Boards and Commissions
2011 Report**

Compiled by the Office of Secretary of the State Denise Merrill

Board, Commission, Committee or Council	Enabling Authority*	Mailing Address	Telephone
Long Island Sound Advisory Council, Central	CGS 25-154	c/o Susan McNamara UConn, Dept of Marine Sciences 1080 Shennecossett Rd. Groton CT 06340-6048	(860) 405-9166
Long Island Sound Advisory Council, Eastern	CGS 25-154	c/o Susan McNamara UConn, Dept of Marine Sciences 1080 Shennecossett Rd. Groton CT 06340-6048	(860) 405-9166
Long Island Sound Advisory Council, Western	CGS 25-154	c/o Susan McNamara UConn, Dept of Marine Sciences 1080 Shennecossett Rd. Groton CT 06340-6048	(860) 405-9166
Long-Term Care Advisory Council	17b-338	c/o Commission on Aging, Exec. Dir. State Capitol, Room 509 210 Capitol Ave Hartford CT 06106	(860) 240-5200
Marketing Authority, Connecticut, Board of Directors	CGS 22-63	c/o Regional Market 101 Reserve Road Hartford CT 06114	(860) 748-7214
Martin Luther King, Jr. Holiday Commission	CGS 10-29b	c/o CHRO 25 Sigourney St Hartford CT 06106	(860) 241-4866
Mediation and Arbitration, Board of	CGS 31-91	c/o DOL, Mediation & Arbitration 38 Wolcott Hill Rd. Wethersfield CT 06109	(860) 263-6880
Medical Examining Board, Connecticut	CGS 20-8a	c/o DPH, Public Health Hearing Office 410 Capitol Ave. MS#13PHO Hartford CT 06134-0308	(860) 509-7648
Medicolegal Investigations, Commission on	CGS 19a-401(a)	c/o Chief Medical Examiner's Office 11 Shuttle Rd Farmington CT 06032	(860) 679-3987
Mental Health and Addiction Services, Board of	CGS 17a-456	c/o Commissioner, DMHAS 410 Capitol Ave MS # 14 COM Hartford CT 06134	(860) 418-6967
Metro North New Haven Rail Commuter Council	CGS 13b-212b	PO Box 4256 Camp Ave Station Stamford CT 06907	(203) 655-0138
Metropolitan District for the County of Hartford, Board of Commissioners	SA 75-73 (1975), SA 84-75 S.1, P.A. 93-380 sec 16	c/o Metropolitan District Commission 555 Main St Hartford CT 06142-0800	(860) 278-7850 Ext. 3207
Milk Regulation Board	CGS 22-131	c/o Dept. of Agriculture Bureau of Regulation and Inspection 165 Capitol Ave Hartford CT 06106	(860) 713-2508

* Abbreviations for "Enabling Authority" column are as follows: CFR = *Code of Federal Regulations*; CGS = *Connecticut General Statutes*; Exec. Order = Executive Order of the Governor; HR = House Resolution (U.S. Congress); PA = Public Act of the Connecticut General Assembly; SA = Special Act of the Connecticut General Assembly; USC = *United States Code*.

See page 13 for information about access to enabling authority text.

**Supplemental Information for Reporting Bodies Listed in
Gender and Racial Composition of Connecticut State Boards and Commissions
2011 Report**

Compiled by the Office of Secretary of the State Denise Merrill

Board, Commission, Committee or Council	Enabling Authority*	Mailing Address	Telephone
Mobile Manufactured Home Advisory Council	CGS 21-84a	c/o DCP, Occupational & Professional Licensing 165 Capitol Ave Hartford CT 06106	(860) 713-6091
Municipal Finance Advisory Commission	CGS 7-394b	c/o OPM 450 Capitol Ave 54MFS Hartford CT 06106-1308	(860) 418-6402
National and Community Service, Connecticut Commission on	Exec Order 9 (Weicker) and 42 USC 12638	Jacqueline M. Johnson, Exec. Dir. Office Financial & Academic Affairs for Higher Ed 61 Woodland St. Hartford CT 06105-2326	(860) 947-1827
Native American Heritage Advisory Council	CGS 10-382	c/o DEEP, Indian Affairs 79 Elm St Hartford CT 06106	(860) 424-3066
Natural Heritage, Open Space and Watershed Land Acquisition Review Board	CGS 7-131e(c)	c/o DEEP Attn: Elizabeth Brothers, Land Acquisition & Mgt Division 79 Elm St. Hartford CT 06106-5127	(860) 424-3086
Natureopathic Examiners, State Board of	CGS 20-35	c/o DPH, Public Health Hearing Office 410 Capitol Ave. MS#13PHO Hartford CT 06134-0308	(860) 509-7648
Nitrogen Credit Advisory Board	CGS 22a-523	c/o DEEP Bureau of Water Protection and Land Reuse 79 Elm St. Hartford CT 06106	(860) 424-3704
Nuclear Energy Advisory Council	CGS 16-11a	c/o DEEP Commissioner 79 Elm St Hartford CT 06106	(860) 442-9053
Nursing, Connecticut State Board of Examiners for	CGS 20-88	c/o DPH, Public Health Hearing Office 410 Capitol Ave MS#13PHO Hartford CT 06134-0308	(860) 509-7648
Occupational Health Clinics Advisory Committee	CGS 31-402	Attn: Kenneth Tucker, Program Manager c/o DOL, Occup. Safety and Health Division 38 Wolcott Hill Rd Wethersfield CT 06109	(860) 263-6929
Occupational Safety and Health Review Commission, Connecticut	CGS 31-376	c/o DOL 38 Wolcott Hill Rd. Wethersfield CT 06109	(860) 263-6929

* Abbreviations for “Enabling Authority” column are as follows: CFR = *Code of Federal Regulations*; CGS = *Connecticut General Statutes*; Exec. Order = Executive Order of the Governor; HR = House Resolution (U.S. Congress); PA = Public Act of the Connecticut General Assembly; SA = Special Act of the Connecticut General Assembly; USC = *United States Code*.

See page 13 for information about access to enabling authority text.

**Supplemental Information for Reporting Bodies Listed in
Gender and Racial Composition of Connecticut State Boards and Commissions
2011 Report**

Compiled by the Office of Secretary of the State Denise Merrill

Board, Commission, Committee or Council	Enabling Authority*	Mailing Address	Telephone
Operation Lifesaver Committee	CGS 13b-376	c/o DOT, Bureau of Public Transportation 2800 Berlin Tnpk Newington CT 06131-7546	(860) 594-2368
Opticians, Connecticut Board of Examiners for	CGS 20-139a	c/o DPH, Public Health Hearing Office 410 Capitol Ave. MS#13PHO Hartford CT 06134-0308	(860) 509-7648
Optometrists, Connecticut Board of Examiners for	CGS 20-128a	c/o DPH, Public Health Hearing Office 410 Capitol Ave. MS#13PHO Hartford CT 06134-0308	(860) 509-7648
Pardons and Paroles, Board of	CGS 54-124a	55 West Main St., Ste 520 Waterbury CT 06702	(203) 805-6685
Pharmaceutical and Therapeutics Committee	CGS 17b-274d and 42 USC 1396r-8	c/o DSS, Commissioner's Office 25 Sigourney St. Hartford CT 06106	(860) 424-5654
Pharmacy, Commission of	CGS 20-572	c/o DCP Drug Control Division 165 Capitol Ave Rm 145 Hartford CT 06106	(860) 713-6070
Physical Therapists, Connecticut State Board of Examiners for	CGS 20-67	c/o DPH, Public Health Hearing Office 410 Capitol Ave. MS#13PHO Hartford CT 06134-0308	(860) 509-7648
Pilot Commission, Connecticut	CGS 15-13c	c/o DOT, Aviation and Ports Leasing Attn: Charles Beck, Transportation Maritime Manager 2800 Berlin Tnpk Newington CT 06131	(860) 594-2550
Podiatry, Connecticut Board of Examiners in	CGS 20-51	c/o DPH, Public Health Hearing Office 410 Capitol Ave. MS#13PHO Hartford CT 06134-0308	(860) 509-7648
Police Officer Standards and Training Council	CGS 7-294b	Connecticut Police Academy 285 Preston Ave. Meriden CT 06450-4891	(203) 238-6505
Probate Judicial Conduct, Council on	CGS 45a-62	Richard Banbury, Exec. Director c/o Rome, McGuigan, P.C. One State St. Hartford CT 06103-3101	(860) 493-3582
Protection and Advocacy for Persons with Disabilities, Board of	CGS 46a-9	60B Weston St. Hartford CT 06120	(860) 297-4307
Psychiatric Security Review Board	CGS 17a-581	505 Hudson St, 1st Floor Hartford CT 06106	(860) 566-1441
Psychologists, Board of Examiners	CGS 20-186	c/o DPH, Public Health Hearing Office 410 Capitol Ave. MS#13PHO Hartford CT 06134-0308	(860) 509-7648

* Abbreviations for "Enabling Authority" column are as follows: CFR = *Code of Federal Regulations*; CGS = *Connecticut General Statutes*; Exec. Order = Executive Order of the Governor; HR = House Resolution (U.S. Congress); PA = Public Act of the Connecticut General Assembly; SA = Special Act of the Connecticut General Assembly; USC = *United States Code*.

See page 13 for information about access to enabling authority text.

**Supplemental Information for Reporting Bodies Listed in
Gender and Racial Composition of Connecticut State Boards and Commissions
2011 Report**

Compiled by the Office of Secretary of the State Denise Merrill

Board, Commission, Committee or Council	Enabling Authority*	Mailing Address	Telephone
Public Defender Services Commission	CGS 51-289	c/o Office of the Chief Public Defender 30 Trinity St. 4th Floor Hartford CT 06106	(860) 509-6429
Public Transportation Commission, Connecticut	CGS 13b-11a	c/o DOT 2800 Berlin Turnpike Newington CT 06111	(860) 594-2820
Public Utilities Regulatory Authority, Board of Commissioners	CGS 16-2	c/o DEEP, PURA 10 Franklin Sq New Britain CT 06051	(860) 827-2625
Racial and Ethnic Disparity in Criminal Justice System, Commission	CGS 51-10c	c/o Judicial Dept, External Affairs 231 Capitol Avenue Hartford CT 06106	(860) 757-2274
Real Estate Commission, Connecticut	CGS 20-311a	c/o DCP 165 Capitol Ave. Rm 110 Hartford CT 06106	(860) 713-6213
Rehabilitation Council, State	29 USC 725	c/o Bureau of Rehabilitation Services 25 Sigourney St. 11th Flr. Hartford CT 06106	(860) 424-4871
Rehabilitation Council, State (for Individuals who are Blind)	29 USC 725(a)(2)	c/o Bureau of Rehabilitative Services - BESB Program 184 Windsor Ave Windsor CT 06095	(860) 602-4008
School Administrator Professional Standards, Advisory Council for	CGS 10-144e	c/o Commissioner, DOE 165 Capitol Ave Rm 305 Hartford CT 06106	(860) 713-6819
Seafood Advisory Council, Connecticut	CGS 22-455	c/o Barbara Gordon 195 Wood Pond Rd West Hartford CT 06107	(203) 874-0696
Shorthand Reporters, State Board of Examiners of	CGS 20-651	c/o DCP, Occupational & Professional Licensing 165 Capitol Ave Hartford CT 06106	(860) 549-1850
Siting Council, Connecticut	CGS 16-50g et seq.	10 Franklin Square New Britain CT 06051	(860) 827-2969
Southbury Training School Board of Trustees	CGS 17a-271	P.O.Box 872 Southbury CT 06488	(203) 586-2000
Special Contaminated Property Remediation and Insurance Fund Advisory Board	CGS 22a-133u	c/o DECD, Infrastructure and Real Estate ATTN: Ned Moore, SCPRIF Program Manager 505 Hudson St Hartford CT 06106	(860) 270-8148
Special Education, Advisory Council for	CGS 10-76i	c/o Commissioner, Dept of Education 165 Capitol Ave Hartford CT 06145-2219	(860) 713-6932

* Abbreviations for “Enabling Authority” column are as follows: CFR = *Code of Federal Regulations*; CGS = *Connecticut General Statutes*; Exec. Order = Executive Order of the Governor; HR = House Resolution (U.S. Congress); PA = Public Act of the Connecticut General Assembly; SA = Special Act of the Connecticut General Assembly; USC = *United States Code*.

See page 13 for information about access to enabling authority text.

**Supplemental Information for Reporting Bodies Listed in
Gender and Racial Composition of Connecticut State Boards and Commissions
2011 Report**

Compiled by the Office of Secretary of the State Denise Merrill

Board, Commission, Committee or Council	Enabling Authority*	Mailing Address	Telephone
Standardization Committee	CGS 4a-58	c/o DAS 165 Capitol Ave. Rm. 491 Hartford CT 06106	(860) 713-5093
State Employee Campaign Committee	CGS 5-262	c/o Kevin Lembo, Comptroller 55 Elm St. Hartford CT 06106	(860) 402-8430
State Employee Disability Retirement, Medical Examining Board for	CGS 5-169(c)	c/o Comptroller, Retirement Services Div. 55 Elm St Hartford CT 06106	(860) 702-3499
State Employees Retirement Commission, Connecticut	CGS 5-155a	c/o Comptroller's Office Retirement & Benefit Services Division 55 Elm St. Hartford CT 06106	(860) 702-3316
State Library Board	CGS 11-1	Connecticut State Library 231 Capitol Ave Hartford CT 06106	(860) 757-6510
State Marshal Commission	CGS 6-38b	c/o DAS 165 Capitol Ave, Rm 483 Hartford CT 06106	(860) 713-5372
State Properties Review Board	CGS 4b-3	165 Capitol Ave RM 123 Hartford CT 06106	(860) 713-6403
Stem Cell Research Advisory Committee	CGS 19a-32f	c/o DPH, Office of the Commissioner 410 Capitol Avenue, MS#13COM Hartford CT 06106	(860) 509-7405
Teacher Professional Standards, Advisory Council for	CGS 10-144d	c/o Commissioner, DOE 165 Capitol Ave Rm 305 Hartford CT 06106	(860) 713-6811
Teachers' Retirement Board	CGS 10-183l	765 Asylum Ave Hartford CT 06105	(860) 241-8402
Tobacco and Health Trust Fund Board of Trustees	CGS 4-28f(c)	c/o OPM 450 Capitol Ave Hartford CT 06106-1308	(860) 418-6359
Trafficking in Persons Council	CGS 46a-170	c/o PCSW 18-20 Trinity St Hartford CT 06106	(860) 240-8442
Tree Protection Examining Board, State	CGS 23-61a(b)	c/o Conn. Agricultural Experiment Station PO Box 1106 New Haven CT 06504-1106	(203) 974-8495
UConn Construction Management Oversight Committee	CGS 10a-109bb	c/o UConn Board of Trustees 352 Mansfield Rd Storrs CT 06269-2048	(860) 486-2337

* Abbreviations for "Enabling Authority" column are as follows: CFR = *Code of Federal Regulations*; CGS = *Connecticut General Statutes*; Exec. Order = Executive Order of the Governor; HR = House Resolution (U.S. Congress); PA = Public Act of the Connecticut General Assembly; SA = Special Act of the Connecticut General Assembly; USC = *United States Code*.

See page 13 for information about access to enabling authority text.

**Supplemental Information for Reporting Bodies Listed in
Gender and Racial Composition of Connecticut State Boards and Commissions
2011 Report**

Compiled by the Office of Secretary of the State Denise Merrill

Board, Commission, Committee or Council	Enabling Authority*	Mailing Address	Telephone
Underground Storage Tank Petroleum Clean-Up Account Review Board	CGS 22a-449d(b)	c/o DEEP Bureau of Water Protection and Land Reuse 79 Elm St, 4th Floor Hartford CT 06106	(860) 424-3336
Uniform Legislation, Commission on	CGS 2-80	c/o Joint Committee on Legislative Mgt, Executive Director Legislative Office Building Rm 5100 Hartford CT 06106	(860) 233-4200
Univ. of Connecticut Health Center Finance Corp., Board of Directors	CGS 10a-253	Attn: Judy DeVitto UConn Health Center Finance Corporation 263 Farmington Ave Farmington CT 06030-5338	(860) 679-2222
University of Connecticut, Board of Trustees for	CGS 10a-103	Attn: Susan A. Locke 352 Mansfield Rd. Storrs CT 06269-2048	(860) 486-4894
Veterinary Medicine, Connecticut Board of	CGS 20-196	c/o DPH, Public Health Hearing Office 410 Capitol Ave. MS#13PHO Hartford CT 06134-0308	(860) 509-7648
Whiting Forensic Division Advisory Board	CGS 17a-565	c/o Whiting Forensic Division, Director's Office PO Box 70 O'Brien Drive Middletown CT 06457	(860) 262-5441
Women, Permanent Commission on the Status of	CGS 46a-1	18-20 Trinity St. Hartford CT 06106	(860) 240-8441
Workers' Compensation Commission	CGS 31-276	21 Oak St. 4th Floor Hartford CT 06106	(860) 493-1518
Workers' Compensation Commission, Advisory Board of the	CGS 31-280a	c/o Chairman, WCC 21 Oak St 4th Flr Hartford CT 06106	(860) 493-1500
Youth Policy Council	SA 08-3	c/o DECD One Constitution Plaza Hartford CT 06106	(860) 258-4304

Enabling Authority Text

An “enabling authority” is a law or executive order that creates a board or commission. The text of the law or executive order will generally identify appointing authorities, specify the number of board or commission members, and list required qualifications for membership. The laws and executive

* Abbreviations for “Enabling Authority” column are as follows: CFR = *Code of Federal Regulations*; CGS = *Connecticut General Statutes*; Exec. Order = Executive Order of the Governor; HR = House Resolution (U.S. Congress); PA = Public Act of the Connecticut General Assembly; SA = Special Act of the Connecticut General Assembly; USC = *United States Code*.

See page 13 for information about access to enabling authority text.

**Supplemental Information for Reporting Bodies Listed in
Gender and Racial Composition of Connecticut State Boards and Commissions
2011 Report**

Compiled by the Office of Secretary of the State Denise Merrill

orders creating most of the boards and commissions listed in this table can be found on the Internet at the links described below. The links were current as of May 10, 2012.

Text of the *Connecticut General Statutes* (CGS), the *Connecticut Public Acts* (PA) from 1988 to date, and the *Connecticut Special Acts* (SA) from 1988 to date are available on the web site of the Connecticut General Assembly at <http://www.cga.ct.gov/>

Executive Orders of Governor Rell are available on the Governor's archived web site at <http://www.ct.gov/governorrell/>

Executive Orders of Governor Rowland are available on the Governor's archived web site at <http://www.ct.gov/governorrowland/>

Executive Orders of Governor Malloy are available on the Governor's web site at <http://www.governor.ct.gov/malloy/cwp/view.asp?a=11&Q=470854>

U.S. Congress *House Resolutions* (HR) are available through the Library of Congress web site at <http://thomas.loc.gov/>

The United States Code (USC) can be accessed through the U.S. Government Printing Office's FDSys, Federal Digital System web site at <http://www.gpo.gov/fdsys/browse/collectionUSCode.action?collectionCode=USCODE>

The *United States Code of Federal Regulations* (CFR) is available through the U.S. Government Printing Office's FDSys, Federal Digital System web site at <http://www.gpo.gov/fdsys/browse/collectionCfr.action?collectionCode=CFR>

* Abbreviations for "Enabling Authority" column are as follows: CFR = *Code of Federal Regulations*; CGS = *Connecticut General Statutes*; Exec. Order = Executive Order of the Governor; HR = House Resolution (U.S. Congress); PA = Public Act of the Connecticut General Assembly; SA = Special Act of the Connecticut General Assembly; USC = *United States Code*.

See page 13 for information about access to enabling authority text.

Appendix D

Table of Boards and Commissions Reported as
Inactive, Defunct, Not Yet Organized, or Status Unknown

BOARDS AND COMMISSIONS REPORTED AS DEFUNCT, INACTIVE, NOT YET ORGANIZED, OR OF UNKNOWN STATUS
Gender and Racial Composition of Connecticut State Boards and Commissions
2011 Report

Compiled by the Office of Secretary of the State Denise Merrill

Board, Commission, Committee or Council	Enabling Authority*	Reported As:	Mailing Address	Telephone	Notes
Adult Literacy Leadership Board	CGS 31-11cc	Defunct	c/o DECD One Constitution Plaza Hartford CT 06106	(860) 258-4301	
Agricultural Development, Governor's Council for	CGS 22-26e	Not yet organized	c/o Commissioner, DoAG 165 Capitol Avenue Hartford CT 06106	(860) 713-2573	
Business Tax Credit and Tax Policy Review Committee	CGS 12-217z	Currently Inactive	c/o Chairpersons, Finance, Revenue and Bonding Committee Legislative Office Building, Room 3700 Hartford CT 06106	(860) 240-0460	Note from returned filing indicates "soon to be dissolved 2013"
Capitol Center Commission, Connecticut	CGS 4b-66a	Currently Inactive	c/o Secretary, OPM 450 Capitol Ave Hartford CT 06106-1379		2011, PA 11-51 the commission still exists.
Child Advocate Advisory Committee, Office of the	PA 11-48, Section 70	Not yet organized	c/o Office of the Child Advocate 999 Asylum Ave Hartford CT 06105	(860) 566-2106	
CLIN State Management Board	Exec. Order 12 (1996, Rowland)	Currently Inactive	c/o Adjutant General, Military Department Hartford Armory 360 Broad St Hartford CT 06106	(860) 548-3203	
Connecticut Transportation Strategy Board	CGS 13b-57e	Defunct	c/o OPM, Office of Transportation Policy 450 Capitol Ave Hartford CT 06106-1379	(860) 418-6402	Repealed by PA 11-61, section 88.

* Abbreviations for "Enabling Authority" column are as follows: CFR = *Code of Federal Regulations*; CGS = *Connecticut General Statutes*; Exec. Order = Executive Order of the Governor; HR = House Resolution (U.S. Congress); PA = Public Act of the Connecticut General Assembly; SA = Special Act of the Connecticut General Assembly; USC = *United States Code*.

See page 6 for information about access to enabling authority text.

With the exception of the "Notes" added by the Office of the Secretary of the State, data in this table was submitted by the reporting boards and commissions between September and December 2011

BOARDS AND COMMISSIONS REPORTED AS DEFUNCT, INACTIVE, NOT YET ORGANIZED, OR OF UNKNOWN STATUS
Gender and Racial Composition of Connecticut State Boards and Commissions
2011 Report

Compiled by the Office of Secretary of the State Denise Merrill

Board, Commission, Committee or Council	Enabling Authority*	Reported As:	Mailing Address	Telephone	Notes
Contracting Standards Board, State	CGS 4e-2	Currently Inactive	State Office Bldg. 165 Capitol Ave, Room 173 Hartford CT 06106	(860) 256-2968	
Educational Opportunity for Military Children, State Council	CGS 10-15f	Not Required to File	c/o Commissioner of Education Connecticut State Department of Education 165 Capitol Ave Hartford CT 06106		Members may all be appointed by the Commissioner of Education
Energy Advisory Board, Connecticut	CGS 16a-3 (ammended by PA 11-80, Section 37)	Not yet organized	c/o DEEP Hartford CT 06106	(860) 827-2802	
Higher Education , Planning Commission for	CGS 10a-11b and PA 11-70	Not yet organized	c/o Office of Fin. and Academic Affairs for Higher Education 61 Woodland St Hartford CT 06105	(860) 947-1801	Name changed from Blue Ribbon Commission on Strategic Master Plan for Higher Education in 2011.
Historic Assets in Connecticut, Committee for the Restoration of	CGS 32-6a	Currently Inactive	c/o State Historic Preservation Office DECD One Constitution Plaza, 2nd Flr Hartford CT 06103	(860) 256-2754	
Housing Advisory Committee	CGS 8-385	Defunct	c/o Commissioner, DECD 505 Hudson St Hartford CT 06106		

* Abbreviations for “Enabling Authority” column are as follows: CFR = *Code of Federal Regulations*; CGS = *Connecticut General Statutes*; Exec. Order = Executive Order of the Governor; HR = House Resolution (U.S. Congress); PA = Public Act of the Connecticut General Assembly; SA = Special Act of the Connecticut General Assembly; USC = *United States Code*.

See page 6 for information about access to enabling authority text.

With the exception of the “Notes” added by the Office of the Secretary of the State, data in this table was submitted by the reporting boards and commissions between September and December 2011

BOARDS AND COMMISSIONS REPORTED AS DEFUNCT, INACTIVE, NOT YET ORGANIZED, OR OF UNKNOWN STATUS
Gender and Racial Composition of Connecticut State Boards and Commissions
2011 Report

Compiled by the Office of Secretary of the State Denise Merrill

Board, Commission, Committee or Council	Enabling Authority*	Reported As:	Mailing Address	Telephone	Notes
Innovation and Productivity for State Government, Commission on	CGS 2-110	Currently Inactive	c/o JCLM LOB, Room 5100 Hartford CT 06106		
Knowledge Economy, Council of Advisors on Strategies for the	CGS 4-124ff	Not yet organized	c/o Commissioner, DECD 505 Hudson St Hartford CT 06106-7106	(860) 258-4301	
Law Enforcement Council, Governor's	Exec. Orders 4 and 4a (Rowland)	Operating Status Unknown	c/o Chief State's Attorney 300 Corporate Place Rocky Hill CT 06067	(860) 258-5800	
Local Emergency Relief Advisory Committee	CGS 7-521	Currently Inactive	c/o Commissioner, DESPP 25 Sigourney St, 6th Floor Hartford CT 06106-5042	(860) 256-0816	
Local Public Health Regionalization, Governor's Council for	Exec. Order 26 (Rell)	Defunct	c/o Commissioner of Public Health 410 Capitol Avenue Hartford CT 06134	(860) 509-7544	Apparently established to author one-time report.
Medicare Part D Implementation Advisory Council	CGS 17b-492d	Defunct	c/o Joint Committee on Legislative Management Legislative Office Building Rm 5100 Hartford CT 06106	(860) 240-0100	Repealed by Section 89 of Public Act 09-5

* Abbreviations for "Enabling Authority" column are as follows: CFR = *Code of Federal Regulations*; CGS = *Connecticut General Statutes*; Exec. Order = Executive Order of the Governor; HR = House Resolution (U.S. Congress); PA = Public Act of the Connecticut General Assembly; SA = Special Act of the Connecticut General Assembly; USC = *United States Code*.

See page 6 for information about access to enabling authority text.

With the exception of the "Notes" added by the Office of the Secretary of the State, data in this table was submitted by the reporting boards and commissions between September and December 2011

BOARDS AND COMMISSIONS REPORTED AS DEFUNCT, INACTIVE, NOT YET ORGANIZED, OR OF UNKNOWN STATUS
Gender and Racial Composition of Connecticut State Boards and Commissions
2011 Report

Compiled by the Office of Secretary of the State Denise Merrill

Board, Commission, Committee or Council	Enabling Authority*	Reported As:	Mailing Address	Telephone	Notes
Municipal Solid Waste Recycling Program Advisory Council	CGS 22a-241(c)	Defunct	c/o DEEP Bureau of Materials Management & Compliance Assurance 79 Elm St Hartford CT 06106	(860) 424-3021	
Natural Area Preserves Advisory Committee	CGS 26-314	Currently Inactive	c/o DEEP - Bureau of Natural Resources, Inland Fisheries Attn: Nancy Murray 79 Elm St Hartford CT 06106-5127	(260) 424-3589	
Naugatuck Valley Loan Fund Advisory Committee		Defunct	c/o DECD Attn: David Raccio 505 Hudson St. Hartford CT 06106		Cannot determine enabling statute/order for this entity.
New Haven Harbor, Board of Commissioners for	CGS 13b-51 and SA approved 6/27/1872	Defunct	c/o Robert S. Karecki New Haven Terminal, Inc 100 Waterfront St New Haven CT 06534	(203) 410-5085	Determination made 12/6/2011 to code as defunct per information provided by former chairman and Department of Transportation.
Progress Council, Connecticut	CGS 4-67r	Currently Inactive	c/o Secretary, OPM 450 Capitol Ave Hartford CT 06134-1441	(860) 418-6500	

* Abbreviations for “Enabling Authority” column are as follows: CFR = *Code of Federal Regulations*; CGS = *Connecticut General Statutes*; Exec. Order = Executive Order of the Governor; HR = House Resolution (U.S. Congress); PA = Public Act of the Connecticut General Assembly; SA = Special Act of the Connecticut General Assembly; USC = *United States Code*.

See page 6 for information about access to enabling authority text.

With the exception of the “Notes” added by the Office of the Secretary of the State, data in this table was submitted by the reporting boards and commissions between September and December 2011

BOARDS AND COMMISSIONS REPORTED AS DEFUNCT, INACTIVE, NOT YET ORGANIZED, OR OF UNKNOWN STATUS
Gender and Racial Composition of Connecticut State Boards and Commissions
2011 Report

Compiled by the Office of Secretary of the State Denise Merrill

Board, Commission, Committee or Council	Enabling Authority*	Reported As:	Mailing Address	Telephone	Notes
Residential Water-Saving Advisory Board	CGS 25-32i	Defunct	c/o Commissioner, DPH 410 Capitol Ave Hartford CT 06134		
School Building Projects Advisory Council	PA 11-51, section 132	Not yet organized	c/o Commissioner of Construction Services 165 Capitol Ave Hartford CT 06106	(860) 713-5379	
Senior Executive Service Board	CGS 5-236(d)	Currently Inactive	c/o Commissioner, DAS 165 Capitol Ave Hartford CT 06106		
Sex Offender Risk Assessment Board	CGS 54-259a	Currently Inactive	c/o Commissioner, DOC 24 Wolcott Hill Rd Wethersfield CT 06109	(860) 240-0533	
Small Business Advisory Council	Exec. Order 7b (Rowland)	Defunct	c/o Commissioner, DECD 505 Hudson Street Hartford CT 06106	(860) 270-8150	Gov Rell executive order 24 (2009) repeals Rowland Exec. Order 7-A, not 7-B Name changed from Governor's Small Business Advisory Council to Small Business Advisory Council by Exec. Order 7b
Spinal Cord Injury Research Board	PA 01-109	Defunct	c/o Hilary C. Onyiuke MD UConn Department of Surgery 263 Farmington Ave Farmington CT 06030-3955	(860) 679-3533	

* Abbreviations for "Enabling Authority" column are as follows: CFR = *Code of Federal Regulations*; CGS = *Connecticut General Statutes*; Exec. Order = Executive Order of the Governor; HR = House Resolution (U.S. Congress); PA = Public Act of the Connecticut General Assembly; SA = Special Act of the Connecticut General Assembly; USC = *United States Code*.

See page 6 for information about access to enabling authority text.

With the exception of the "Notes" added by the Office of the Secretary of the State, data in this table was submitted by the reporting boards and commissions between September and December 2011

BOARDS AND COMMISSIONS REPORTED AS DEFUNCT, INACTIVE, NOT YET ORGANIZED, OR OF UNKNOWN STATUS
Gender and Racial Composition of Connecticut State Boards and Commissions
2011 Report

Compiled by the Office of Secretary of the State Denise Merrill

Board, Commission, Committee or Council	Enabling Authority*	Reported As:	Mailing Address	Telephone	Notes
State-Assisted Housing Sustainability Advisory Committee	CGS 8-37zz	Defunct	c/o DECD, Attn. Frances Messina 505 Hudson St Hartford CT 06106-7106	(860) 270-8255	
Technology Advisory Committee	CGS 4d-13	Not yet organized	c/o Commissioner, DAS 165 Capitol Ave Hartford CT 06106	(860) 622-2419	
Veterans' Affairs, Board of Trustees for the Dept. of	CGS 27-102n	Currently Inactive	c/o Commissioner, Dept of Veterans' Affairs 287 West St Rocky Hill CT 06067	(860) 616-3603	
Victim Advocate, Advisory Committee to the Office of the	PA 11-48, Section 68	Not yet organized	c/o Office of the Victim Advocate 505 Hudson Street Hartford CT 06106		Formerly authorized by CGS 46-13f
Women, Infants and Children Advisory Council	CGS 19a-59c	Currently Inactive	c/o Commissioner, DPH 410 Capitol Ave Hartford CT 06106	(860) 509-7836	

Enabling Authority Text

An “enabling authority” is a law or executive order that creates a board or commission. The text of the law or executive order will generally identify appointing authorities, specify the number of board or commission members, and list required qualifications for membership. The laws and executive orders creating most of the boards and commissions listed in this table can be found on the Internet at the links described below. The links were current as of May 10, 2012.

* Abbreviations for “Enabling Authority” column are as follows: CFR = *Code of Federal Regulations*; CGS = *Connecticut General Statutes*; Exec. Order = Executive Order of the Governor; HR = House Resolution (U.S. Congress); PA = Public Act of the Connecticut General Assembly; SA = Special Act of the Connecticut General Assembly; USC = *United States Code*.

See page 6 for information about access to enabling authority text.

With the exception of the “Notes” added by the Office of the Secretary of the State, data in this table was submitted by the reporting boards and commissions between September and December 2011

BOARDS AND COMMISSIONS REPORTED AS DEFUNCT, INACTIVE, NOT YET ORGANIZED, OR OF UNKNOWN STATUS
Gender and Racial Composition of Connecticut State Boards and Commissions
2011 Report

Compiled by the Office of Secretary of the State Denise Merrill

Text of the *Connecticut General Statutes* (CGS), the *Connecticut Public Acts* (PA) from 1988 to date, and the *Connecticut Special Acts* (SA) from 1988 to date are available on the web site of the Connecticut General Assembly at <http://www.cga.ct.gov/>

Executive Orders of Governor Rell are available on the Governor's archived web site at <http://www.ct.gov/governorrell/>

Executive Orders of Governor Rowland are available on the Governor's archived web site at <http://www.ct.gov/governorowland/>

Executive Orders of Governor Malloy are available on the Governor's web site at <http://www.governor.ct.gov/malloy/cwp/view.asp?a=11&Q=470854>

U.S. Congress *House Resolutions* (HR) are available through the Library of Congress web site at <http://thomas.loc.gov/>

* Abbreviations for "Enabling Authority" column are as follows: CFR = *Code of Federal Regulations*; CGS = *Connecticut General Statutes*; Exec. Order = Executive Order of the Governor; HR = House Resolution (U.S. Congress); PA = Public Act of the Connecticut General Assembly; SA = Special Act of the Connecticut General Assembly; USC = *United States Code*.

See page 6 for information about access to enabling authority text.

With the exception of the "Notes" added by the Office of the Secretary of the State, data in this table was submitted by the reporting boards and commissions between September and December 2011

Appendix E

Table of Non- or Late-Responding Boards and Commissions

NON- AND LATE-RESPONDING BOARDS AND COMMISSIONS
Gender and Racial Composition of Connecticut State Boards and Commissions
2011 Report

Compiled by the Office of Secretary of the State Denise Merrill

Board, Commission, Committee or Council	Enabling Authority*	Last Report Received	Notes
Architectural Licensing Board	CGS 20-289	1/27/2012	c/o DCP 165 Capitol Ave. Hartford CT 06106
Behavioral Health Partnership Oversight Council	CGS 17a-22j		c/o Public Health Committee Legislative Office Building Room 3000 Hartford CT 06106
Center for Real Estate & Urban Economic Studies, Advisory Committee	CGS 10a-124	9/11/2009	c/o John Clap, Ph.D, Director UConn School of Business, Center for Real Estate 2100 Hillside Rd, Unit 1041 Storrs CT 06269-1041
Community Antenna Television Advisory Council, State-Wide	CGS 16-331ee	11/20/2009	c/o PURA, Cable Unit Ten Franklin Sq New Britain CT 06051
Connecticut Competitiveness Council	CGS 32-730		c/o Governor's Office State Capitol, Room 200 210 Capitol Ave Hartford CT 06106
Connecticut Equestrian Center Corporation, Board of Directors	SA 96-14, SA 97-7	9/8/2003	183 Windsor Ave Windsor CT 06095
Connecticut Homecare Option Program for the Elderly, Advisory Committee	CGS 3-123aa		c/o State Comptroller 55 Elm St Hartford CT 06106
Connecticut State University System, Board of Trustees for the	CGS 10a-88	1/28/2010	Attn: Erin Fitzgerald 39 Woodland St. Hartford CT 06105
Connecticut-Israel Exchange Commission	CGS 32-180	2/26/2010	c/o Sandra L. Elias, Esq. 64 Old Quarry Rd Woodbridge CT 06525
Consulting & Research Projects Compliance Monitoring Committee, CSU	CGS 1-84(r)(3)	1/28/2010	c/o CSU Board of Trustees Attn: Erin Fitzgerald 39 Woodland St. Hartford CT 06105-2337
Consulting & Research Projects Compliance Monitoring Committee, Community Colleges	CGS 1-84(r)(3)	9/11/2009	c/o Board of Trustees of Community-Technical Colleges 61 Woodland St Hartford CT 06105

* Abbreviations for “Enabling Authority” column are as follows: CFR = *Code of Federal Regulations*; CGS = *Connecticut General Statutes*; Exec. Order = Executive Order of the Governor; HR = House Resolution (U.S. Congress); PA = Public Act of the Connecticut General Assembly; SA = Special Act of the Connecticut General Assembly; USC = *United States Code*.

See page 4 for information about access to enabling authority text.

NON- AND LATE-RESPONDING BOARDS AND COMMISSIONS
Gender and Racial Composition of Connecticut State Boards and Commissions
2011 Report

Compiled by the Office of Secretary of the State Denise Merrill

Board, Commission, Committee or Council	Enabling Authority*	Last Report Received	Notes
Criminal Justice Policy Advisory Commission	CGS 18-87j	10/21/2009	c/o OPM, Justice Planning 450 Capitol Ave. Hartford CT 06134-1441
Educational Technology, Commission for	CGS 4d-80	9/15/2009	Karen Kaplan, Executive Director 165 Capitol Ave, Room 213 Hartford CT 06106
Elected State Officers and Judges, Compensation Commission for	CGS 2-9a	10/14/2005	Attn: Lewis B. Rome Rome McGuigan, P.C. 1 State St., 13th Floor Hartford CT 06103
Face of Connecticut Steering Committee	CGS 22a-27s	10/2/2009	c/o Commissioner, DEEP 79 Elm St Hartford CT 06106
Fuel Oil Conservation Board	PA 11-80, Sec. 49		c/o DEEP 79 Elm Street Hartford CT 06106-5127
Geospatial Information Systems Council	CGS 4d-90	9/28/2007	c/o DAS - BEST 101 East River Drive East Hartford CT 06108
Glass Work Board, Automotive and Flat	CGS 20-331(g)	2/2/2012	c/o DCP 165 Capitol Ave. Rm. 110 Hartford CT 06106
Health Information Technology and Exchange Advisory Committee	PA 09-232 (2009), sec. 76		c/o Commissioner, DPH 410 Capitol Ave Hartford CT 06134
Healthcare Advocate, Advisory Committee to the Office of	CGS 38a-1049	9/30/2009	c/o Office of the Healthcare Advocate PO Box 1543 Hartford CT 06144-1543
Heating, Piping, Cooling and Sheet Metal Work Board	CGS 20-331	12/18/2003	c/o DCP, Occupational & Professional Licensing 165 Capitol Ave Hartford CT 06106
Higher Education, Board of Regents for	PA 11-48, Section 211		61 Woodland St., 3rd Floor Hartford CT 06105
Home Inspection Licensing Board	CGS 20-490a(b)	9/30/2009	c/o DCP 165 Capitol Ave Hartford CT 06106

* Abbreviations for “Enabling Authority” column are as follows: CFR = *Code of Federal Regulations*; CGS = *Connecticut General Statutes*; Exec. Order = Executive Order of the Governor; HR = House Resolution (U.S. Congress); PA = Public Act of the Connecticut General Assembly; SA = Special Act of the Connecticut General Assembly; USC = *United States Code*.

See page 4 for information about access to enabling authority text.

NON- AND LATE-RESPONDING BOARDS AND COMMISSIONS
Gender and Racial Composition of Connecticut State Boards and Commissions
2011 Report

Compiled by the Office of Secretary of the State Denise Merrill

Board, Commission, Committee or Council	Enabling Authority*	Last Report Received	Notes
Indian Affairs Council	CGS 47-59b	10/19/2009	c/o DEEP, Commissioner's Office Attn: Indian Affairs Coordinator 79 Elm St. Hartford CT 06106-5127
International Trade Council, Connecticut	CGS 32-511	10/3/2007	c/o Commerce Committee State Capitol Building Rm 110 Hartford CT 06106
Landscape Architects, State Board of	CGS 20-368	9/30/2009	c/o DCP 165 Capitol Ave. Hartford CT 06106
Law Revision Commission, Connecticut	CGS 2-85, 2-86	11/12/2003	c/o Legislative Commissioners' Office Legislative Office Building, Room 5500 Hartford CT 06106-1591
Medical Assistance Program Oversight, Council on	CGS 17b-28, PA 11-44, Sec. 167	1/13/2012	c/o Joint Committee on Legislative Management Legislative Office Bldg Room 5100 Hartford CT 06106
Museum of Art Advisory Committee, State	CGS 10a-112g	2/8/2006	c/o William Benton Museum of Art Attn: Thomas Bruhn, Interim Director 245 Glenbrook Rd., U-2140 Storrs CT 06269-2140
Music Hall of Fame Committee, Connecticut	PA 07-220, Sec. 2, amended by PA 08-136		c/o James Koplik 251 Dogwood Lane Stamford CT 06903
Nursing Home Financial Advisory Committee	CGS 17b-339	9/22/2009	c/o Commissioner, DSS 25 Sigourney St. Hartford CT 06106
Nurturing Families Network Advisory Commission	CGS 17a-56a	10/30/2009	c/o Children's Trust Fund, Attn: Karen Foley-Schain 410 Capitol Avenue Hartford CT 06106

* Abbreviations for "Enabling Authority" column are as follows: CFR = *Code of Federal Regulations*; CGS = *Connecticut General Statutes*; Exec. Order = Executive Order of the Governor; HR = House Resolution (U.S. Congress); PA = Public Act of the Connecticut General Assembly; SA = Special Act of the Connecticut General Assembly; USC = *United States Code*.

See page 4 for information about access to enabling authority text.

NON- AND LATE-RESPONDING BOARDS AND COMMISSIONS
Gender and Racial Composition of Connecticut State Boards and Commissions
2011 Report

Compiled by the Office of Secretary of the State Denise Merrill

Board, Commission, Committee or Council	Enabling Authority*	Last Report Received	Notes
Plumbing and Piping Work Board	CGS 20-331	9/22/2003	c/o DCP, Occupational & Professional Licensing 165 Capitol Ave Hartford CT 06106
Professional Engineers and Land Surveyors, State Board of Examiners for	CGS 20-300	9/29/2005	c/o DCP, Professional Unit 165 Capitol Ave. Hartford CT 06106
Raymond E. Baldwin Museum of Conn. History & Heritage, Advisory Committee	CGS 11-6a(b)	11/22/2009	c/o Connecticut State Library Attn: Dean Nelson, Museum Administrator 231 Capiitol Ave. Hartford CT 06106
Real Estate Appraisal Commission, Connecticut	CGS 20-502		c/o DCP 165 Capitol Ave. Hartford CT 06106
River Protection Advisory Committee	CGS 25-102qq	9/28/2009	c/o DEEP Watershed Management Program, Sally Snyder 79 Elm St. Hartford CT 06106
Southwest Corridor Action Council	CGS 13b-16b	10/1/2003	c/o Co-Chairs, Transportation Committee Legislative Office Building, Rm 2300 Hartford CT 06106
Temporary Family Assistance and Employment Services Programs Council	CGS 17b-29	10/13/2009	c/o Co-Chairs, Human Services Committee Legislative Office Bldg, Room 2000 Hartford CT 06106
Veterans Hall of Fame Executive Committee, Connecticut	Exec. Order 5 (Rell)	10/22/2009	c/o Commissioner, Dept of Veterans' Affairs 287 West St Rocky Hill CT 06067

Enabling Authority Text

An “enabling authority” is a law or executive order that creates a board or commission. The text of the law or executive order will generally identify appointing authorities, specify the number of board

* Abbreviations for “Enabling Authority” column are as follows: CFR = *Code of Federal Regulations*; CGS = *Connecticut General Statutes*; Exec. Order = Executive Order of the Governor; HR = House Resolution (U.S. Congress); PA = Public Act of the Connecticut General Assembly; SA = Special Act of the Connecticut General Assembly; USC = *United States Code*.

See page 4 for information about access to enabling authority text.

NON- AND LATE-RESPONDING BOARDS AND COMMISSIONS
Gender and Racial Composition of Connecticut State Boards and Commissions
2011 Report

Compiled by the Office of Secretary of the State Denise Merrill

or commission members, and list required qualifications for membership. The laws and executive orders creating most of the boards and commissions listed in this table can be found on the Internet at the links described below. The links were current as of May 10, 2012.

Text of the *Connecticut General Statutes* (CGS), the *Connecticut Public Acts* (PA) from 1988 to date, and the *Connecticut Special Acts* (SA) from 1988 to date are available on the web site of the Connecticut General Assembly at <http://www.cga.ct.gov/>

Executive Orders of Governor Rell are available on the Governor's archived web site at <http://www.ct.gov/governorrell/>

Executive Orders of Governor Rowland are available on the Governor's archived web site at <http://www.ct.gov/governorrowland/>

Executive Orders of Governor Malloy are available on the Governor's web site at <http://www.governor.ct.gov/malloy/cwp/view.asp?a=11&Q=470854>

U.S. Congress *House Resolutions* (HR) are available through the Library of Congress web site at <http://thomas.loc.gov/>

The United States Code (USC) can be accessed through the U.S. Government Printing Office's FDSys, Federal Digital System web site at <http://www.gpo.gov/fdsys/browse/collectionUScode.action?collectionCode=USCODE>

The *United States Code of Federal Regulations* (CFR) is available through the U.S. Government Printing Office's FDSys, Federal Digital System web site at <http://www.gpo.gov/fdsys/browse/collectionCfr.action?collectionCode=CFR>

* Abbreviations for "Enabling Authority" column are as follows: CFR = *Code of Federal Regulations*; CGS = *Connecticut General Statutes*; Exec. Order = Executive Order of the Governor; HR = House Resolution (U.S. Congress); PA = Public Act of the Connecticut General Assembly; SA = Special Act of the Connecticut General Assembly; USC = *United States Code*.

See page 4 for information about access to enabling authority text.