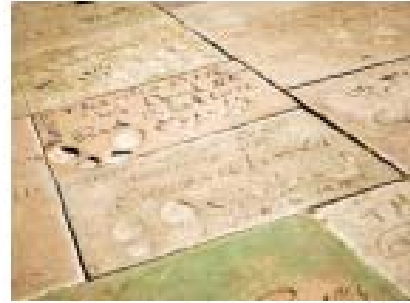


Common Ground: A Vision for the Swift Factory



Northeast NRZ Meeting
September 21, 2009

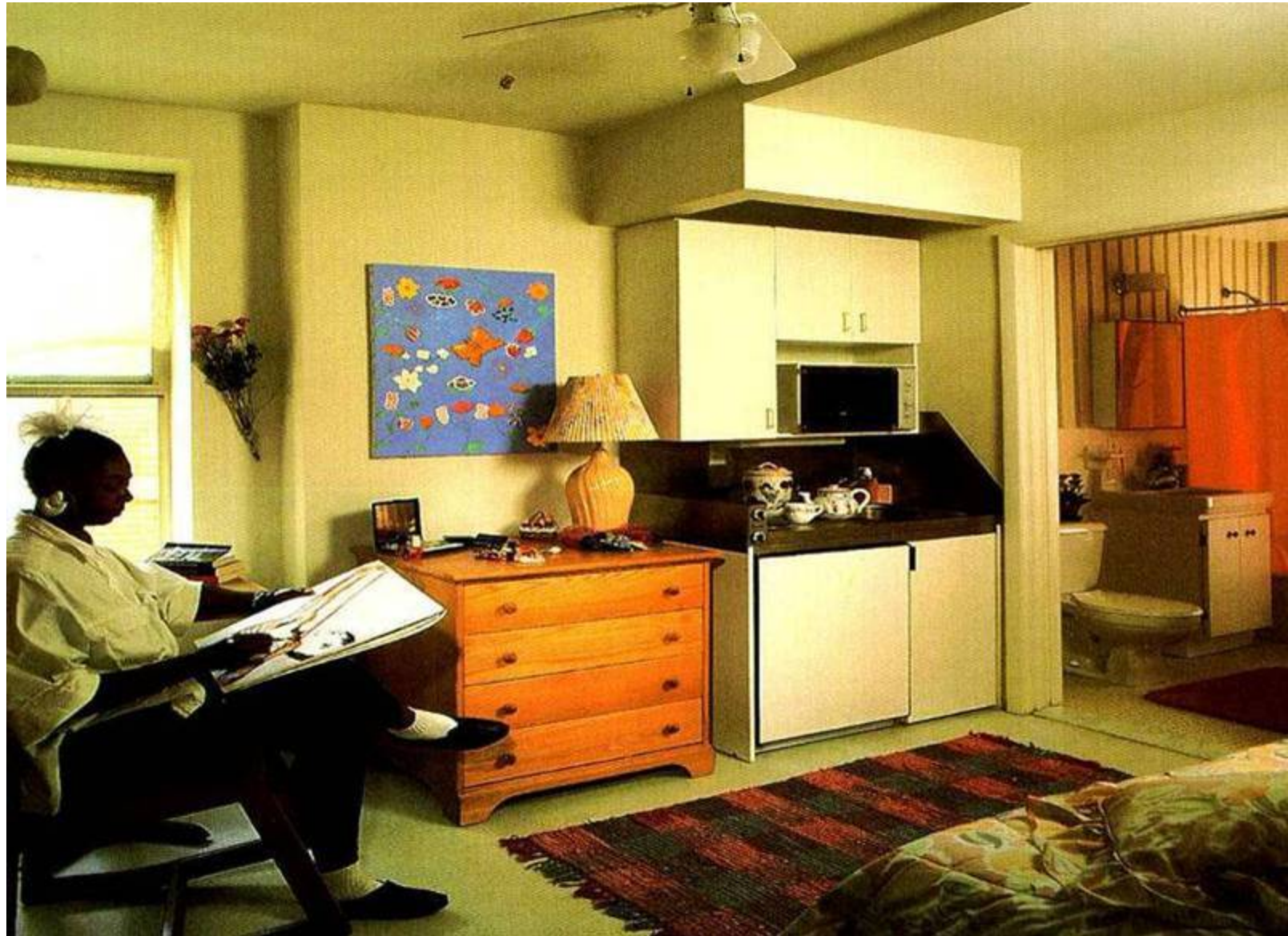
Common Ground

- Works with communities to solve challenging housing problems
- Award-winning not for profit developer/manager of mixed income, mixed use and historic properties
- Links affordable housing, jobs, health and personal support
- 19 years experience
- Over 3,000 affordable homes in operation or development























Swift Factory

Garden ♦ Westland

Swift Factory

Love Lane





Swift Factory Houses

Love Lane



Swift Factory

Swift Factory: A Vision for the Future

- Affordable housing for seniors and artists
- Green energy and design center
- Urban farm and food center
- Arts and performance space
- Home repair, homeownership and anti-foreclosure assistance
- Green jobs training
- Neighborhood gathering space

Wychwood Barns – Toronto

Farmers Market / Urban Greenhouse

Abandoned Factories



Sweet Water Farms - Milwaukee

Urban Fish & Vegetable Farm



Abandoned Factories

Next Steps:

- Identify resources to hold property for development
- Identify partners able to contribute skills and resources
- Create project plan, development budget, timetable
- Secure commitment of development resources
- Acquire property
- Fundraise
- Partners begin work on phases of project