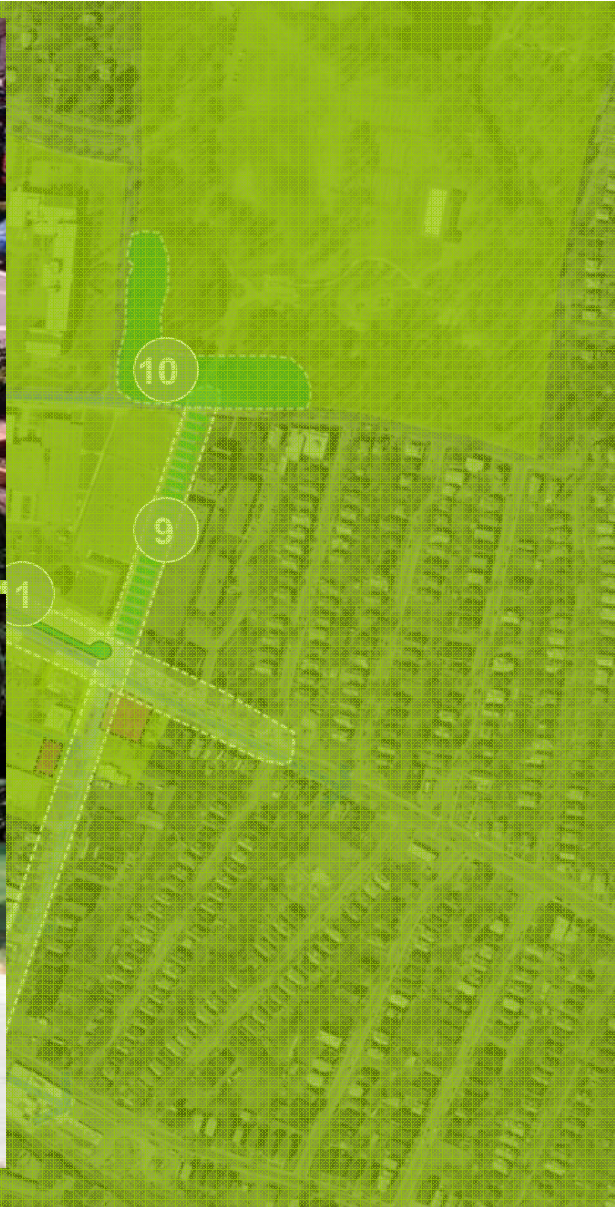
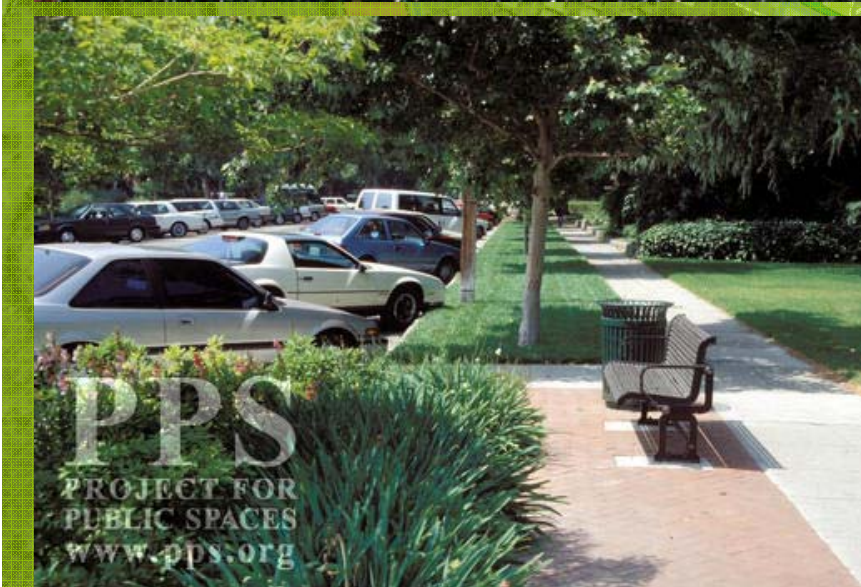
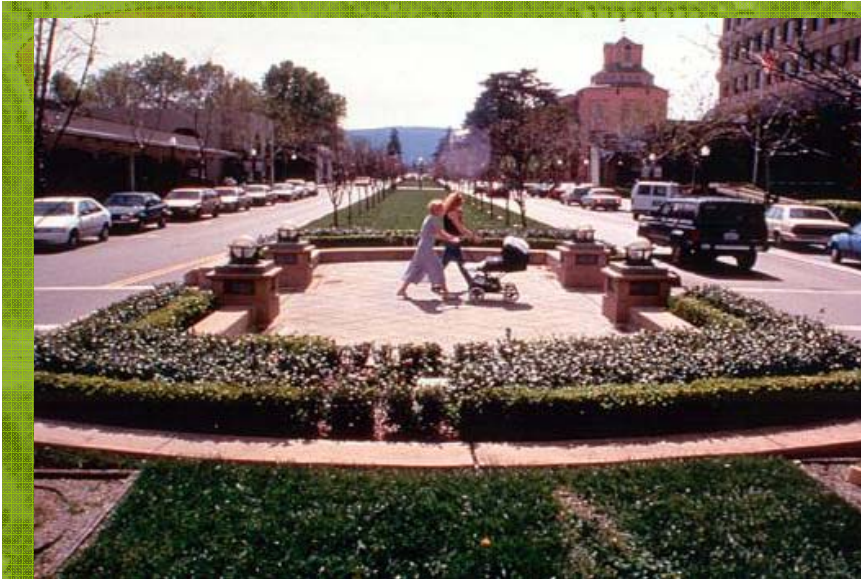


UPPER ALBANY



9. Woodland Street as shared street – for festivals, markets to celebrate the ethnic specialty
10. Improve visibility and access to Keney Park.

UPPER ALBANY



9. Woodland Street as shared street – for festivals, markets to celebrate the ethnic specialty
10. Improve visibility and access to Keney Park.
11. Signature landscape piece – town green quality. Create angle parking

UPPER ALBANY



12. Bolster civic uses and create a campus environment North of Albany Avenue



ASYLUM & FARMINGTON

Assets

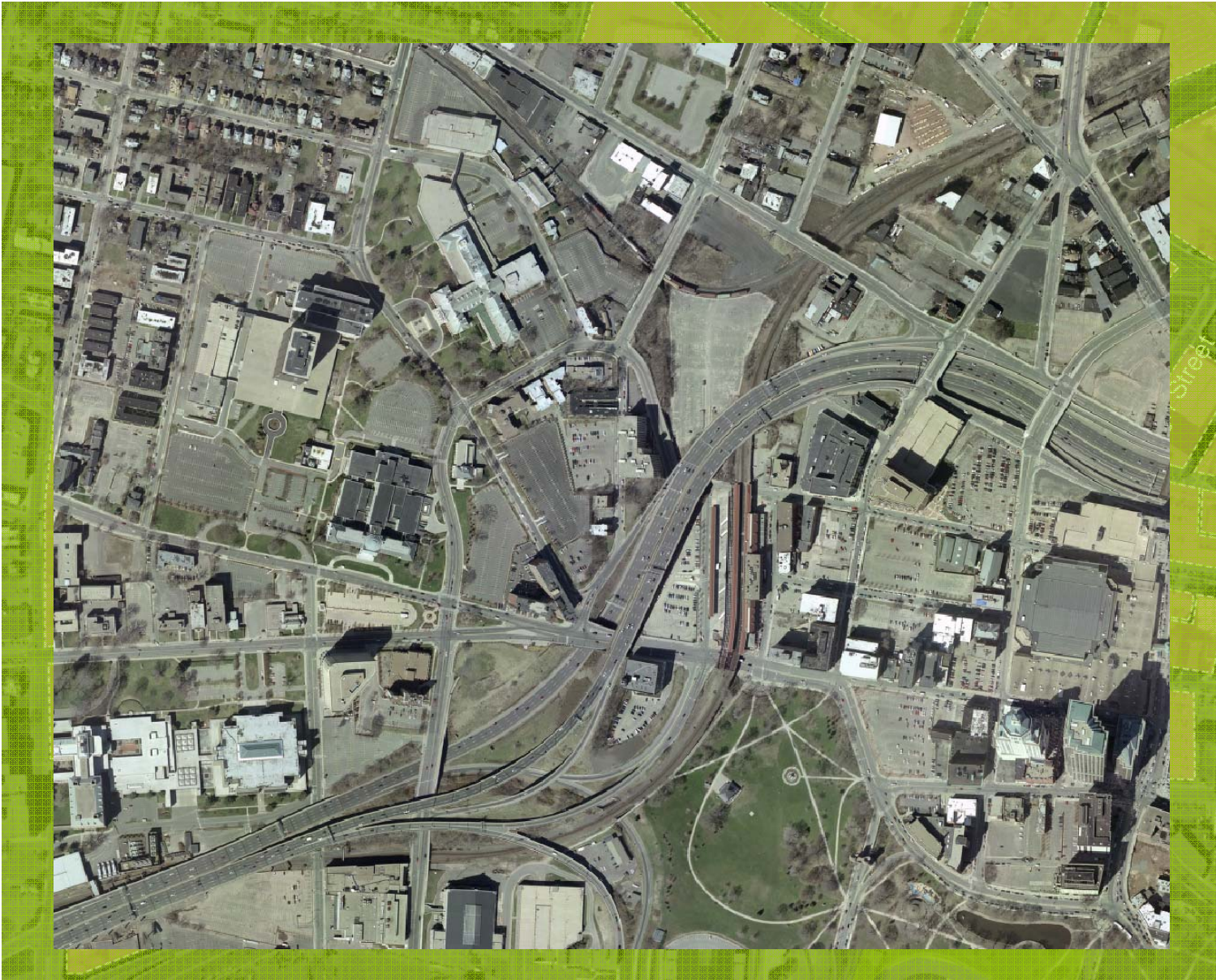




Stitching Asylum / Farmington to Downtown & West Hartford center and laying out – and absorbing significant regional demand for -- high-end office, retail, hotel and housing development. Work with stakeholders such as AETNA, and the Hartford as well as the Community in developing a vibrant mixed-use district that is tied to Union Station, Asylum Hill and Bushnell Park.

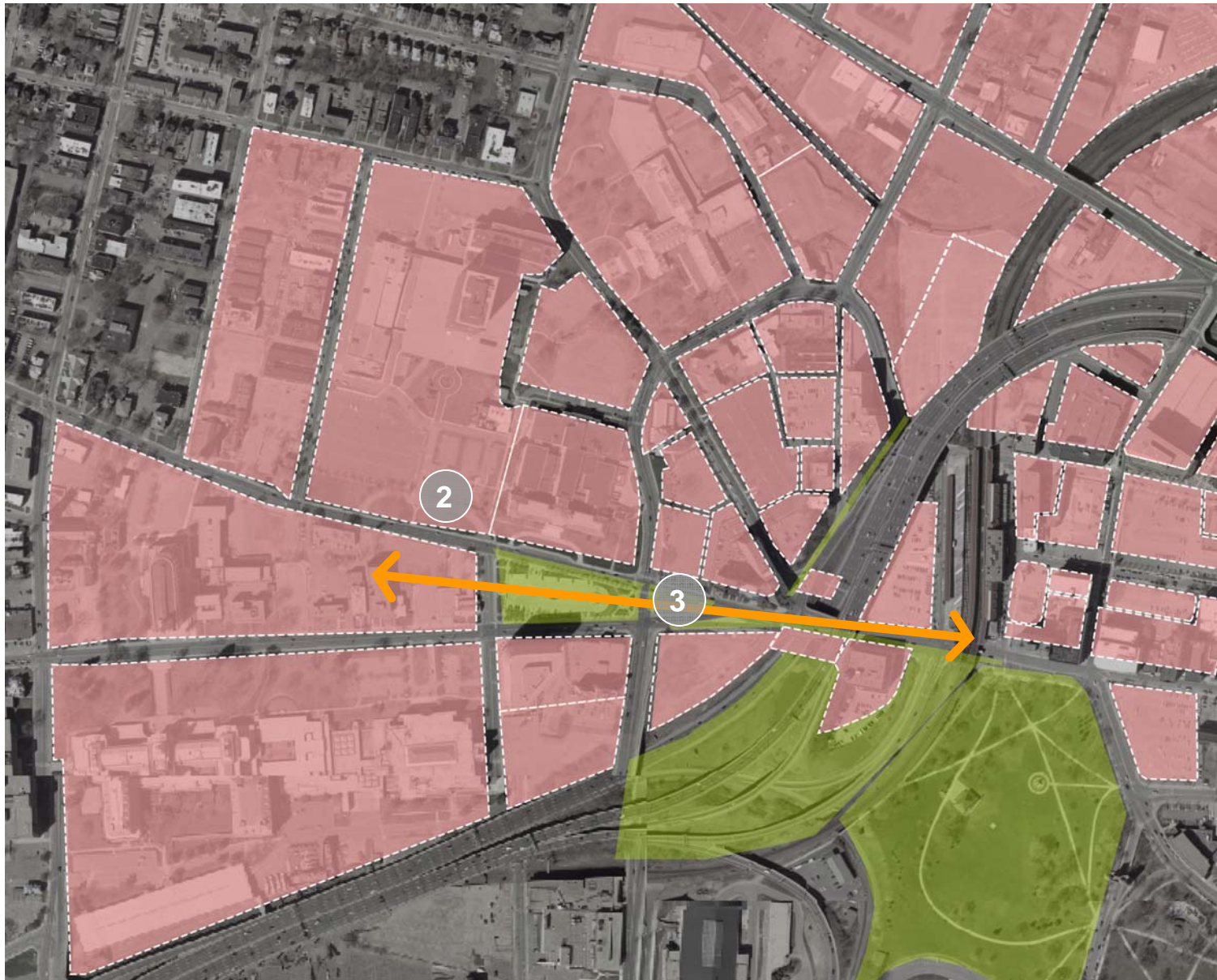


ASYLUM/ FARMINGTON



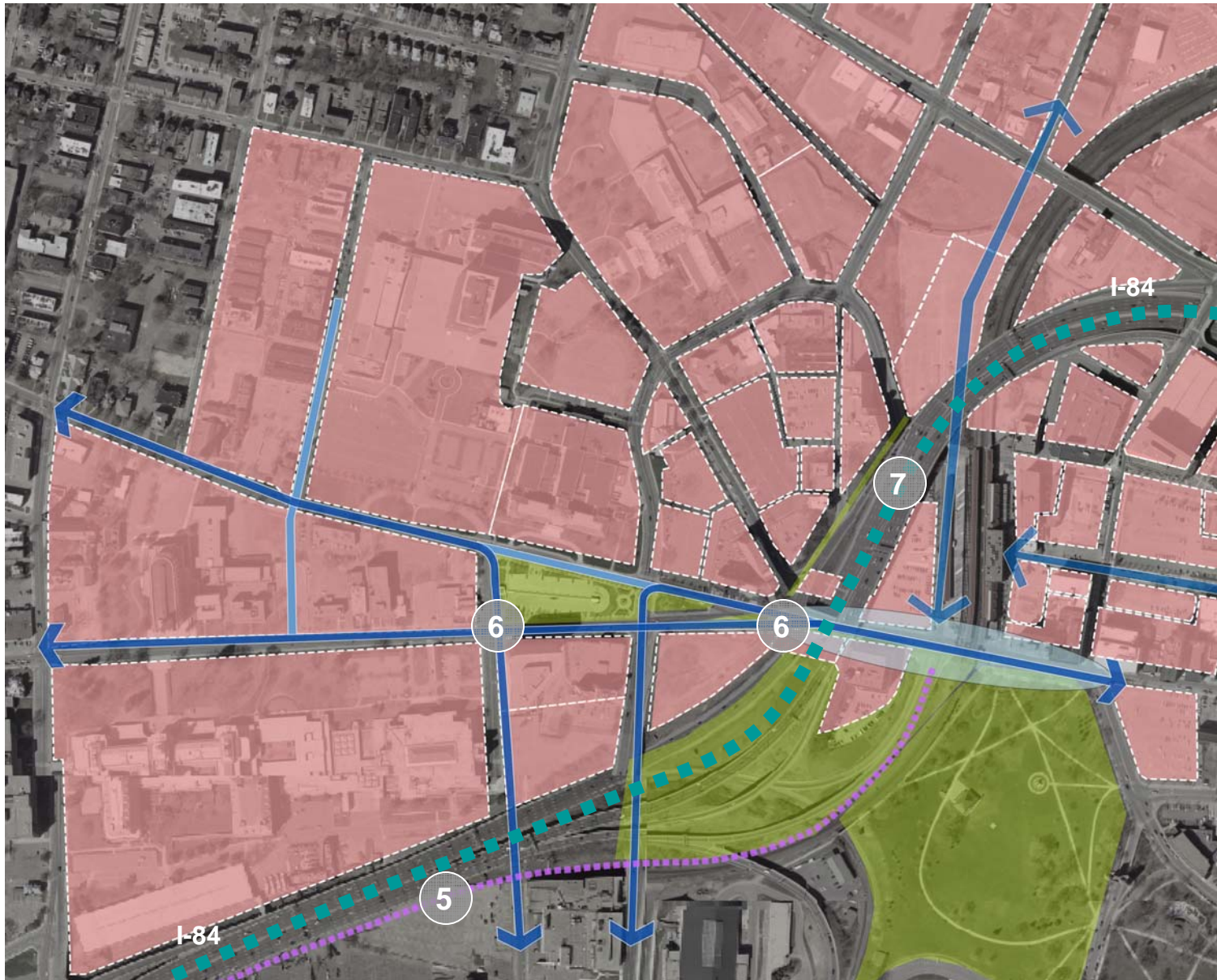
1. Potential mixed use infill development opportunities

ASYLUM/ FARMINGTON



1. Potential mixed use infill development opportunities
2. Significant daytime population: opportunity to create retail and restaurant opportunities
3. Link Asylum Hill office center with Union Station, Downtown and Bushnell Park
4. Explore sites for relocating the Hartford Civic Arena to the Union Station Area

ASYLUM/ FARMINGTON



5. Carefully integrate the proposed New Britain bus-way route
6. Rationalize traffic patterns for pedestrian and vehicular safety
7. Leverage I-84 Reconstruction opportunity

ASYLUM/ FARMINGTON

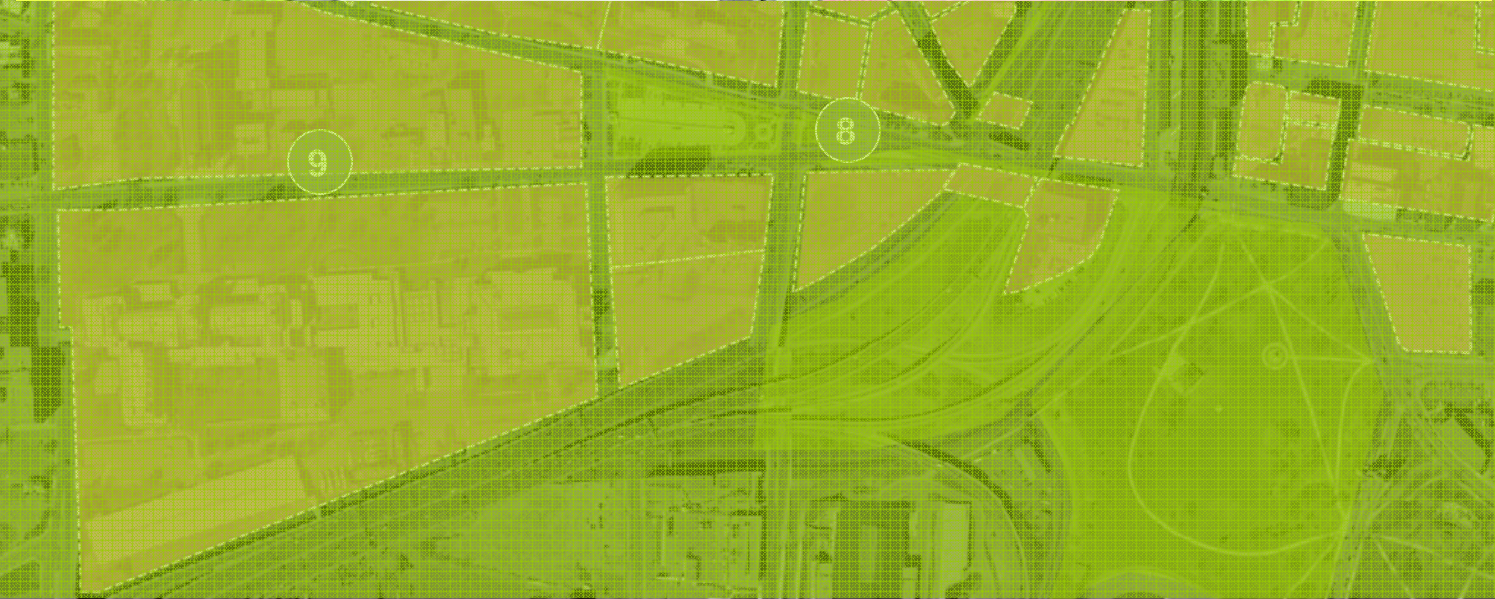


8. Create a pedestrian friendly Plaza type environment with retail around.

ASYLUM/ FARMINGTON



8. Create a pedestrian friendly Plaza type environment with retail around.
9. Farmington avenue Streetscape improvements.



ASYLUM/ FARMINGTON



8. Create a pedestrian friendly Plaza type environment with retail around.
9. Farmington avenue Streetscape improvements.
10. Pedestrian connection to Bushnell Park/ Downtown
—
Ponte Vecchio idea

ASYLUM/ FARMINGTON



8. Create a pedestrian friendly Plaza type environment with retail around.
9. Farmington avenue Streetscape improvements.
10. Pedestrian connection to Bushnell Park/ Downtown –
Ponte Vecchio idea
11. Provide sports/ recreation type facilities (Chelsea Piers) as a major amenity for employees and residents.



SOUTH GREEN

Learning Corridor



Park Street



Main Street Downtown



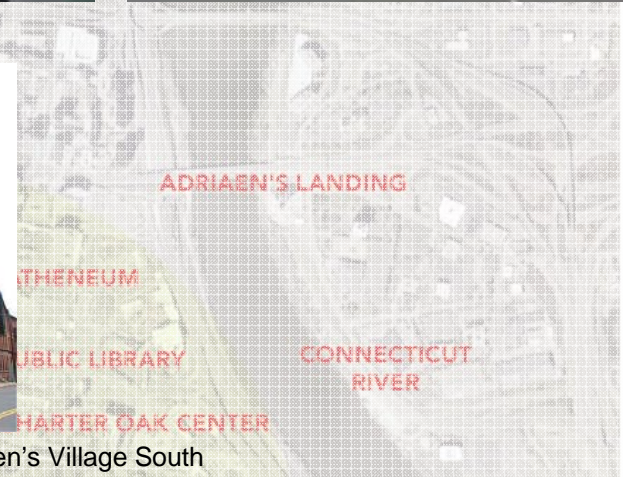
Capital Area



Colt Park



Colt Gateway



Barnard Park



Congress St.



Children's Village South





A high-image, multi-ethnic meeting place, to spur and link further investment on Park Street. Work with the Park Street merchants, Harford Hospital, South Downtown, the Colt Gateway, and Charter Oak in making a special place at this key entry to Downtown and link to the Southside neighborhoods.



SOUTH GREEN



1. Promote eateries and specialized retail on the west side of Maple Avenue fronting the Green
2. Plaza Mayor could stimulate future developments of the trident with a retail focus on Main Street
3. Support Harford Hospital's move to connect to South Green via Jefferson.
4. Significant daytime population: opportunity to create retail and restaurant opportunities

SOUTH GREEN



- 5. Rationalize traffic patterns for pedestrian and vehicular safety
- 6. Create attractive on street parking opportunities