



# CITY OF HARTFORD Police Department

A large, faint, light-gray seal of the City of Hartford is centered in the background. It features an eagle with wings spread, a shield with a deer and a swan, and a banner at the bottom with the Latin motto "POST NUBILA PHOEBUS".

5 Year  
Part I Crime Summary  
January 1st—December 2nd  
2002—2006

**Daryl K. Roberts**  
Chief of Police



# HARTFORD POLICE DEPARTMENT

## CRIME SUMMARY

### PART 1 CRIME STATISTICS\*



Chief Daryl K. Roberts

**YEAR TO DATE**

CITY-WIDE

Reporting Period: JAN. 1 - DEC 2

	5 yr. avg.	2002	2003	2004	2005	2006	Per Cent Change from 2005	Per Cent Change from 2004	Per Cent Change from 5 yr. avg.
<b>MURDER</b>	26	22	44	17	22	22	+0.0%	+29.4%	-16.2%
<b>RAPE</b>	65	71	75	63	63	53	-15.9%	-15.9%	-18.5%
<b>ROBBERY</b>	785	803	954	849	620	697	+12.4%	-17.9%	-11.2%
<b>AGG ASSAULT</b>	602	535	643	541	620	669	+7.9%	+23.7%	+11.2%
<b>BURGLARY</b>	1342	1466	1237	1626	1317	1066	-19.1%	-34.4%	-20.6%
<b>LARCENY</b>	5701	5258	5632	6156	5881	5578	-5.2%	-9.4%	-2.2%
<b>AUTO THEFT*</b>	1999	2033	2216	2434	1729	1585	-8.3%	-34.9%	-20.7%
<b>TOTALS</b>	10519	10188	10801	11686	10252	9670	-5.7%	-17.3%	-8.1%

\*Crime statistics are from January 1st - December 2nd for the indicated year.

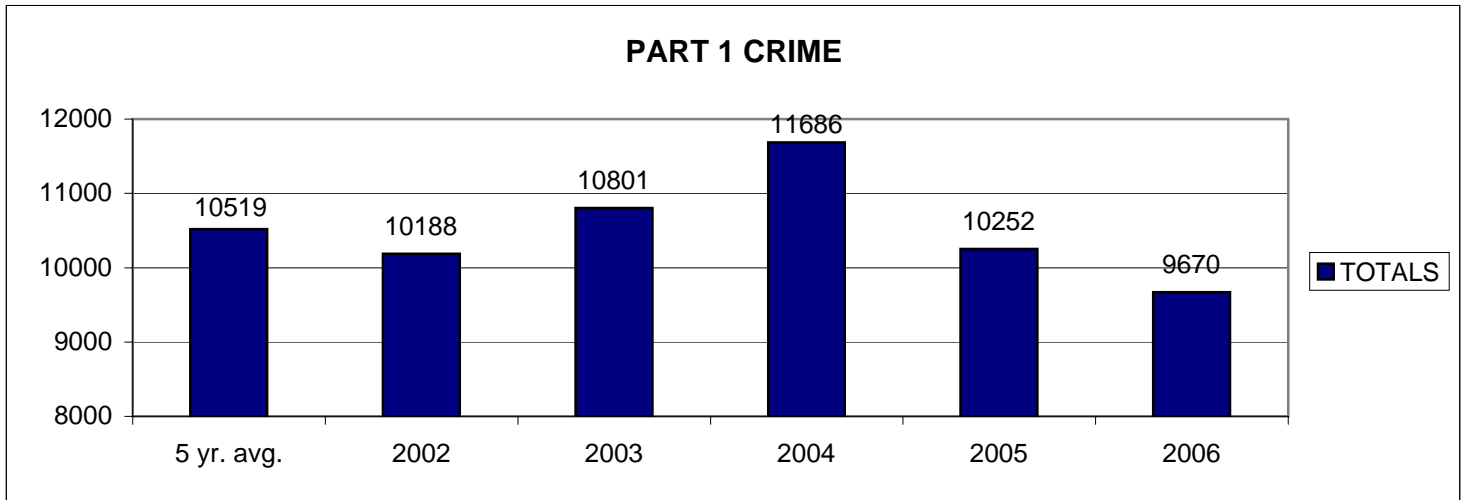
### GUNS

#### Recovery/Arrests\*\*

<b>Guns Recovered</b>	345	313	265	322	349	474	+35.8%	+47.2%	+37.6%
<b>Gun Arrests</b>	151	128	125	149	159	195	+22.6%	+30.9%	+29.0%

\*\*Gun statistics for 2002-2005 are from the complete year. 2006 statistics are for January 1st - December 11th.

### PART 1 CRIME



Prepared by:

Hartford Police Department  
Crime Analysis Unit



# Hartford Police Department

## Part 1 Crime

### 25 Year Analysis

#### 1981-2006



Year	Population	Sworn Officers	Murder	Rape	Robbery	Aggravated Assault	Burglary	Larceny	Motor Vehicle Theft	Index Total
2006*	124,356	411	24	44	785	754	1,122	5,983	1,724	10,436
2005	124,356	416	25	57	689	683	1,401	6,252	1,862	10,969
2004	124,356	403	17	65	890	578	1,735	6,591	2,634	12,510
2003	124,356	408	44	64	1,024	679	1,326	6,043	2,388	11,568
2002	123,540	397	25	59	928	571	1,564	5,651	2,145	10,943
2001	122,274	427	25	64	889	615	1,569	5,798	1,829	10,789
2000	121,578	432	17	53	862	558	1,630	6,001	2,099	11,220
1999	131,843	462	21	52	765	647	1,542	5,830	1,404	10,261
1998	132,681	456	25	62	846	718	1,762	6,932	1,610	11,955
1997	124,115	450	21	47	860	695	1,652	7,048	1,621	11,944
1996	124,223	461	20	94	1,089	929	2,072	7,036	1,948	13,188
1995	124,195	443	33	112	1,278	1,176	3,137	8,278	2,559	16,573
1994	131,833	462	55	97	1,549	1,461	3,128	7,579	2,703	16,572
1993	131,914	426	30	99	1,243	1,470	3,628	8,824	2,633	17,927
1992	139,477	443	13	140	1,499	1,497	4,465	10,068	3,640	21,322
1991	139,903	453	24	181	1,607	1,764	4,690	9,710	3,259	21,235
1990	139,739	470	19	160	1,727	2,201	5,281	9,244	2,896	21,528
1989	131,544	467	30	167	1,600	1,981	5,016	9,318	2,893	21,005
1988	141,180	483	37	160	1,328	1,450	4,947	9,842	2,525	20,289
1987	138,945	494	24	124	1,433	1,380	5,765	11,422	2,706	22,854
1986	137,217	477	28	104	1,675	1,162	4,661	10,259	1,998	19,887
1985	136,572	501	12	104	1,530	1,079	4,668	9,018	1,473	17,884
1984	136,932	497	22	108	1,565	957	4,412	9,523	1,584	18,171
1983	138,259	457	16	79	1,667	1,016	4,531	9,444	2,234	18,987
1982	138,865	439	35	128	2,041	1,182	5,408	11,442	3,276	23,512
1981	137,940	369	32	94	2,482	1,387	6,545	10,250	3,942	24,732

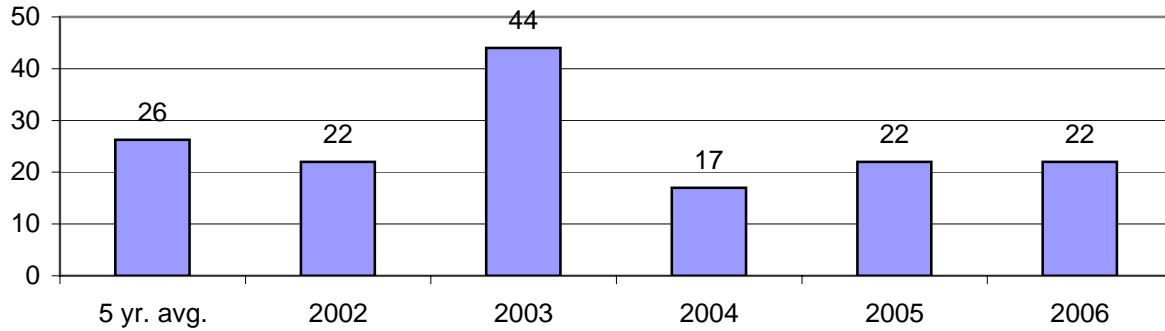
<b>High</b>	55 (1994)	181 (1991)	2482 (1981)	2201 (1990)	6545 (1981)	11442 (1982)	3942 (1981)	24732 (1981)
<b>Low</b>	12 (1985)	47 (1997)	689 (2005)	558 (2000)	1326 (2003)	5651 (2002)	1404 (1999)	10261 (1999)
<b>Average</b>	26	97	1,302	1,100	3,371	8,207	2,369	16,472

\* 2006 numbers are projected based on recent statistical data

## MURDER

						<b>Per Cent Change</b>	<u>Per Cent Change</u>	<u>Per Cent Change</u>
5 yr. avg.	2002	2003	2004	2005	2006	from 2005	from 2004	from 5 yr. avg.
26	22	44	17	<b>22</b>	<b>22</b>	<b>+0.0%</b>	<b>+29.4%</b>	<b>-16.2%</b>

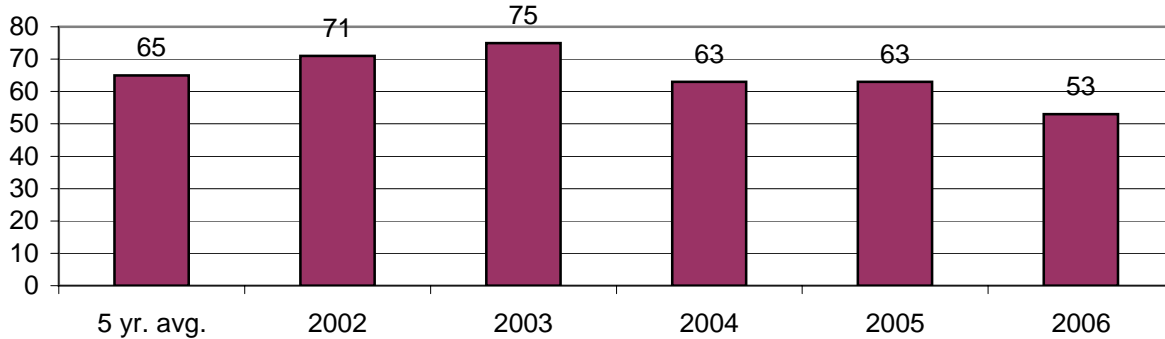
### MURDER



## RAPE

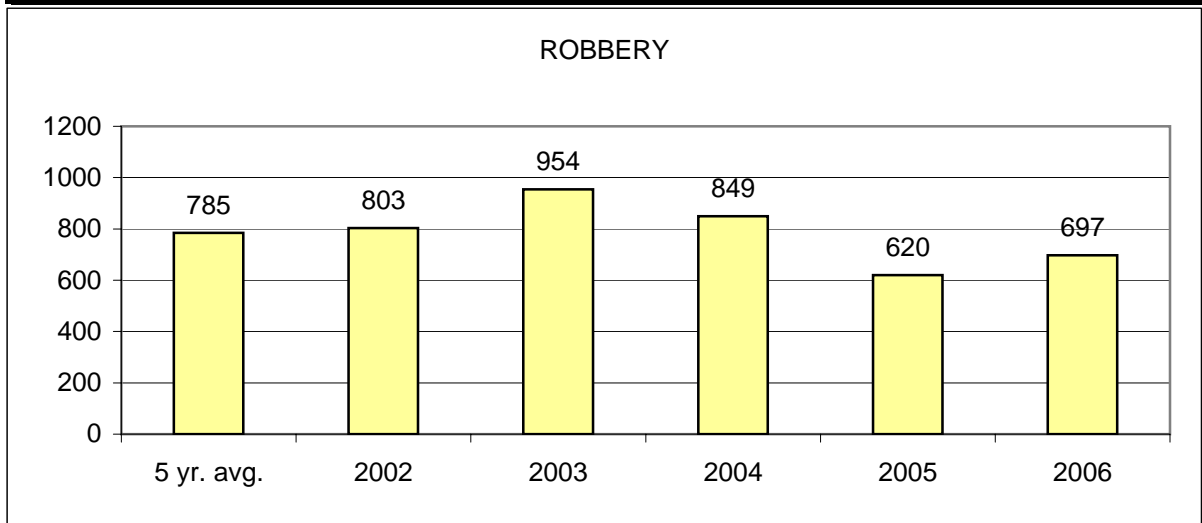
						<b>Per Cent Change</b>	<u>Per Cent Change</u>	<u>Per Cent Change</u>
5 yr. avg.	2002	2003	2004	2005	2006	from 2005	from 2004	from 5 yr. avg.
65	71	75	63	<b>63</b>	<b>53</b>	<b>-15.9%</b>	<b>-15.9%</b>	<b>-18.5%</b>

### RAPE



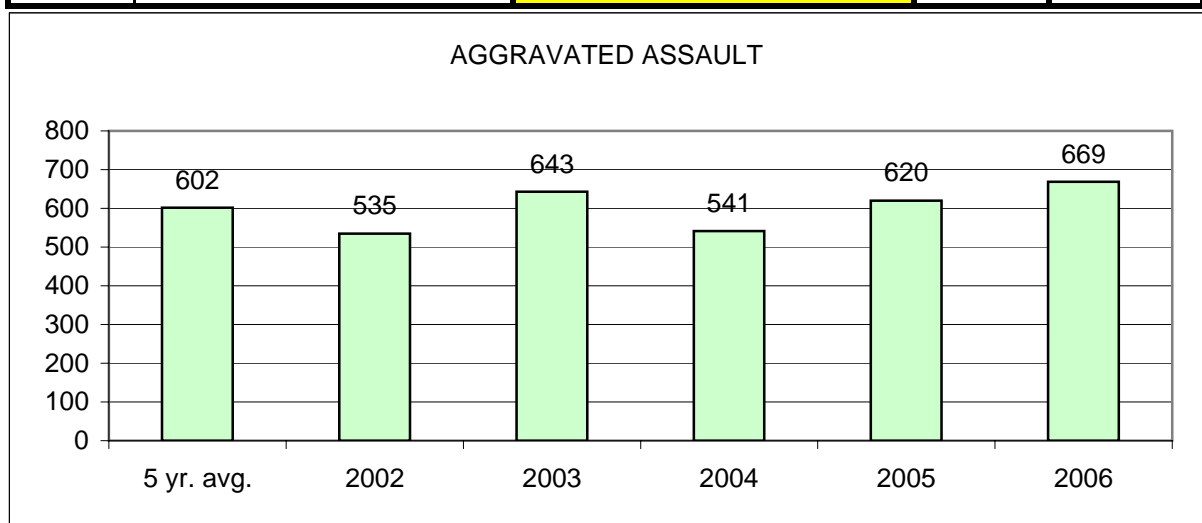
## ROBBERY

				Per Cent Change			Per Cent Change	Per Cent Change
5 yr. avg.	2002	2003	2004	2005	2006	from 2005	from 2004	from 5 yr. avg.
785	803	954	849	620	697	+12.4%	-17.9%	-11.2%



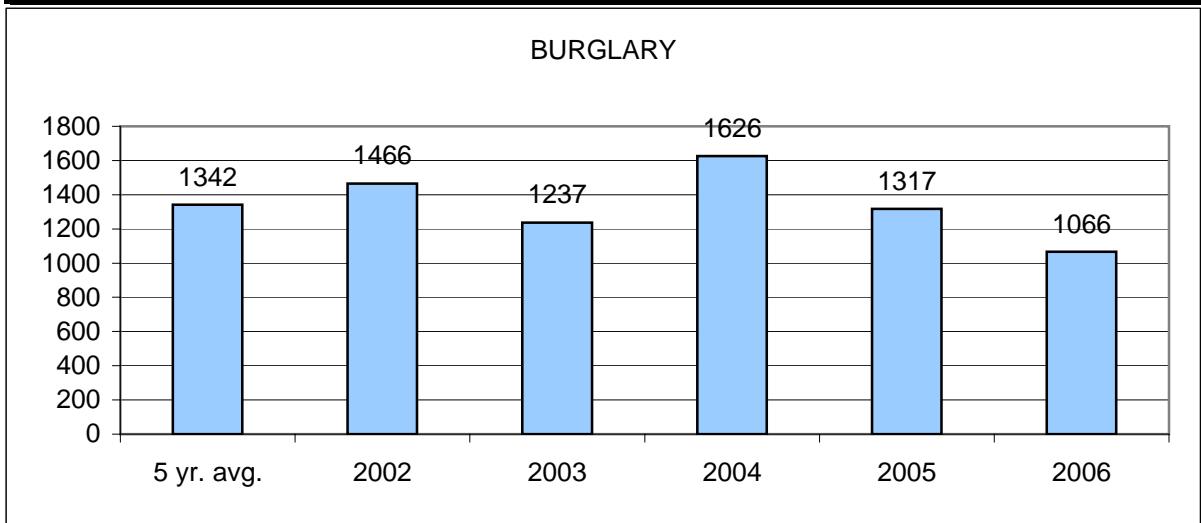
## AGGRAVATED ASSAULT

				Per Cent Change			Per Cent Change	Per Cent Change
5 yr. avg.	2002	2003	2004	2005	2006	from 2005	from 2004	from 5 yr. avg.
602	535	643	541	620	669	+7.9%	+23.7%	+11.2%



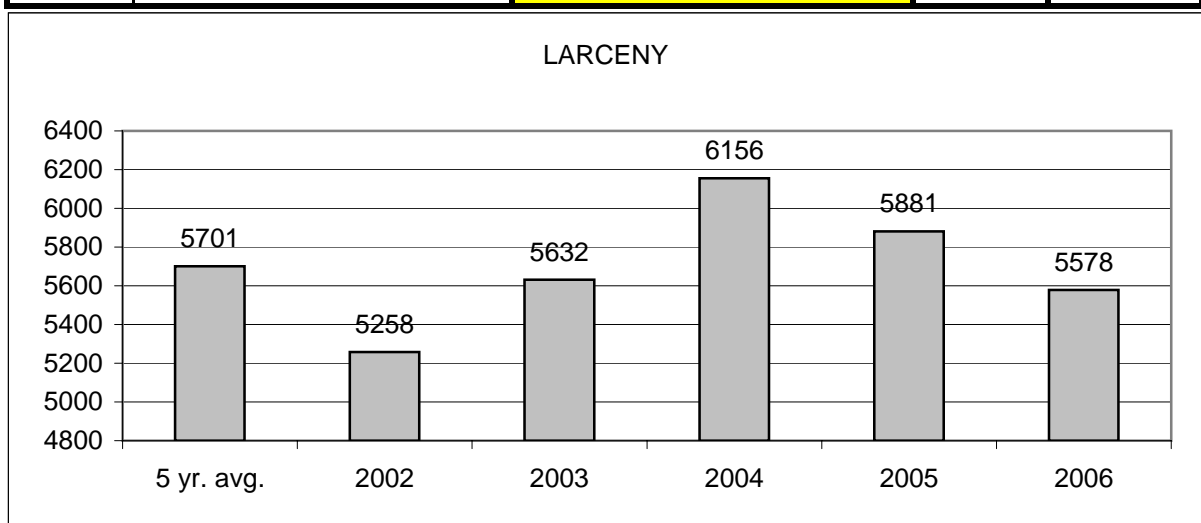
## BURGLARY

5 yr. avg.	2002	2003	2004	<b>Per Cent Change</b>			Per Cent Change	Per Cent Change
1342	1466	1237	1626	2005	2006	from 2005	from 2004	from 5 yr. avg.
				1317	1066	-19.1%	-34.4%	-20.6%



## LARCENY

5 yr. avg.	2002	2003	2004	<b>Per Cent Change</b>			Per Cent Change	Per Cent Change
5701	5258	5632	6156	2005	2006	from 2005	from 2004	from 5 yr. avg.
				5881	5578	-5.2%	-9.4%	-2.2%



## AUTO THEFT

				Per Cent Change		Per Cent Change	Per Cent Change
5 yr. avg.	2002	2003	2004	2005	2006	from 2005	from 5 yr. avg.
1999	2033	2216	2434	1729	1585	-8.3%	-34.9%

