



Education That Works For a Lifetime

Fall 2006 Credit Enrollment Report

~~~~~  
Mr. Dennis G. Jones & Dr. Corby A. Coperthwaite  
Office of Planning, Research and Assessment  
Board of Trustees  
Connecticut Community-Technical Colleges  
61 Woodland Street  
Hartford, Connecticut 06105

Phone: (860)244-7604  
Fax: (860)566-1308  
CCoperthwaite@commnet.edu

~~~~~

Contents

Fall 2006 Credit Enrollment Introduction	2
Headcount and FTE Enrollment History	3
Combined Fund FTE Enrollment – Fall 2005 & Fall 2006	4
General Fund FTE Enrollment – Fall 2005 & Fall 2006	5
Combined Fund Enrollment – Full-time/Part-time	6
General Fund Enrollment – Full-time/Part-time	7
Extension Fund Enrollment – Full-time/Part-time	8
Combined Fund Student Enrollment History	9
Combined Fund FTE Enrollment History	10
Combined Fund Enrollment by Ethnic Group	11
Enrollment History by Ethnicity	12
Black & Hispanic Enrollment History	13
Undergraduates at Public Institutions	14
Combined Fund Enrollment by Gender	15
Enrollment History by Gender	16
Combined Fund Age Distribution	17
Enrollment History by Age	19
Credit Enrollment by Program Area	20
Credit Enrollment History by Program Area	21
Credit Enrollment by Program Area and Gender	22
Credit Enrollment by Program Area and Ethnicity	23
Credit Enrollment by Associate Degree Program Area	24
Credit Enrollment by Certificate Program Area	26
Credit Enrollment by Associate Degree & Certificate Program Area	28
Geographic Distribution	30

Introduction

In the Fall of 2006, there are 46,489 students enrolled in the Connecticut Community Colleges. This represents a .6% increase over Fall 2005. Enrollment is at its highest level. This Fall is also a record-breaking semester with respect to FTE. Our colleges are serving 26,050 Full-time Equivalent Students, which is the largest number ever. As compared to Fall 2005, General Fund headcount enrollment has increased by .1% and General Fund FTE enrollment has increased by 1%.

In the Fall 2006 semester, 63.8% of all community college students are part-time, and 36.2% are full-time. Full-time attendance has increased by 22.7% since Fall 2002, while part-time attendance has decreased by 4.8%. From 1998 to 2001, part-time students generated more FTE than full-time students. This trend changed in 2002 and as of this Fall, full-time students account for 55.9% of the total FTE generated.

This Fall, 15,111 minority students represent 32.5% of the student body (28.9% are Black and Hispanic) – a 12.7% increase in minority enrollment since 2002. Over the past five years, significant enrollment increases have occurred for Black males (5%), Black females (10%), Hispanic males (14%) and Hispanic females (21%).

The system's gender composition has remained relatively consistent over the past five years. This Fall, 62.5% of the student body is female and 37.5% is male.

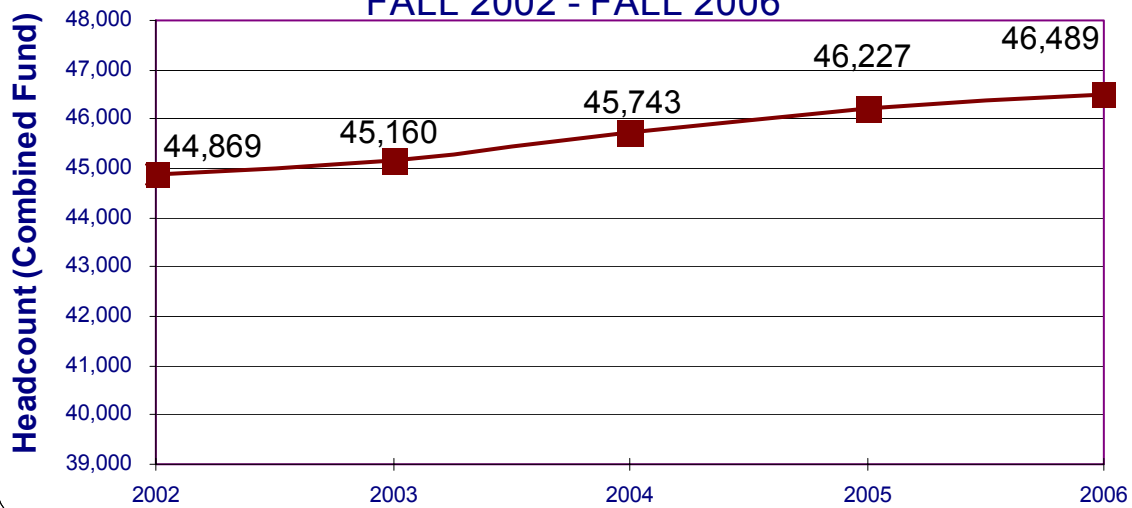
The average age of the student population is 28; 21 for full-time students and 31 for part-timers. Full-time enrollment continues to increase and these are generally the more "traditional age" college students; 74.8% of them are under the age of 22. Overall 43.6% of our students are under the age of 22. This represents a 23.4% increase since 2002 and the largest proportion of our student body.

In the Fall of 2006, 45.1% of all community college students are enrolled in occupational programs. Liberal Arts/General Studies programs account for an additional 35.3% and the remaining 19.7% of the students are not enrolled in a specific degree or certificate program. Over the last five years, among specific programs, Liberal Arts/General Studies have seen the largest growth; up 20.2% since Fall 2002.

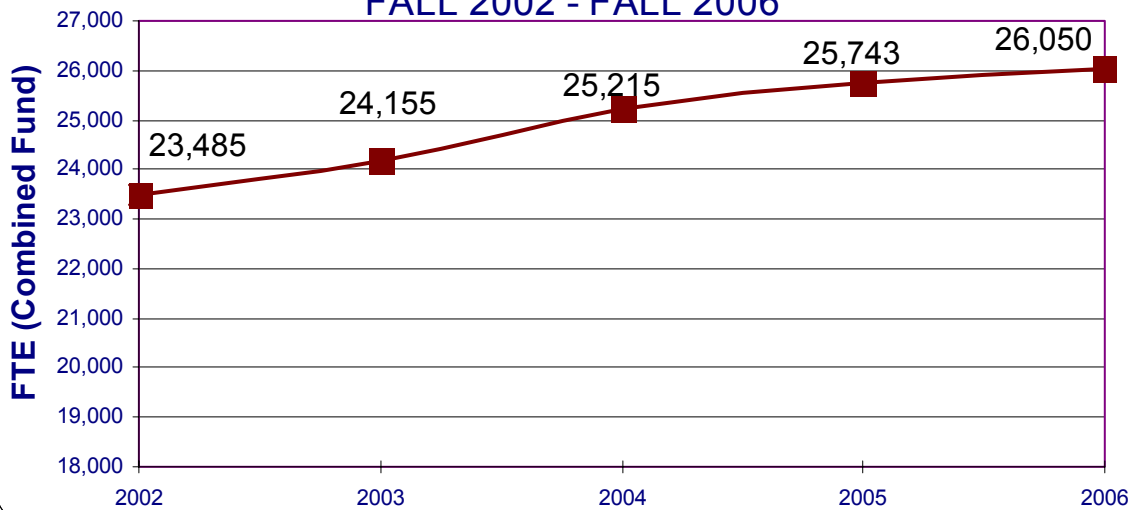
The most popular programs among all students are Liberal Arts/General Studies, Business and Social/Public Services. The most popular programs among female students are Liberal Arts/General Studies, Business and Health/Life Sciences. The most popular programs among males are Liberal Arts/General Studies, Business and Science/Engineering/Technology.

Our credit students come from all over the state of Connecticut and represent 49% of the total undergraduate student enrollment in public higher education. This Fall, our students reside in all 169 towns (see the map on page 29).

CONNECTICUT COMMUNITY COLLEGES FALL 2002 - FALL 2006

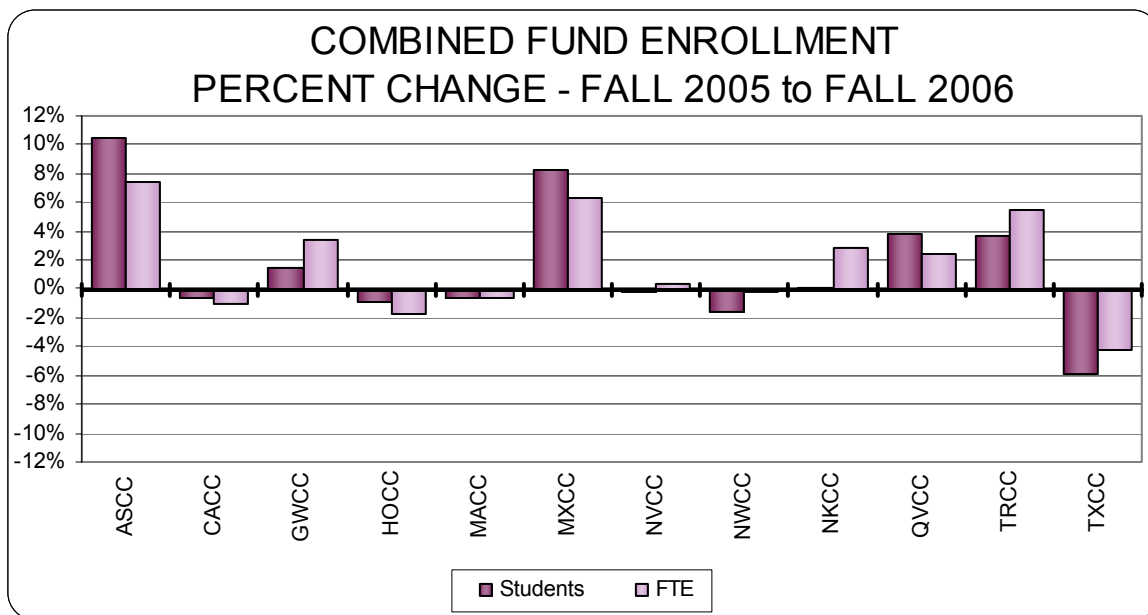


CONNECTICUT COMMUNITY COLLEGES FALL 2002 - FALL 2006



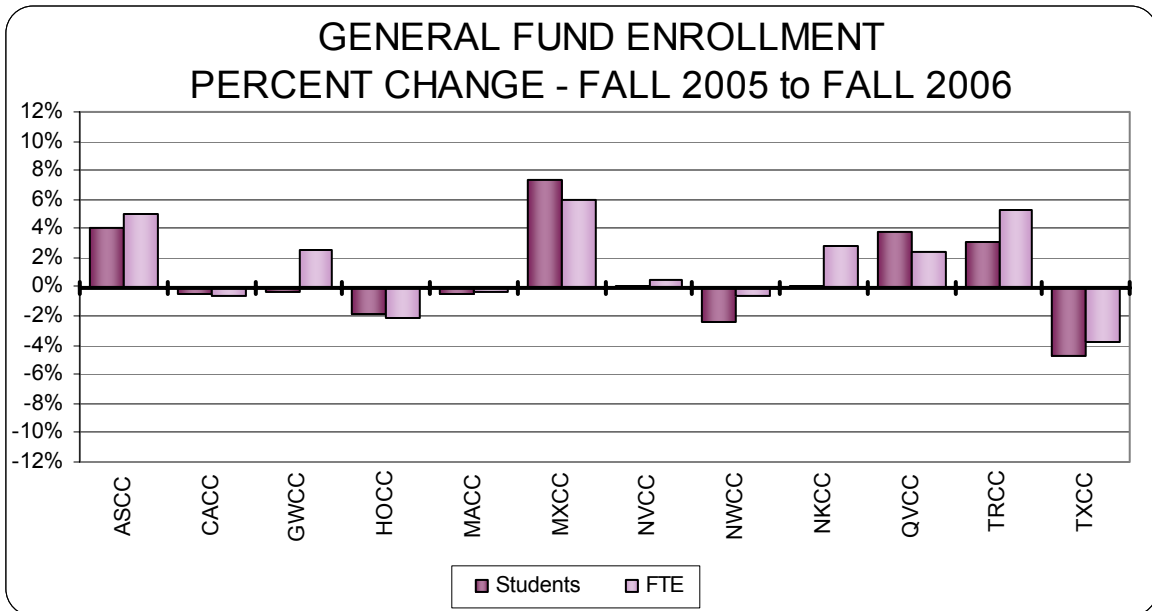
CONNECTICUT COMMUNITY COLLEGES
COMBINED FUND ENROLLMENT
FALL 2005 & FALL 2006

	FALL 2005		FALL 2006		PERCENT CHANGE	
	STUDENTS	FTE	STUDENTS	FTE	STUDENTS	FTE
Asnuntuck CC	1,483	786	1,638	845	10.5%	7.4%
Capital CC	3,573	1,933	3,550	1,912	-0.6%	-1.1%
Gateway CC	5,739	3,083	5,824	3,188	1.5%	3.4%
Housatonic CC	4,471	2,469	4,431	2,425	-0.9%	-1.8%
Manchester CC	6,135	3,712	6,094	3,691	-0.7%	-0.6%
Middlesex CC	2,286	1,287	2,474	1,368	8.2%	6.3%
Naugatuck Valley CC	5,667	3,268	5,659	3,279	-0.1%	0.3%
Northwestern Ct. CC	1,569	799	1,544	798	-1.6%	-0.2%
Norwalk CC	6,036	3,316	6,040	3,410	0.1%	2.8%
Quinebaug Valley CC	1,714	948	1,779	971	3.8%	2.5%
Three Rivers CC	3,660	2,020	3,793	2,131	3.6%	5.5%
Tunxis CC	3,894	2,121	3,663	2,030	-5.9%	-4.3%
SYSTEM TOTAL	46,227	25,743	46,489	26,050	0.6%	1.2%



CONNECTICUT COMMUNITY COLLEGES
GENERAL FUND ENROLLMENT
FALL 2005 & FALL 2006

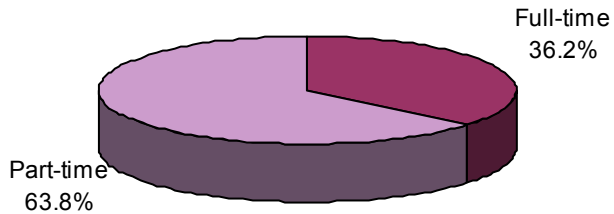
	FALL 2005		FALL 2006		PERCENT CHANGE	
	STUDENTS	FTE	STUDENTS	FTE	STUDENTS	FTE
Asnuntuck CC	1,441	778	1,499	817	4.0%	5.0%
Capital CC	3,543	1,915	3,524	1,903	-0.5%	-0.6%
Gateway CC	5,666	3,057	5,644	3,134	-0.4%	2.5%
Housatonic CC	4471	2,469	4,389	2,417	-1.8%	-2.1%
Manchester CC	6,071	3,654	6,040	3,640	-0.5%	-0.4%
Middlesex CC	2,286	1,287	2,454	1,364	7.3%	5.9%
Naugatuck Valley CC	5,606	3,253	5,607	3,268	0.0%	0.5%
Northwestern Ct. CC	1,549	795	1,512	790	-2.4%	-0.6%
Norwalk CC	6,036	3,316	6,040	3,410	0.1%	2.8%
Quinebaug Valley CC	1,714	948	1,779	971	3.8%	2.5%
Three Rivers CC	3,660	2,020	3,774	2,127	3.1%	5.3%
Tunxis CC	3,847	2,111	3,663	2,030	-4.8%	-3.8%
SYSTEM TOTAL	45,890	25,603	45,925	25,871	0.1%	1.0%



CONNECTICUT COMMUNITY COLLEGES
 COMBINED FUND ENROLLMENT
 FULL-TIME/PART-TIME
 FALL 2006

	<u>FULL-TIME</u>		<u>PART-TIME</u>		<u>TOTAL</u>		<u>PERCENT</u>	
	STUDENTS	FTE	STUDENTS	FTE	STUDENTS	FTE	Full-time	Part-time
Asnuntuck CC	568	503	1,070	342	1,638	845	34.7%	65.3%
Capital CC	896	775	2,654	1,137	3,550	1,912	25.2%	74.8%
Gateway CC	1,961	1,671	3,863	1,517	5,824	3,188	33.7%	66.3%
Housatonic CC	1,489	1,277	2,942	1,148	4,431	2,425	33.6%	66.4%
Manchester CC	2,678	2,318	3,416	1,373	6,094	3,691	43.9%	56.1%
Middlesex CC	943	801	1,531	567	2,474	1,368	38.1%	61.9%
Naugatuck Valley CC	2,266	1,947	3,393	1,332	5,659	3,279	40.0%	60.0%
Northwestern Ct. CC	521	454	1,023	344	1,544	798	33.7%	66.3%
Norwalk CC	2,102	1,885	3,938	1,525	6,040	3,410	34.8%	65.2%
Quinebaug Valley CC	669	571	1,110	401	1,779	971	37.6%	62.4%
Three Rivers CC	1,279	1,139	2,514	992	3,793	2,131	33.7%	66.3%
Tunxis CC	1,455	1,229	2,208	801	3,663	2,030	39.7%	60.3%
SYSTEM TOTAL	16,827	14,569	29,662	11,481	46,489	26,050	36.2%	63.8%

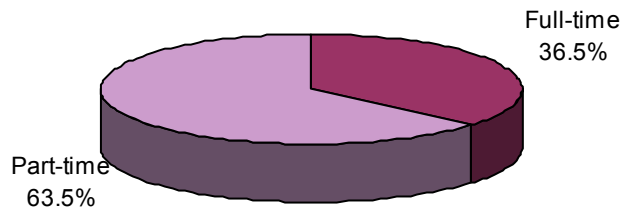
**FULL-TIME/PART-TIME
 FALL 2006 COMBINED FUND ENROLLMENT**



CONNECTICUT COMMUNITY COLLEGES
GENERAL FUND ENROLLMENT
FULL-TIME/PART-TIME
FALL 2006

	<u>FULL-TIME</u>		<u>PART-TIME</u>		<u>TOTAL</u>		<u>PERCENT</u>	
	STUDENTS	FTE	STUDENTS	FTE	STUDENTS	FTE	Full-time	Part-time
Asnuntuck CC	568	503	931	314	1,499	817	37.9%	62.1%
Capital CC	896	775	2,628	1,128	3,524	1,903	25.4%	74.6%
Gateway CC	1,956	1,667	3,688	1,467	5,644	3,134	34.7%	65.3%
Housatonic CC	1,489	1,277	2,900	1,140	4,389	2,417	33.9%	66.1%
Manchester CC	2,609	2,258	3,431	1,382	6,040	3,640	43.2%	56.8%
Middlesex CC	943	801	1,511	563	2,454	1,364	38.4%	61.6%
Naugatuck Valley CC	2,265	1,946	3,342	1,322	5,607	3,268	40.4%	59.6%
Northwestern Ct. CC	521	454	991	336	1,512	790	34.5%	65.5%
Norwalk CC	2,102	1,885	3,938	1,525	6,040	3,410	34.8%	65.2%
Quinebaug Valley CC	669	571	1,110	401	1,779	971	37.6%	62.4%
Three Rivers CC	1,279	1,139	2,495	988	3,774	2,127	33.9%	66.1%
Tunxis CC	1,455	1,229	2,208	801	3,663	2,030	39.7%	60.3%
SYSTEM TOTAL	16,752	14,504	29,173	11,367	45,925	25,871	36.5%	63.5%

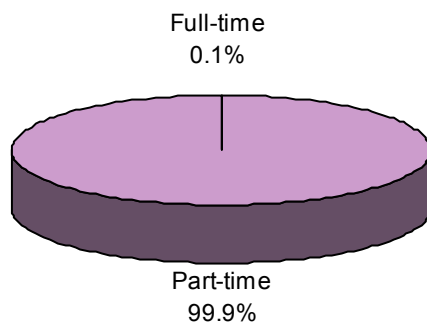
**FULL-TIME/PART-TIME
FALL 2006 GENERAL FUND ENROLLMENT**



CONNECTICUT COMMUNITY COLLEGES
EXTENSION FUND ENROLLMENT
FULL-TIME/PART-TIME
FALL 2006

	<u>FULL-TIME</u>		<u>PART-TIME</u>		<u>TOTAL</u>		<u>PERCENT</u>	
	STUDENTS	FTE	STUDENTS	FTE	STUDENTS	FTE	Full-time	Part-time
Asnuntuck CC	0	0	140	28	140	28	0.0%	100.0%
Capital CC	0	0	29	9	29	9	0.0%	100.0%
Gateway CC	1	1	199	53	200	54	0.5%	99.5%
Housatonic CC	0	0	42	8	42	8	0.0%	100.0%
Manchester CC	0	0	234	51	234	51	0.0%	100.0%
Middlesex CC	0	0	23	5	23	5	0.0%	100.0%
Naugatuck Valley CC	0	0	55	11	55	11	0.0%	100.0%
Northwestern Ct. CC	0	0	32	8	32	8	0.0%	100.0%
Norwalk CC	0	0	0	0	0	0		
Quinebaug Valley CC	0	0	0	0	0	0		
Three Rivers CC	0	0	20	4	20	4	0.0%	100.0%
Tunxis CC	0	0	0	0	0	0		
SYSTEM TOTAL	1	1	774	178	775	179	0.1%	99.9%

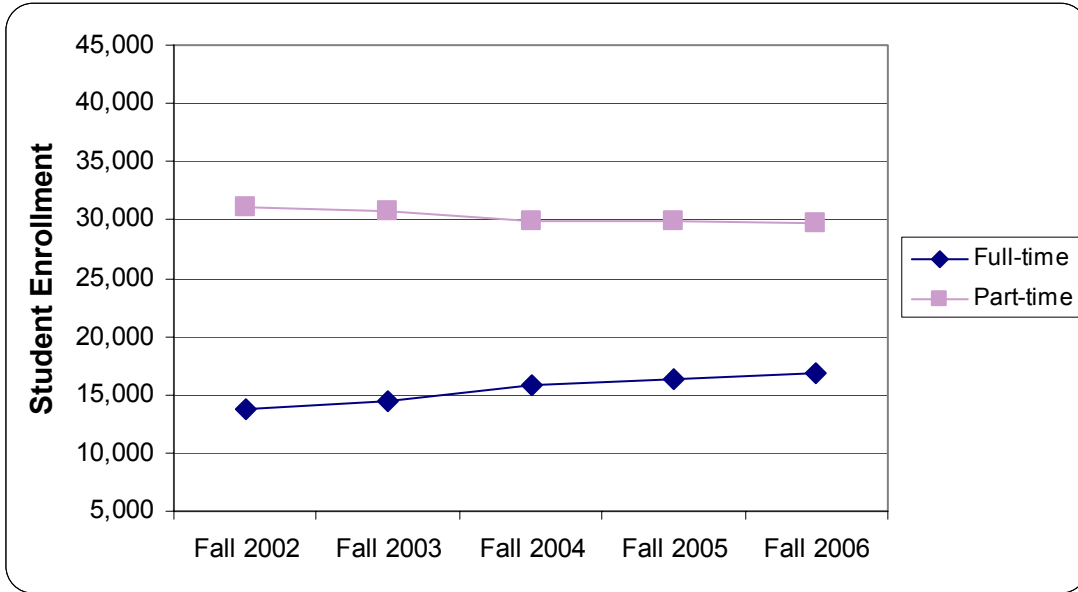
**FULL-TIME/PART-TIME
FALL 2006 EXTENSION FUND ENROLLMENT**



CONNECTICUT COMMUNITY COLLEGES
 COMBINED FUND STUDENT ENROLLMENT HISTORY
 FALL 2002 - FALL 2006

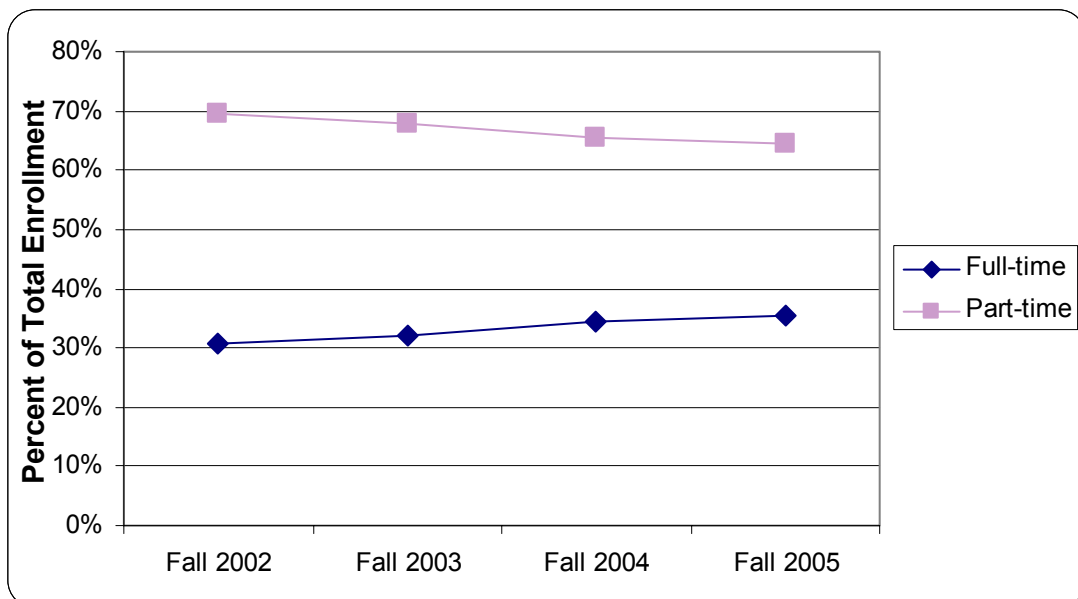
Student Enrollment

	Fall 2002	Fall 2003	Fall 2004	Fall 2005	Fall 2006
Full-time	13,715	14,469	15,798	16,385	16,827
Part-time	31,154	30,691	29,945	29,842	29,662
Total	44,869	45,160	45,743	46,227	46,489



Percent of Total Enrollment

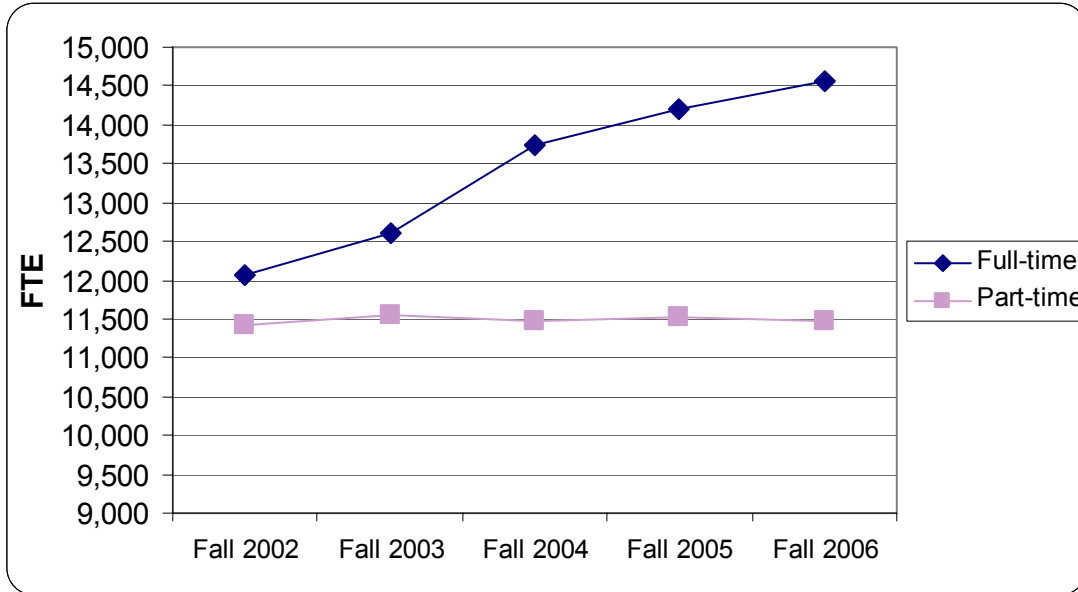
	Fall 2002	Fall 2003	Fall 2004	Fall 2005	Fall 2006
Full-time	30.6%	32.0%	34.5%	35.4%	36.2%
Part-time	69.4%	68.0%	65.5%	64.6%	63.8%
Total	100.0%	100.0%	100.0%	100.0%	100.0%



CONNECTICUT COMMUNITY COLLEGES
 COMBINED FUND FTE ENROLLMENT HISTORY
 FALL 2002 - FALL 2006

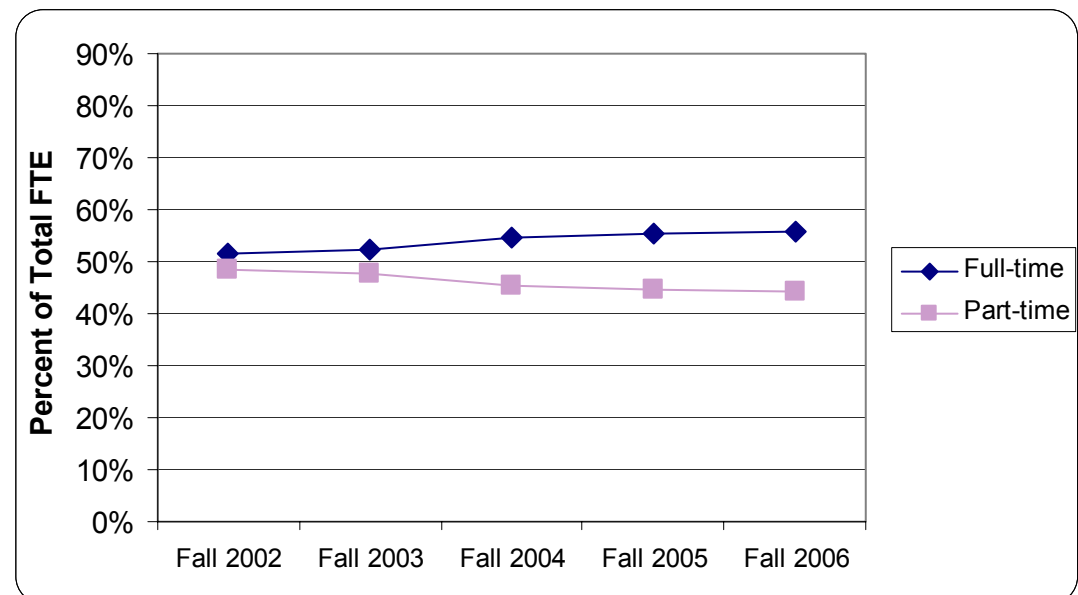
FTE Enrollment

	Fall 2002	Fall 2003	Fall 2004	Fall 2005	Fall 2006
Full-time	12,063	12,616	13,741	14,212	14,569
Part-time	11,422	11,539	11,474	11,531	11,481
Total	23,485	24,155	25,215	25,743	26,050



Percent of Total FTE

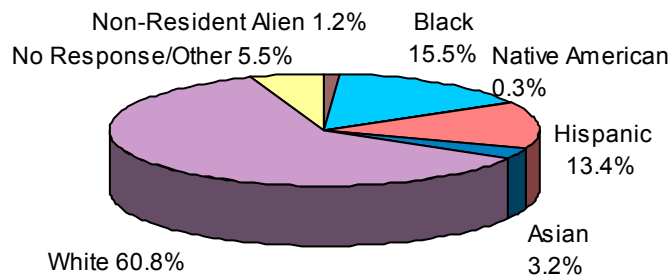
	Fall 2002	Fall 2003	Fall 2004	Fall 2005	Fall 2006
Full-time	51.4%	52.2%	54.5%	55.2%	55.9%
Part-time	48.6%	47.8%	45.5%	44.8%	44.1%
Total	100.0%	100.0%	100.0%	100.0%	100.0%



CONNECTICUT COMMUNITY COLLEGES
COMBINED FUND ENROLLMENT BY ETHNIC GROUP
FALL 2006

	NON-RESIDENT ALIEN	BLACK NON-HISPANIC	AMERICAN INDIAN OR ALASKAN NATIVE	ASIAN OR PACIFIC ISLANDER	HISPANIC	WHITE NON-HISPANIC	UNKNOWN
Asnuntuck CC		132	4	29	82	1367	24
Capital CC	20	1346	8	129	996	859	192
Gateway CC	69	1447	15	204	775	2976	338
Housatonic CC	50	1219	5	133	949	1809	266
Manchester CC	39	778	21	224	586	4128	318
Middlesex CC	7	205	4	69	224	1857	108
Naugatuck Valley CC	35	456	18	157	640	3944	409
Northwestern Ct. CC		21	2	29	48	1375	69
Norwalk CC	276	1094	8	264	1153	2836	409
Quinebaug Valley CC		35	14	24	159	1476	71
Three Rivers CC	19	280	44	140	295	2775	240
Tunxis CC	24	196	8	103	340	2861	131
SYSTEM TOTAL	539 1.2%	7,209 15.5%	151 0.3%	1,505 3.2%	6,247 13.4%	28,263 60.8%	2,575 5.5%

ETHNIC DISTRIBUTION
FALL 2006



CONNECTICUT COMMUNITY COLLEGES
ENROLLMENT HISTORY BY ETHNICITY
FALL 2002 - FALL 2006

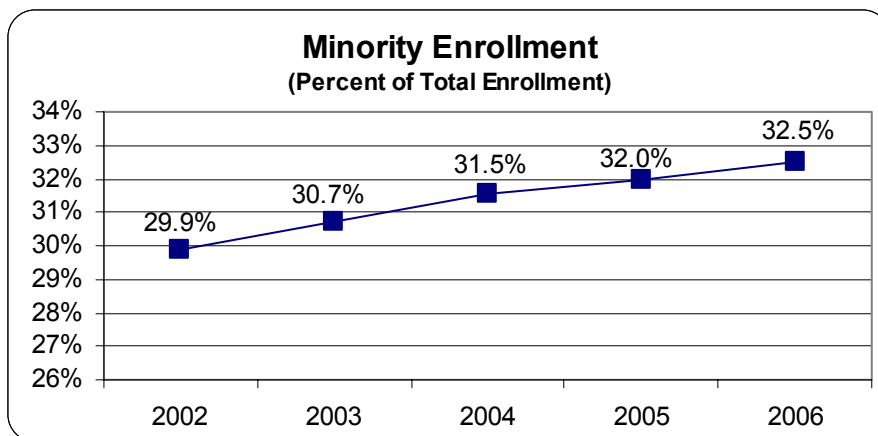
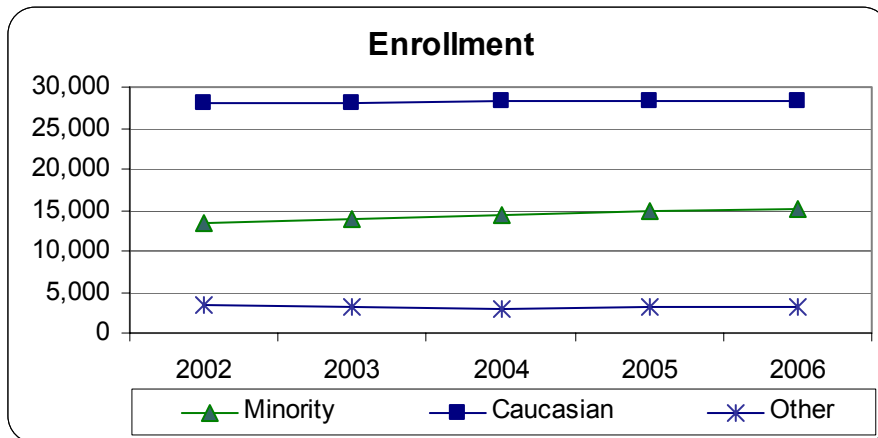
Enrollment

Year	Non-Res	Black	Amer.Ind	Asian	Hispanic	White	Unk	Total
2002	543	6,677	205	1,375	5,157	28,124	2,788	44,869
2003	499	6,858	187	1,389	5,447	28,155	2,625	45,160
2004	401	6,990	197	1,475	5,762	28,346	2,572	45,743
2005	520	7,125	165	1,495	5,985	28,385	2,552	46,227
2006	539	7,209	151	1,505	6,247	28,263	2,575	46,489

Percent of Total Enrollment

Year	Non-Res	Black	Amer.Ind	Asian	Hispanic	White	Unk
2002	1.2%	14.9%	0.5%	3.1%	11.5%	62.7%	6.2%
2003	1.1%	15.2%	0.4%	3.1%	12.1%	62.3%	5.8%
2004	0.9%	15.3%	0.4%	3.2%	12.6%	62.0%	5.6%
2005	1.1%	15.4%	0.4%	3.2%	12.9%	61.4%	5.5%
2006	1.2%	15.5%	0.3%	3.2%	13.4%	60.8%	5.5%

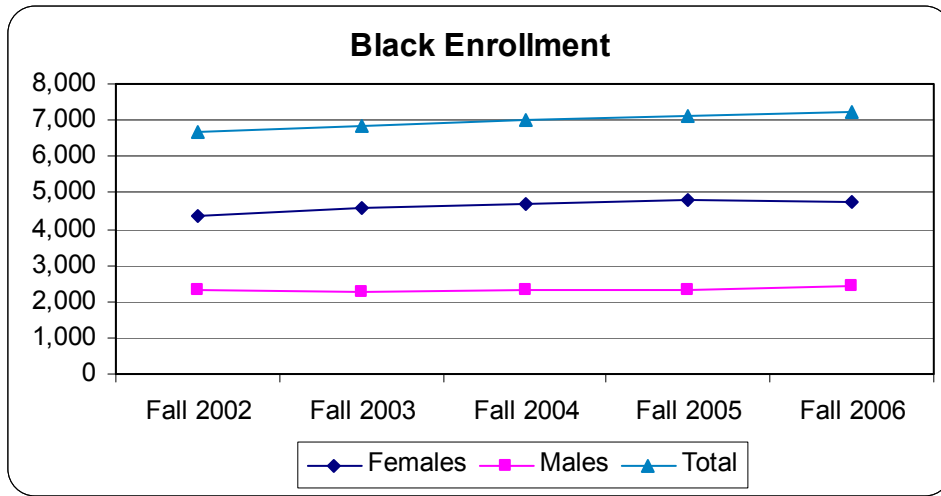
This Fall, 15,111 minority students make up 32.5% of the student body (28.9% are Black and Hispanic) – a 12.7% increase in minority enrollment since 2002.



CONNECTICUT COMMUNITY COLLEGES
BLACK & HISPANIC ENROLLMENT HISTORY
FALL 2002 - FALL 2006

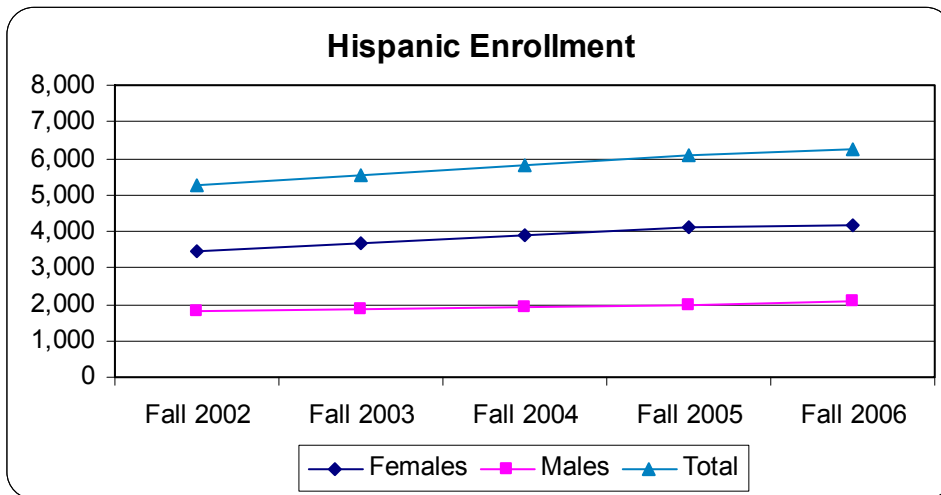
Black Enrollment

	Fall 2002	Fall 2003	Fall 2004	Fall 2005	Fall 2006	% Change	
						F05-F06	F02-F06
Females	4,345	4,594	4,684	4,820	4,761	-1%	10%
Males	2,332	2,264	2,306	2,305	2,448	6%	5%
Total	6,677	6,858	6,990	7,125	7,209	1%	8%

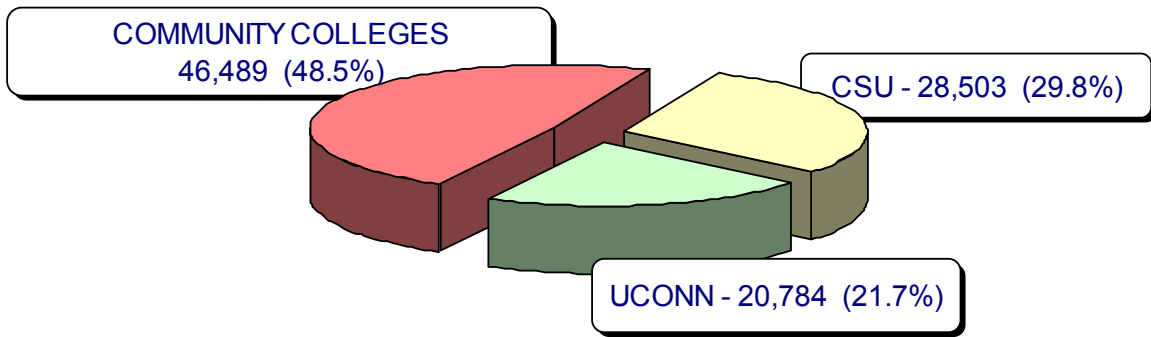


Hispanic Enrollment

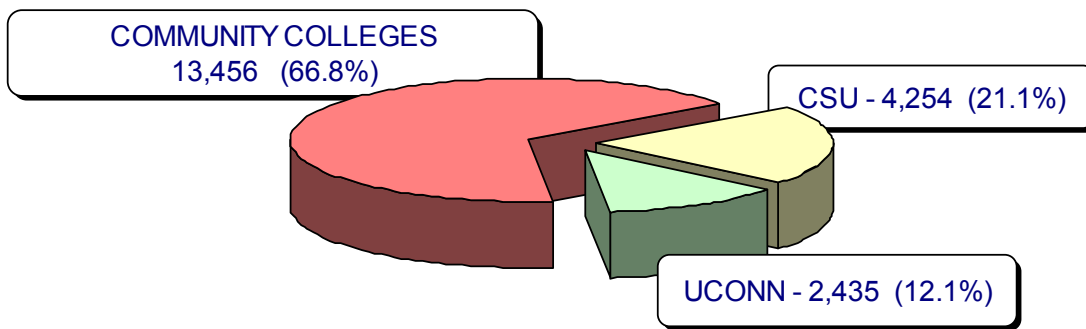
	Fall 2002	Fall 2003	Fall 2004	Fall 2005	Fall 2006	% Change	
						F05-F06	F02-F06
Females	3,430	3,672	3,887	4,112	4,154	1%	21%
Males	1,834	1,869	1,942	1,969	2,093	6%	14%
Total	5,264	5,541	5,829	6,081	6,247	3%	19%



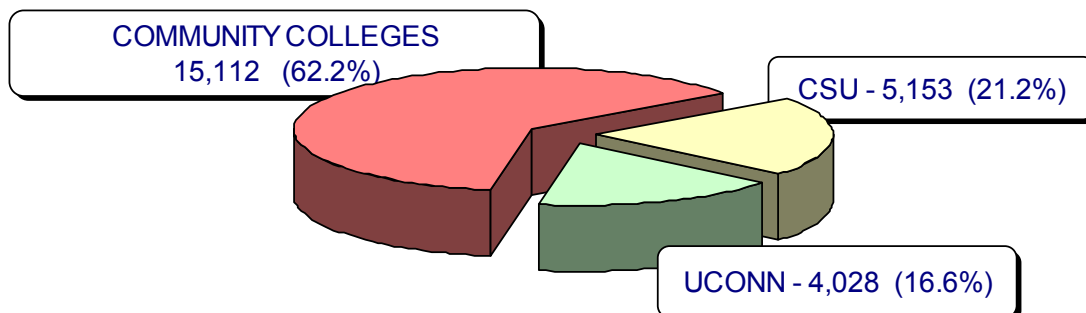
UNDERGRADUATES AT PUBLIC INSTITUTIONS FALL 2006 HEADCOUNT ENROLLMENT



UNDERGRADUATES AT PUBLIC INSTITUTIONS FALL 2006 BLACK & HISPANIC ENROLLMENT



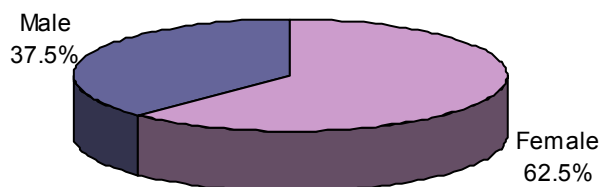
UNDERGRADUATES AT PUBLIC INSTITUTIONS FALL 2006 MINORITY ENROLLMENT



CONNECTICUT COMMUNITY COLLEGES
COMBINED FUND ENROLLMENT BY GENDER
FALL 2006

	FEMALE	MALE	PERCENT	
			Female	Male
Asnuntuck CC	909	729	55.5%	44.5%
Capital CC	2,550	1,000	71.8%	28.2%
Gateway CC	3,712	2,112	63.7%	36.3%
Housatonic CC	2,949	1,482	66.6%	33.4%
Manchester CC	3,382	2,712	55.5%	44.5%
Middlesex CC	1,568	906	63.4%	36.6%
Naugatuck Valley CC	3,456	2,203	61.1%	38.9%
Northwestern Ct. CC	994	550	64.4%	35.6%
Norwalk CC	3,697	2,343	61.2%	38.8%
Quinebaug Valley CC	1,205	574	67.7%	32.3%
Three Rivers CC	2,346	1,447	61.9%	38.1%
Tunxis CC	2273	1,390	62.1%	37.9%
SYSTEM TOTAL	29,041	17,448	62.5%	37.5%

ENROLLMENT BY GENDER
Fall 2006



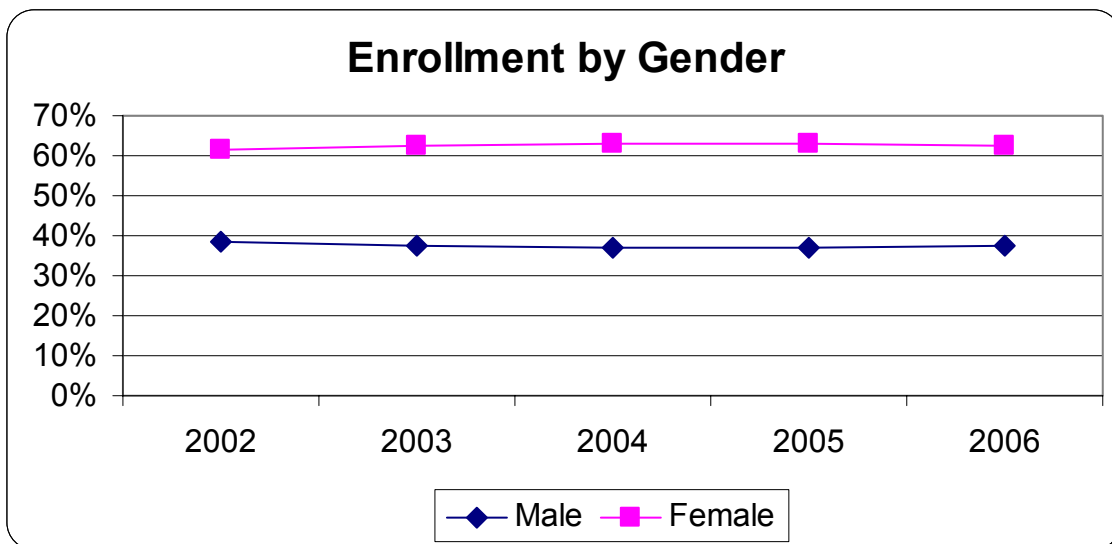
CONNECTICUT COMMUNITY COLLEGES
ENROLLMENT HISTORY BY GENDER
FALL 2002 - FALL 2006

Enrollment

Year	Male	Female	Total
2002	17,180	27,689	44,869
2003	16,845	28,315	45,160
2004	16,987	28,756	45,743
2005	17,070	29,157	46,227
2006	17,448	29,041	46,489

Percent of Total

Year	Male	Female
2002	38.3%	61.7%
2003	37.3%	62.7%
2004	37.1%	62.9%
2005	36.9%	63.1%
2006	37.5%	62.5%



CONNECTICUT COMMUNITY COLLEGES
COMBINED FUND AGE DISTRIBUTION
FALL 2006

FULL-TIME

	Under 22	22-29	30s	40s	50+	Total
Asnuntuck CC	425	79	24	20	20	568
Capital CC	552	218	91	24	11	896
Gateway CC	1371	394	111	62	23	1,961
Housatonic CC	1131	255	60	32	11	1,489
Manchester CC	2170	387	71	37	13	2,678
Middlesex CC	719	154	46	21	3	943
Naugatuck Valley CC	1795	356	78	32	5	2,266
Northwestern Ct. CC	411	68	19	19	4	521
Norwalk CC	1445	482	109	45	21	2,102
Quinebaug Valley CC	505	94	43	20	7	669
Three Rivers CC	944	214	68	47	6	1,279
Tunxis CC	1125	247	60	18	5	1,455
SYSTEM TOTAL	12,593	2,948	780	377	129	16,827
	74.8%	17.5%	4.6%	2.2%	0.8%	

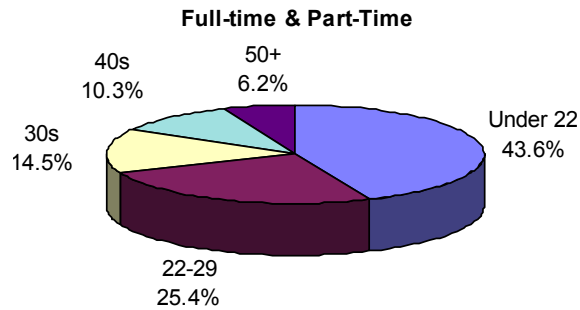
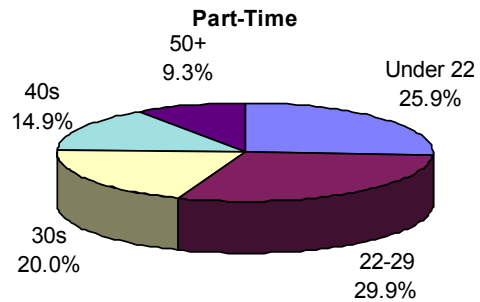
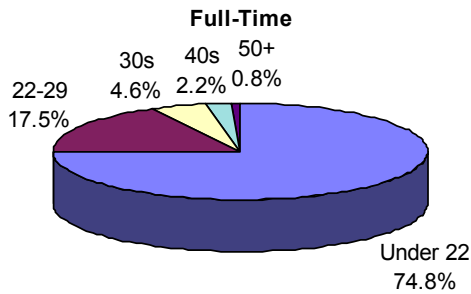
PART-TIME

	Under 22	22-29	30s	40s	50+	Total
Asnuntuck CC	339	296	164	171	100	1,070
Capital CC	560	757	706	455	176	2,654
Gateway CC	884	1,122	846	635	376	3,863
Housatonic CC	740	953	615	412	222	2,942
Manchester CC	1,087	1,019	589	461	260	3,416
Middlesex CC	369	485	294	241	142	1,531
Naugatuck Valley CC	939	1,018	687	473	276	3,393
Northwestern Ct. CC	283	232	145	144	219	1,023
Norwalk CC	963	1,125	727	534	589	3,938
Quinebaug Valley CC	286	304	218	175	127	1,110
Three Rivers CC	647	801	544	397	125	2,514
Tunxis CC	574	761	406	315	152	2,208
SYSTEM TOTAL	7,671	8,873	5,941	4,413	2,764	29,662
	25.9%	29.9%	20.0%	14.9%	9.3%	

COMBINED FUND AGE DISTRIBUTION (continued)

FULL-TIME & PART-TIME

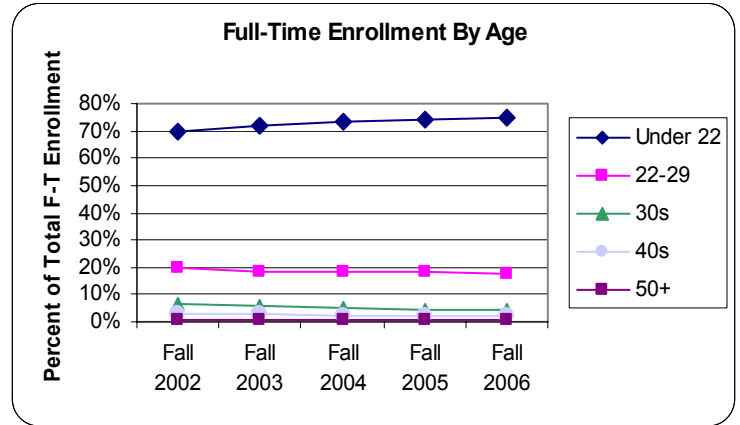
	Under 22	22-29	30s	40s	50+	Total
Asnuntuck CC	764	375	188	191	120	1,638
Capital CC	1,112	975	797	479	187	3,550
Gateway CC	2,255	1,516	957	697	399	5,824
Housatonic CC	1,871	1,208	675	444	233	4,431
Manchester CC	3,257	1,406	660	498	273	6,094
Middlesex CC	1,088	639	340	262	145	2,474
Naugatuck Valley CC	2,734	1,374	765	505	281	5,659
Northwestern Ct. CC	694	300	164	163	223	1,544
Norwalk CC	2,408	1,607	836	579	610	6,040
Quinebaug Valley CC	791	398	261	195	134	1,779
Three Rivers CC	1,591	1,015	612	444	131	3,793
Tunxis CC	1,699	1,008	466	333	157	3,663
SYSTEM TOTAL	20,264	11,821	6,721	4,790	2,893	46,489
	43.6%	25.4%	14.5%	10.3%	6.2%	



CONNECTICUT COMMUNITY COLLEGES
ENROLLMENT HISTORY BY AGE
FALL 2006

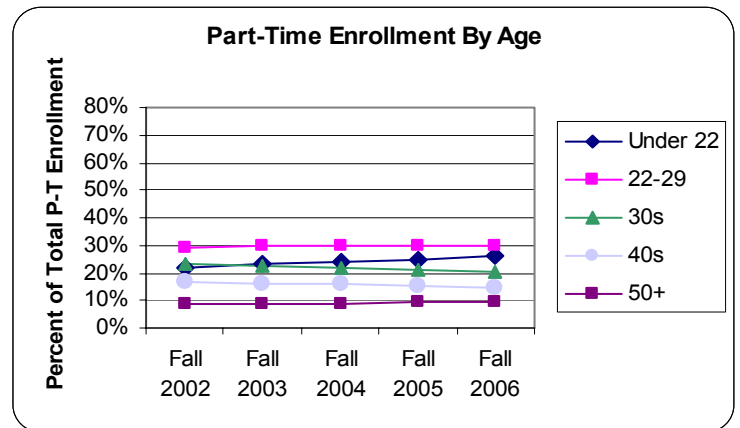
Percent of Total Full-Time Enrollment

	Fall 2002	Fall 2003	Fall 2004	Fall 2005	Fall 2006	% Change 2002-2006
Under 22	69.6%	72.1%	73.2%	74.3%	74.8%	5.2%
22-29	20.2%	18.5%	18.6%	18.0%	17.5%	-2.6%
30s	6.6%	6.0%	5.4%	4.7%	4.6%	-1.9%
40s	2.8%	2.6%	2.3%	2.2%	2.2%	-0.6%
50+	0.9%	0.7%	0.6%	0.8%	0.8%	-0.1%
Total	100.0%	100.0%	100.0%	100.0%	100.0%	



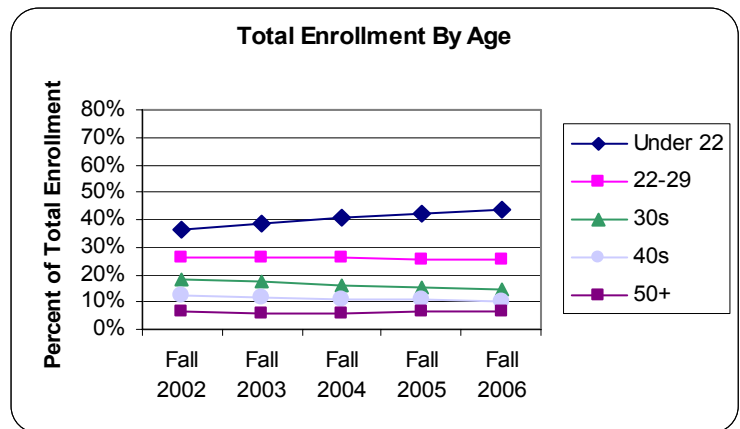
Percent of Total Part-Time Enrollment

	Fall 2002	Fall 2003	Fall 2004	Fall 2005	Fall 2006	% Change 2002-2006
Under 22	22.1%	23.0%	23.7%	24.4%	25.9%	3.8%
22-29	29.1%	29.5%	29.9%	30.1%	29.9%	0.8%
30s	23.4%	22.9%	21.7%	20.9%	20.0%	-3.4%
40s	16.4%	16.1%	15.7%	15.4%	14.9%	-1.5%
50+	9.0%	8.5%	9.0%	9.2%	9.3%	0.3%
Total	100.0%	100.0%	100.0%	100.0%	100.0%	

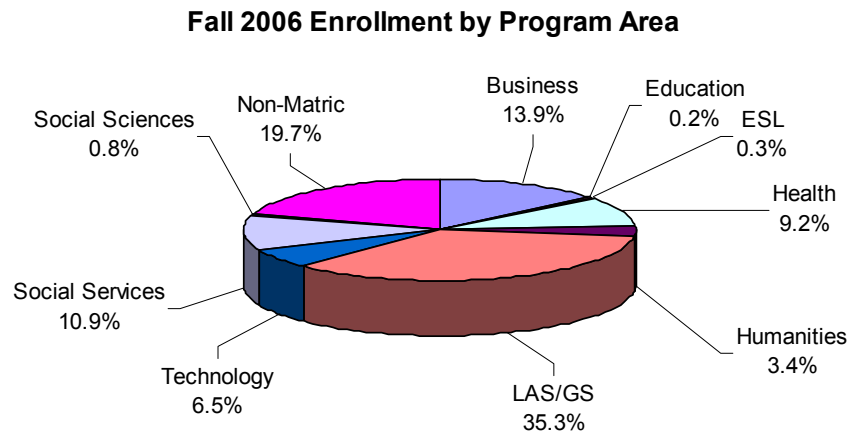
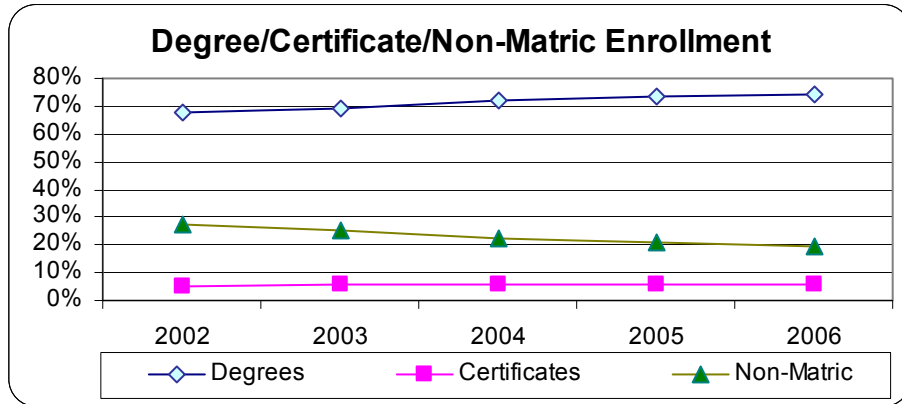


Percent of Total Enrollment

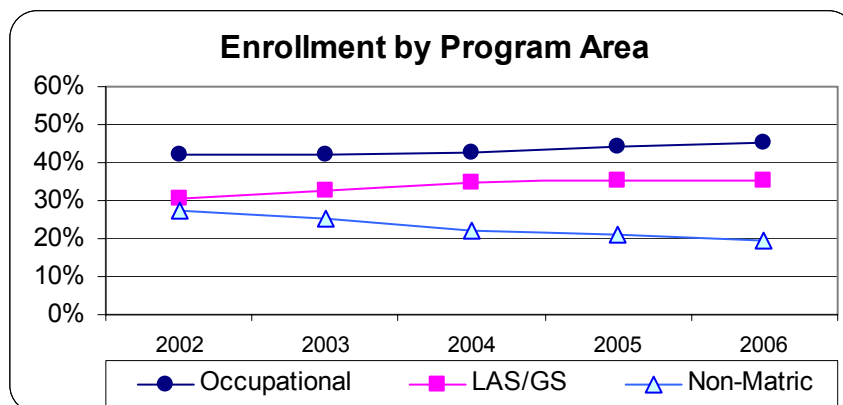
	Fall 2002	Fall 2003	Fall 2004	Fall 2005	Fall 2006	% Change 2002-2006
Under 22	36.6%	38.7%	40.8%	42.1%	43.6%	7.0%
22-29	26.4%	26.0%	26.0%	25.8%	25.4%	-1.0%
30s	18.3%	17.5%	16.1%	15.2%	14.5%	-3.8%
40s	12.3%	11.8%	11.0%	10.7%	10.3%	-2.0%
50+	6.5%	6.0%	6.1%	6.2%	6.2%	-0.3%
Total	100.0%	100.0%	100.0%	100.0%	100.0%	



In Fall 2006, 34,565 students (74%) are enrolled in degree programs, 2,786 students (6%) are enrolled in certificate programs, and the remaining 9,138 students (20%) are not enrolled in a specific degree or certificate program. There is a 2% increase in degree program enrollments over last year and a 14% increase since 2002. There is a 3% increase in certificate program enrollments over last year and an 18% increase since 2002.



In the Fall of 2006, occupational programs account for 45.1% of all community college students. Liberal Arts/General Studies programs account for an additional 35.3% and the remaining 19.7% of the students are not enrolled in a specific degree or certificate program. Among the occupational programs, 13.9% of all community college students are enrolled in Business programs, 9.2% in Health/Life Sciences programs, 6.5% in Science/Engineering/Technology programs, 10.9% in Social/Public Service programs, and 4.6% in Humanities/Arts/Communications, Social Sciences, Education and ESL programs.



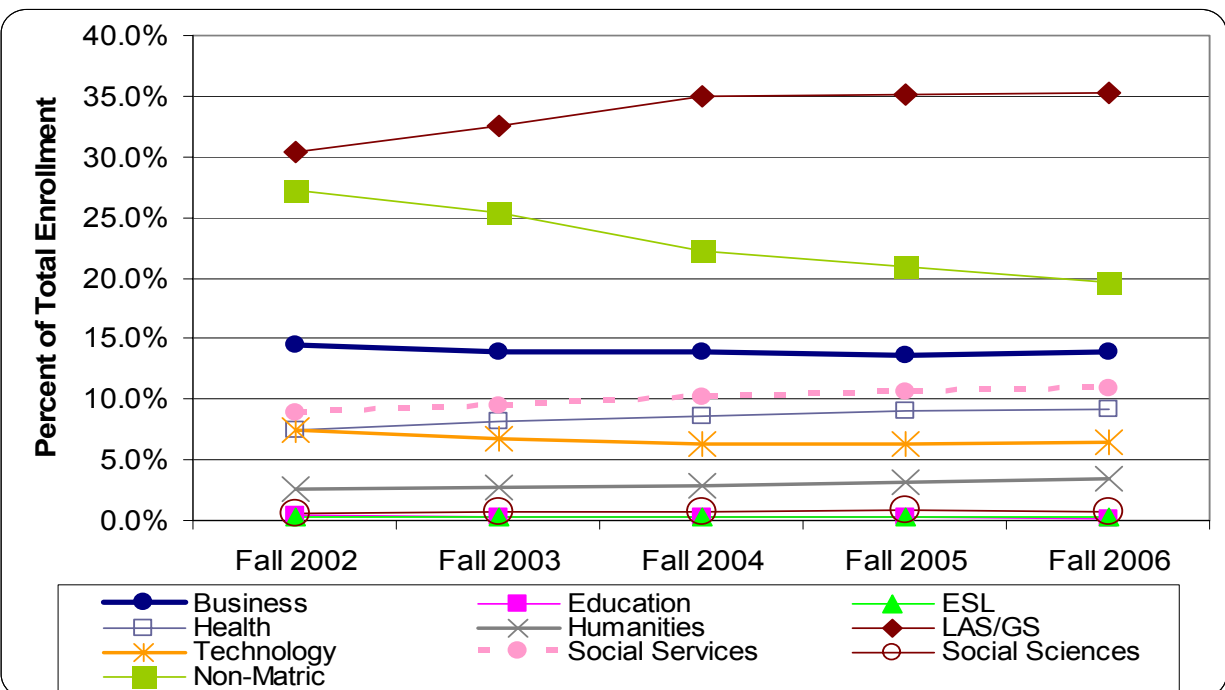
CONNECTICUT COMMUNITY COLLEGES
CREDIT ENROLLMENT HISTORY BY PROGRAM AREA
Fall 2002 - FALL 2006

Enrollment

Program Area	Fall 2002	Fall 2003	Fall 2004	Fall 2005	Fall 2006
Business	6,521	6,284	6,337	6,323	6,446
Education	188	156	101	120	98
ESL	138	107	110	110	117
Health/Life Sciences	3,358	3,670	3,961	4,155	4,296
Humanities/Arts/Communications	1,148	1,198	1,293	1,433	1,572
Liberal Arts & General Studies	13,649	14,705	15,970	16,237	16,404
Science/Engineering/Technology	3,357	3,041	2,865	2,938	3,000
Social & Public Services	3,994	4,254	4,628	4,881	5,055
Social Sciences	265	305	320	372	363
Non-Matriculated	12,251	11,440	10,158	9,658	9,138
Total	44,869	45,160	45,743	46,227	46,489

Percent of Total Enrollment

Program Area	Fall 2002	Fall 2003	Fall 2004	Fall 2005	Fall 2006
Business	14.5%	13.9%	13.9%	13.7%	13.9%
Education	0.4%	0.3%	0.2%	0.3%	0.2%
ESL	0.3%	0.2%	0.2%	0.2%	0.3%
Health/Life Sciences	7.5%	8.1%	8.7%	9.0%	9.2%
Humanities/Arts/Communications	2.6%	2.7%	2.8%	3.1%	3.4%
Liberal Arts & General Studies	30.4%	32.6%	34.9%	35.1%	35.3%
Science/Engineering/Technology	7.5%	6.7%	6.3%	6.4%	6.5%
Social & Public Services	8.9%	9.4%	10.1%	10.6%	10.9%
Social Sciences	0.6%	0.7%	0.7%	0.8%	0.8%
Non-Matriculated	27.3%	25.3%	22.2%	20.9%	19.7%
Total	100.0%	100.0%	100.0%	100.0%	100.0%



CONNECTICUT COMMUNITY COLLEGES
CREDIT ENROLLMENT HISTORY BY PROGRAM AREA & GENDER
FALL 2006

Fall 2006 Credit Enrollment in Associate Degree Programs

Program Area	Female	%	Male	%	Total
Business	3,307	54.9%	2,719	45.1%	6,026
Education	54	68.4%	25	31.6%	79
Health/Life Sciences	2,582	83.3%	516	16.7%	3,098
Humanities/Arts/Communications	744	50.4%	732	49.6%	1,476
Liberal Arts & General Studies	11,013	67.3%	5,357	32.7%	16,370
Science/Engineering/Technology	490	17.8%	2,270	82.2%	2,760
Social & Public Services	3,035	67.7%	1,448	32.3%	4,483
Social Sciences	229	83.9%	44	16.1%	273
Total	21,454	62.1%	13,111	37.9%	34,565

Fall 2006 Credit Enrollment in Certificate Programs

Program Area	Female	%	Male	%	Total
Business	294	70.0%	126	30.0%	420
Education	15	78.9%	4	21.1%	19
ESL	86	73.5%	31	26.5%	117
Health/Life Sciences	1,011	84.4%	187	15.6%	1,198
Humanities/Arts/Communications	47	49.0%	49	51.0%	96
Liberal Arts & General Studies	30	88.2%	4	11.8%	34
Science/Engineering/Technology	56	23.3%	184	76.7%	240
Social & Public Services	402	70.3%	170	29.7%	572
Social Sciences	74	82.2%	16	17.8%	90
Total	2,015	72.3%	771	27.7%	2,786

Fall 2006 Credit Enrollment in Associate Degree and Certificate Programs

Program Area	Female	%	Male	%	Total
Business	3,601	55.9%	2,845	44.1%	6,446
Education	69	70.4%	29	29.6%	98
ESL	86	73.5%	31	26.5%	117
Health/Life Sciences	3,593	83.6%	703	16.4%	4,296
Humanities/Arts/Communications	791	50.3%	781	49.7%	1,572
Liberal Arts & General Studies	11,043	67.3%	5,361	32.7%	16,404
Science/Engineering/Technology	546	18.2%	2,454	81.8%	3,000
Social & Public Services	3,437	68.0%	1,618	32.0%	5,055
Social Sciences	303	83.5%	60	16.5%	363
Non-Matriculated	5,572	61.0%	3,566	39.0%	9,138
Total	29,041	62.5%	17,448	37.5%	46,489

CONNECTICUT COMMUNITY COLLEGES
CREDIT ENROLLMENT BY PROGRAM AREA & ETHNICITY
FALL 2006

Fall 2006 Credit Enrollment in Associate Degree Programs

Program Area	Non-Res.	%	Black	%	Amer.Ind.	%	Asian	%	Hispanic	%	White	%	Unk	%	Total
Business	146	2.4%	1,076	17.9%	17	0.3%	259	4.3%	918	15.2%	3,306	54.9%	304	5.0%	6,026
Education		0.0%	12	15.2%	1	1.3%	3	3.8%	12	15.2%	49	62.0%	2	2.5%	79
Health/Life Sciences	42	1.4%	587	18.9%	15	0.5%	90	2.9%	372	12.0%	1,873	60.5%	119	3.8%	3,098
Humanities/Arts/Communications	15	1.0%	121	8.2%	7	0.5%	41	2.8%	173	11.7%	1,033	70.0%	86	5.8%	1,476
Liberal Arts & General Studies	149	0.9%	2,795	17.1%	59	0.4%	553	3.4%	2,366	14.5%	9,529	58.2%	919	5.6%	16,370
Science/Engineering/Technology	50	1.8%	335	12.1%	7	0.3%	116	4.2%	351	12.7%	1,730	62.7%	171	6.2%	2,760
Social & Public Services	29	0.6%	772	17.2%	11	0.2%	57	1.3%	774	17.3%	2,628	58.6%	212	4.7%	4,483
Social Sciences	3	1.1%	29	10.6%		0.0%	2	0.7%	41	15.0%	185	67.8%	13	4.8%	273
Total	434	1.3%	5,727	16.6%	117	0.3%	1,121	3.2%	5,007	14.5%	20,333	58.8%	1,826	5.3%	34,565

Fall 2006 Credit Enrollment in Certificate Programs

Program Area	Non-Res.	%	Black	%	Amer.Ind.	%	Asian	%	Hispanic	%	White	%	Unk	%	Total
Business	1	0.2%	56	13.3%	4	1.0%	18	4.3%	57	13.6%	254	60.5%	30	7.1%	420
Education		0.0%	1	5.3%		0.0%	1	5.3%	1	5.3%	15	78.9%	1	5.3%	19
ESL	11	9.4%	2	1.7%		0.0%	5	4.3%	39	33.3%	52	44.4%	8	6.8%	117
Health/Life Sciences	10	0.8%	278	23.2%	4	0.3%	33	2.8%	143	11.9%	677	56.5%	53	4.4%	1,198
Humanities/Arts/Communications	2	2.1%	6	6.3%		0.0%		0.0%	15	15.6%	65	67.7%	8	8.3%	96
Liberal Arts & General Studies		0.0%		0.0%		0.0%	2	5.9%	3	8.8%	26	76.5%	3	8.8%	34
Science/Engineering/Technology	1	0.4%	28	11.7%	1	0.4%	7	2.9%	32	13.3%	150	62.5%	21	8.8%	240
Social & Public Services	7	1.2%	114	19.9%	1	0.2%	9	1.6%	83	14.5%	332	58.0%	26	4.5%	572
Social Sciences	1	1.1%	3	3.3%		0.0%	5	5.6%	10	11.1%	61	67.8%	10	11.1%	90
Total	33	1.2%	488	17.5%	10	0.4%	80	2.9%	383	13.7%	1,632	58.6%	160	5.7%	2,786

Fall 2006 Credit Enrollment in Associate Degree and Certificate Programs

Program Area	Non-Res.	%	Black	%	Amer.Ind.	%	Asian	%	Hispanic	%	White	%	Unk	%	Total
Business	147	2.3%	1,132	17.6%	21	0.3%	277	4.3%	975	15.1%	3,560	55.2%	334	5.2%	6,446
Education		0.0%	13	13.3%	1	1.0%	4	4.1%	13	13.3%	64	65.3%	3	3.1%	98
ESL	11	9.4%	2	1.7%		0.0%	5	4.3%	39	33.3%	52	44.4%	8	6.8%	117
Health/Life Sciences	52	1.2%	865	20.1%	19	0.4%	123	2.9%	515	12.0%	2,550	59.4%	172	4.0%	4,296
Humanities/Arts/Communications	17	1.1%	127	8.1%	7	0.4%	41	2.6%	188	12.0%	1,098	69.8%	94	6.0%	1,572
Liberal Arts & General Studies	149	0.9%	2,795	17.0%	59	0.4%	555	3.4%	2,369	14.4%	9,555	58.2%	922	5.6%	16,404
Science/Engineering/Technology	51	1.7%	363	12.1%	8	0.3%	123	4.1%	383	12.8%	1,880	62.7%	192	6.4%	3,000
Social & Public Services	36	0.7%	886	17.5%	12	0.2%	66	1.3%	857	17.0%	2,960	58.6%	238	4.7%	5,055
Social Sciences	4	1.1%	32	8.8%		0.0%	7	1.9%	51	14.0%	246	67.8%	23	6.3%	363
Non-Matriculated	73	0.8%	994	10.9%	24	0.3%	303	3.3%	857	9.4%	6,298	68.9%	589	6.4%	9,138
Total	540	1.2%	7,209	15.5%	151	0.3%	1,504	3.2%	6,247	13.4%	28,263	60.8%	2,575	5.5%	46,489

CONNECTICUT COMMUNITY COLLEGES
CREDIT ENROLLMENT BY ASSOCIATE DEGREE PROGRAM AREA
FALL 2006

Program Area	ASCC	CACC	GWCC	HOCC	MACC	MXCC	NVCC	NWCC	NKCC	QVCC	TRCC	TXCC	TOTAL
Business													
Accounting	40	130		159	437	83	150		212	55	138	3	1,407
Business Admin/Management	138	127	385	449	228	145	383	130	489	110	281	427	3,292
Business Information & DP	25	104		89	25	19			25			115	402
Business Office Technology	24	32	86	21	64	24	22		55	28	26	75	457
Hospitality Services Management			14		37		24		52		38		165
Marketing			61		44	26	36		92		43	1	303
Business Total	227	393	546	718	835	297	615	130	925	193	526	621	6,026
Education													
Teacher Asst/Special Education			35		12	31		1					79
Education Total	0	0	35	0	12	31	0	1	0	0	0	0	79
Health/Life Sciences													
Allied Health		139	135	71	130	75	94	92	45	110		69	960
Mental Health/Human Services	42		179	174	123	89	211	38	75	87	92	118	1,228
Nursing		258	131	6			191		164		160		910
Health/Life Sciences Total	42	397	445	251	253	164	496	130	284	197	252	187	3,098
Humanities/Arts/Communications													
Communications		19			115	8	116	42	108				408
Fine Arts/Visual & Performing Arts			82	68	83	72	140	66		99		65	675
Graphic Design				102	167				28			96	393
Humanities/Arts/Comm. Total	0	19	82	170	365	80	256	108	136	99	0	161	1,476
Liberal Arts & General Studies													
General Studies	318	97	1,627	1,840	1,424	743	1,369	255	1,420	347	1,206	951	11,597
Liberal Arts & Sciences	124	1,405	130	280	513	34	638	166	465	383	421	214	4,773
Liberal Arts & General Studies Total	442	1,502	1,757	2,120	1,937	777	2,007	421	1,885	730	1,627	1,165	16,370

CREDIT ENROLLMENT BY ASSOCIATE DEGREE PROGRAM AREA (continued)

Program Area	ASCC	CACC	GWCC	HOCC	MACC	MXCC	NVCC	NWCC	NKCC	QVCC	TRCC	TXCC	TOTAL
Science/Engineering/Technology													
Architectural/Civil Engineering Tech		44							145		25		214
Communications Technologies	29					42		12					83
Electrical/Computer Eng Tech		2	121		32		194	48	71		167		635
Electromech/Biomedical Eng Tech			9										9
Engineering Science	14	4	37	15	115	18	5	5	50	29	25	26	343
Environmental Technologies					14		45				29		88
Industrial Production Technologies	1		12		18		9				9		49
Information Technology		20	112		172				79	75			458
Mechanical Engineering Tech			134								59		193
Mechanics and Repairers			1	1			106			5			113
Precision Production											72		72
Science Technologies		1	41		28	38	64	9			24		205
Technological Studies	69	3	16	16	10	16	104	2	7	8	24	23	298
Science/Engineering/Tech. Total	113	74	483	32	389	114	527	76	352	117	434	49	2,760
Social & Public Services													
Criminal Justice & Corrections	56	78		257	386	104	240	77	163		158	254	1,773
Early Childhood Education	72	174	264	288	158	79	165	46	265	70	189	127	1,897
Fire Technology		39	18				35		20		34		146
Parks, Recreation & Leisure					104			19	54				177
Public Admin/Social Services		174	30		222		33		31				490
Social & Public Services Total	128	465	312	545	870	183	473	142	533	70	381	381	4,483
Social Sciences													
Paralegal/Legal Assistant					106		67		48				221
Social Sciences, Other							49	3					52
Social Sciences Total	0	0	0	0	106	0	116	3	48	0	0	0	273
Grand Total	952	2,850	3,660	3,836	4,767	1,646	4,490	1,011	4,163	1,406	3,220	2,564	34,565

CONNECTICUT COMMUNITY COLLEGES
CREDIT ENROLLMENT BY CERTIFICATE PROGRAM AREA
FALL 2006

Program Area	ASCC	CACC	GWCC	HOCC	MACC	MXCC	NVCC	NWCC	NKCC	QVCC	TRCC	TXCC	TOTAL
Business													
Accounting	6	4		12	15	6	13		14	5	3	25	103
Business Admin/Management	5	3	14		22	4	13	1		7	7	12	88
Business Information & DP	6	3		15	6	5			10			6	51
Business Office Technology		1	21	14	25	7			25	31	3	16	143
Hospitality Services Management			2								4		6
Marketing		1	3		13						4	8	29
Business Total	17	12	40	41	81	22	26	1	49	43	21	67	420
Education													
Teacher Asst/Special Education			3		12	4							19
Education Total	0	0	3	0	12	4	0	0	0	0	0	0	19
ESL													
English as a Second Language				29					64			24	117
ESL Total	0	0	0	29	0	0	0	0	64	0	0	24	117
Health/Life Sciences													
Allied Health		34	751		29	4		101	31	63		24	1,037
Mental Health/Human Services	1	3	50	44	5	8	13	2	10	2	8	14	160
Nursing		1											1
Health/Life Sciences Total	1	38	801	44	34	12	13	103	41	65	8	38	1,198
Humanities/Arts/Communications													
Communications					4		1				1	12	18
Fine Arts/Visual & Performing Arts							14	5		5		3	27
Graphic Design	1			14				1	15		13	7	51
Humanities/Arts/Comm. Total	1	0	0	14	4	0	15	6	15	5	14	22	96
Liberal Arts & General Studies													
Liberal Arts & Sciences										4	30		34
Liberal Arts & General Studies Total	0	0	0	0	0	0	0	0	0	4	30	0	34

CREDIT ENROLLMENT BY CERTIFICATE PROGRAM AREA (continued)

Program Area	ASCC	CACC	GWCC	HOCC	MACC	MXCC	NVCC	NWCC	NKCC	QVCC	TRCC	TXCC	TOTAL
Science/Engineering/Technology													
Communications Technologies						3							3
Electrical/Computer Eng Tech		1					8	2	13		11		35
Environmental Technologies											4		4
Industrial Production Technologies			1				2						3
Information Technology		12	12		21				5	6			56
Mechanical Engineering Tech			18								15		33
Mechanics and Repairers			11				4						15
Precision Production			11				3				12		26
Science Technologies			2		10		25						37
Technological Studies	3		7	2	1		9				1	5	28
Science/Engineering/Tech. Total	3	13	62	2	32	3	51	2	18	6	43	5	240
Social & Public Services													
Criminal Justice & Corrections				28	27		18				8		81
Early Childhood Education	12	15	38	43		11	22		93	5	13	18	270
Parks, Recreation & Leisure				1			1	10	10				22
Public Admin/Social Services		16	23		84		9		52		15		199
Social & Public Services Total	12	31	61	72	111	11	50	10	155	5	36	18	572
Social Sciences													
Paralegal/Legal Assistant					27		20		28				75
Social Sciences, Other									15				15
Social Sciences Total	0	0	0	0	27	0	20	0	43	0	0	0	90
Grand Total	34	94	967	202	301	52	175	122	385	128	152	174	2,786

CONNECTICUT COMMUNITY COLLEGES
CREDIT ENROLLMENT BY ASSOCIATE DEGREE & CERTIFICATE PROGRAM AREA
FALL 2006

Program Area	ASCC	CACC	GWCC	HOCC	MACC	MXCC	NVCC	NWCC	NKCC	QVCC	TRCC	TXCC	TOTAL
Business													
Accounting	46	134		171	452	89	163		226	60	141	28	1,510
Business Admin/Management	143	130	399	449	250	149	396	131	489	117	288	439	3,380
Business Information & DP	31	107		104	31	24			35			121	453
Business Office Technology	24	33	107	35	89	31	22		80	59	29	91	600
Hospitality Services Management			16		37		24		52		42		171
Marketing		1	64		57	26	36		92		47	9	332
Business Total	244	405	586	759	916	319	641	131	974	236	547	688	6,446
Education													
Teacher Asst/Special Education			38		24	35		1					98
Education Total	0	0	38	0	24	35	0	1	0	0	0	0	98
ESL													
English as a Second Language				29					64			24	117
ESL Total	0	0	0	29	0	0	0	0	64	0	0	24	117
Health/Life Sciences													
Allied Health		173	886	71	159	79	94	193	76	173		93	1,997
Mental Health/Human Services	43	3	229	218	128	97	224	40	85	89	100	132	1,388
Nursing		259	131	6			191		164		160		911
Health/Life Sciences Total	43	435	1,246	295	287	176	509	233	325	262	260	225	4,296
Humanities/Arts/Communications													
Communications		19			119	8	117	42	108		1	12	426
Fine Arts/Visual & Performing Arts			82	68	83	72	154	71		104		68	702
Graphic Design	1			116	167			1	43		13	103	444
Humanities/Arts/Comm. Total	1	19	82	184	369	80	271	114	151	104	14	183	1,572
Liberal Arts & General Studies													
General Studies	318	97	1,627	1,840	1,424	743	1,369	255	1,420	347	1,206	951	11,597
Liberal Arts & Sciences	124	1,405	130	280	513	34	638	166	465	387	451	214	4,807
Liberal Arts & General Studies Total	442	1,502	1,757	2,120	1,937	777	2,007	421	1,885	734	1,657	1,165	16,404

CREDIT ENROLLMENT BY ASSOCIATE DEGREE & CERTIFICATE PROGRAM AREA (continued)

Program Area	ASCC	CACC	GWCC	HOCC	MACC	MXCC	NVCC	NWCC	NKCC	QVCC	TRCC	TXCC	TOTAL
Science/Engineering/Technology													
Architectural/Civil Engineering Tech		44							145		25		214
Communications Technologies	29					45		12					86
Electrical/Computer Eng Tech		3	121		32		202	50	84		178		670
Electromech/Biomedical Eng Tech			9										9
Engineering Science	14	4	37	15	115	18	5	5	50	29	25	26	343
Environmental Technologies					14		45				33		92
Industrial Production Technologies	1		13		18		11				9		52
Information Technology		32	124		193				84	81			514
Mechanical Engineering Tech			152								74		226
Mechanics and Repairers			12	1			110			5			128
Precision Production			11				3				84		98
Science Technologies		1	43		38	38	89	9			24		242
Technological Studies	72	3	23	18	11	16	113	2	7	8	25	28	326
Science/Engineering/Tech. Total	116	87	545	34	421	117	578	78	370	123	477	54	3,000
Social & Public Services													
Criminal Justice & Corrections	56	78		285	413	104	258	77	163		166	254	1,854
Early Childhood Education	84	189	302	331	158	90	187	46	358	75	202	145	2,167
Fire Technology		39	18				35		20		34		146
Parks, Recreation & Leisure				1	104		1	29	64				199
Public Admin/Social Services		190	53		306		42		83		15		689
Social & Public Services Total	140	496	373	617	981	194	523	152	688	75	417	399	5,055
Social Sciences													
Paralegal/Legal Assistant					133		87		76				296
Social Sciences, Other							49	3	15				67
Social Sciences Total	0	0	0	0	133	0	136	3	91	0	0	0	363
Non-Degree													
Non-Degree Total	652	606	1,197	393	1,026	776	994	411	1,492	245	421	925	9,138
Grand Total	1,638	3,550	5,824	4,431	6,094	2,474	5,659	1,544	6,040	1,779	3,793	3,663	46,489

